



SBGF-50 50" GLASS FROSTER

UNITS MANUFACTURED PRIOR 10-1-18

INCLUDE 1 YEAR PARTS + LABOR / 5 YEAR COMPRESSOR WARRANTY

UNITS MANUFACTURED AFTER 10-1-18

INCLUDE 2 YEAR PARTS + LABOR / 5 YEAR COMPRESSOR WARRANTY

Dimensions

Exterior Dimensions (WxDxH)	49.5" x 26.75" x 34.25"
Interior Dimensions (WxDxH)	45.5" x 23" x 26.5"
Net Volume (cu. ft.)	
Gross Weight	230lbs
Packaging Dimensions (WxDxH)	56" x 33" x 42"
Electrical Cord Length	
Capacity	13.5 cu. ft.
Capacity 8" Mugs	250
Capacity 10" Steins	240

Construction

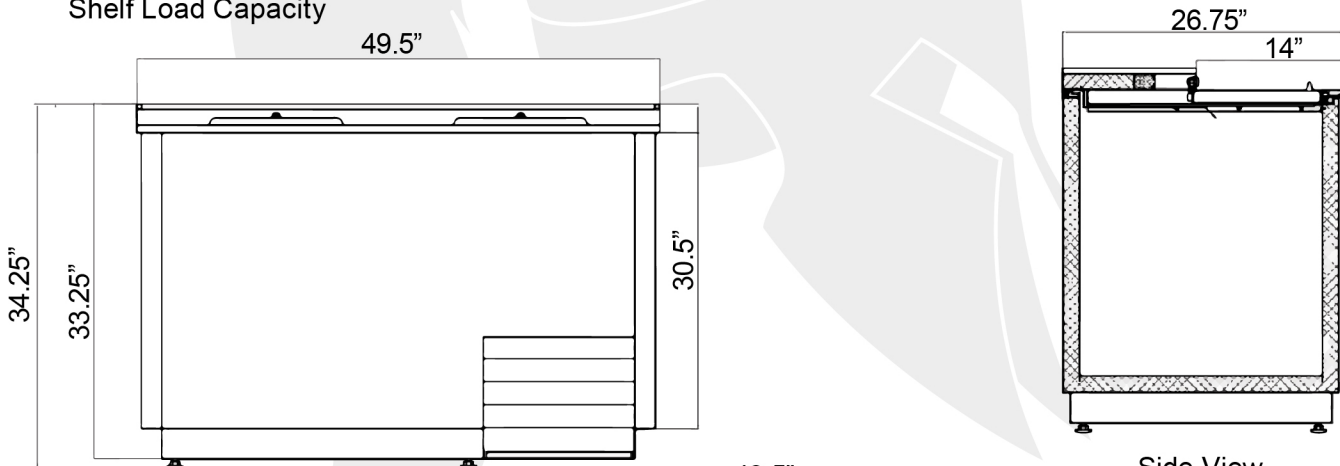
Exterior Material	Stainless Steel Top
Interior Material	Coated Aluminum
Insulation Material	
Shelf Material	Coated Steel
Shelf Load Capacity	49.5"

Cooling

Temperature Range	-5° - 2° F
Refrigerant	R290
Maximum Ambient Temp	90° F
Maximum Humidity	65%
Defrosting	Automatic
Cooling System	
Temperature Display	
Temperature Controller	Electronic
H/P	1/4+

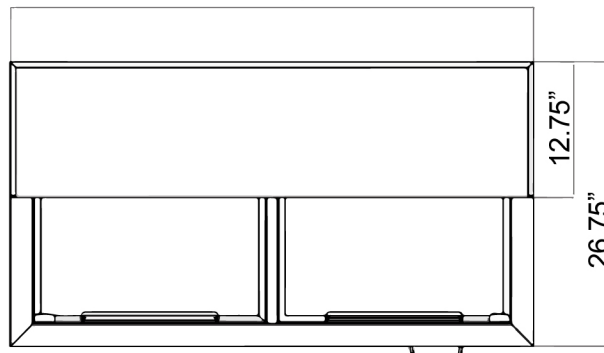
Electrical

Voltage	115/60/1
Amps	3

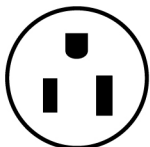


Front View

Side View



Top View



NEMA 5-15P



Intertek
COMPLIES WITH ANSI/NSF 7
FOR FOOD SERVICE