



Refrigerated Sushi Showcases

*Models RS-CN-0043-SC, 0062-SC, 0083-SC, 0103-SC
Items 43223, 43224, 43225, 43116*

Instruction Manual



Revised - 10/30/2019



Toll Free: 1-800-465-0234
Fax: 905-607-0234
Email: service@omcan.com
www.omcan.com

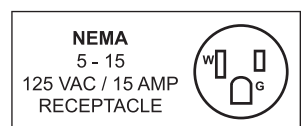


Table of Contents

Model RS-CN-0043-SC / Model RS-CN-0062-SC
Model RS-CN-0083-SC / Model RS-CN-0103-SC

Section	Page
General Information -----	3 - 4
Safety and Warranty -----	4 - 6
Technical Specifications -----	6 - 7
Operation -----	7 - 8
Maintenance -----	8
Troubleshooting -----	9
Parts Breakdown -----	10 - 17
Electrical Schematics -----	18
Warranty Registration -----	19



General Information

Omcan Manufacturing and Distributing Company Inc., Food Machinery of America, Inc. dba Omcan and Omcan Inc. are not responsible for any harm or injury caused due to any person's improper or negligent use of this equipment. The product shall only be operated by someone over the age of 18, of sound mind, and not under the influence of any drugs or alcohol, who has been trained in the correct operation of this machine, and is wearing authorized, proper safety clothing. Any modification to the machine voids any warranty, and may cause harm to individuals using the machine or in the vicinity of the machine while in operation.

CHECK PACKAGE UPON ARRIVAL

Upon receipt of an Omcan shipment please inspect for external damage. If no damage is evident on the external packaging, open carton to ensure all ordered items are within the box, and there is no concealed damage to the machine. If the package has suffered rough handling, bumps or damage (visible or concealed), please note it on the bill of lading before accepting the delivery and contact Omcan within 24 hours, so we may initiate a claim with the carrier. A detailed report on the extent of the damage caused to the machine must be filled out within three days, from the delivery date shown in the shipping documents. Omcan has no recourse for damaged products that were shipped collect or third party.

Before operating any equipment, always read and familiarize yourself with all operation and safety instructions.

Omcan would like to thank you for purchasing this machine. It's of the utmost importance to save these instructions for future reference. Also save the original box and packaging for shipping the equipment if servicing or returning of the machine is required.

Omcan Fabrication et distribution Compagnie Limitée et Food Machinery d'Amérique, dba Omcan et Omcan Inc. ne sont pas responsables de tout dommage ou blessure causé du fait que toute personne ait utilisé cet équipement de façon irrégulière. Le produit ne doit être exploité que par quelqu'un de plus de 18 ans, sain d'esprit, et pas sous l'influence d'une drogue ou d'alcool, qui a été formé pour utiliser cette machine correctement, et est vêtu de vêtements de sécurité appropriés. Toute modification de la machine annule toute garantie, et peut causer un préjudice à des personnes utilisant la machine ou des personnes à proximité de la machine pendant son fonctionnement.

VÉRIFIEZ LE COLIS DÈS RÉCEPTION

Dès réception d'une expédition d'Omcan veuillez inspecter pour dommages externes. Si aucun dommage n'est visible sur l'emballage externe, ouvrez le carton afin de s'assurer que tous les éléments commandés sont dans la boîte, et il n'y a aucun dommage dissimulé à la machine. Si le colis n'a subi aucune mauvaises manipulations, de bosses ou de dommages (visible ou cachée), notez-le sur le bond de livraison avant d'accepter la livraison et contactez Omcan dans les 24 heures qui suivent, pour que nous puissions engager une réclamation auprès du transporteur. Un rapport détaillé sur l'étendue des dommages causés à la machine doit être rempli dans un délai de trois jours, à compter de la date de livraison indiquée dans les documents d'expédition. Omcan n'a aucun droit de recours pour les produits endommagés qui ont été expédiés ou cueilli par un tiers transporteur.

General Information

Avant d'utiliser n'importe quel équipement, toujours lire et vous familiariser avec toutes les opérations et les consignes de sécurité.

Omcan voudrais vous remercier d'avoir choisi cette machine. Il est primordial de conserver ces instructions pour une référence ultérieure. Également conservez la boîte originale et l'emballage pour l'expédition de l'équipement si l'entretien ou le retour de la machine est nécessaire.

Omcan Empresa De Fabricacion Y Distribucion Inc. Y Maquinaria De Alimentos De America, Inc. dba Omcan y Omcan Inc. no son responsables de ningun daño o perjuicio causado por cualquier persona inadecuada o el uso descuidado de este equipo. El producto solo podra ser operado por una persona mayor de 18 años, en su sano juicio y no bajo alguna influencia de droga o alcohol, y que este ha sido entrenado en el correcto funcionamiento de esta máquina, y ésta usando ropa apropiada y autorizada. Cualquier modificación a la máquina anula la garantía y puede causar daños a las personas usando la máquina mientras esta en el funcionamiento.

REVISE EL PAQUETE A SU LLEGADA

Tras la recepcion de un envio Omcan favor inspeccionar daños externos. Si no hay daños evidentes en el empaque exterior, Habra el carton para asegurarse que todos los articulos solicitados estén dentro de la caja y no encuentre daños ocultos en la máquina. Si el paquete ha sufrido un manejo de poco cuidado, golpes o daños (visible o oculto) por favor anote en la factura antes de aceptar la entrega y contacte Omcan dentro de las 24 horas, de modo que podamos iniciar una reclamación con la compañía. Un informe detallado sobre los daños causados a la máquina debe ser llenado en el plazo de tres días, desde la fecha de entrega que se muestra en los documentos de envío. Omcan no tiene ningun recurso por productos dañados que se enviaron a recoger por terceros.

Antes de utilizar cualquier equipo, siempre lea y familiarizarse con todas las instrucciones de funcionamiento y seguridad.

Omcan le gustaría darle las gracias por la compra de esta máquina. Es de la mayor importancia para salvar estas instrucciones para futuras consultas. Además, guarda la caja original y el embalaje para el envío del equipo si servicio técnico o devolución de la máquina que se requiere.

Safety and Warranty

Handle with care	Dry place
Unplug the wall socket first. Never tilt it over 45 degrees when handling.	Always place the refrigerator in a dry location.



Safety and Warranty

<p>Sufficient space The distance from both sides and back of refrigerator to wall or other substance must be no less than 10 cm (4"). The refrigeration capability may decrease if its surrounding space is too small to circulate air.</p>	<p>Well ventilated Always place the refrigerator in an area with proper ventilation. When using for the first time, wait at least 2 hours after handling to start.</p>
<p>Far from heat source Never place the refrigerator under direct sunlight. Never place refrigerator near heat source, as it reduces refrigeration capabilities.</p>	<p>Heavy load Never put any heavy objects on top of the refrigerator.</p>
<p>Do not make holes Never make any holes on the refrigerator. Do not attach any objects onto the refrigerator.</p>	<p>Stable Location Unpack and place the refrigerator on level and stable ground.</p>
<p>Exclusive power socket Normally, the power supply should be 110V, 60 Hz single phase AC with exclusive single phase receptacle.</p>	<p>Do not share the socket Never let the refrigerator share a socket with another appliance. The cable may become hot and this may cause a fire.</p> <p>DO NOT USE EXTENSION CORDS.</p>
<p>Protect cables Never break or damage the cables as this may cause current leakage resulting in a fire.</p>	<p>No water flushing Never spray down refrigerator with pressurized water supply.</p>
<p>Avoid flammable and explosive objects Never put any flammable or explosive items inside the refrigerator such as gasoline or alcohol. Never put any dangerous products in close proximity to the refrigerator.</p>	<p>No spray Do not spray the unit with a flammable substance such as paint. This may result in a fire.</p>
<p>After power break After power break or unplugging the refrigerator, always wait at least 4 minutes before starting the refrigerator again.</p>	<p>Medical Storage No medicine is allowed to be kept inside the refrigerator.</p>

WARNING: THE SUSHI MUST BE KEPT AT 5°C / 41°F OR LOWER DURING TRANSPORTATION, STORAGE AND DISPLAY. FAILURE TO DO SO CAN RESULT IN THE GROWTH OF FOOD BORNE ILLNESS'.

1 YEAR PARTS AND LABOUR WARRANTY

Within the warranty period, contact Omcan Inc. at 1-800-465-0234 to schedule an Omcan authorized service technician to repair the equipment locally.

Unauthorized maintenance will void the warranty. Warranty covers electrical and part failures, not improper use.

Safety and Warranty

Please see <https://omcan.com/disclaimer> for complete info.

WARNING:

The packaging components are classified as normal solid urban waste and can therefore be disposed of without difficulty.

In any case, for suitable recycling, we suggest disposing of the products separately (differentiated waste) according to the current norms.

DO NOT DISCARD ANY PACKAGING MATERIALS IN THE ENVIRONMENT!

WARNING: The unit uses R134a refrigerant. Make sure that all precautions against fire have been taken.

MEANING OF CROSSED OUT WHEELED DUSTBIN

Do not dispose of electrical appliances as unsorted municipal waste, use separate collection facility. Contact your local government for information regarding the collection systems available.



Technical Specifications

Model	RS-CN-0043-SC	RS-CN-0063-SC	RS-CN-0083-SC	RS-CN-0103-SC
Volume	42 L / 1.48 Cu. Ft.	52 L / 1.84 Cu. Ft.	62 L / 2.19 Cu. Ft.	78 L / 2.75 Cu. Ft.
Power	0.18 kW			
Consumption	1.3648 kW/h	1.6344 kW/h	1.7365 kW/h	1.6814 kW/h
Storage Temperature	0°C - 12°C / 32 °F - 53.6°F			
Electrical	110V / 60 Hz / 1Ph			
Dimensions	44.5" x 17.7" x 13" 1130 x 450 x 330mm	51.5" x 17.7" x 13" 1308 x 450 x 330mm	58.4" x 17.7" x 13" 1483 x 450 x 330mm	69" x 17.7" x 13" 1753 x 450 x 330mm
Weight	72.8 lbs. / 33 kgs.	79.4 lbs. / 36 kgs.	86 lbs. / 39 kgs.	97 lbs. / 44 kgs.
Item Number	43223	43224	43225	43116

NOTE

- The electric circuit diagram and parameters on the product name plate are subject to change without the manufacturer having to change the manual.

Technical Specifications

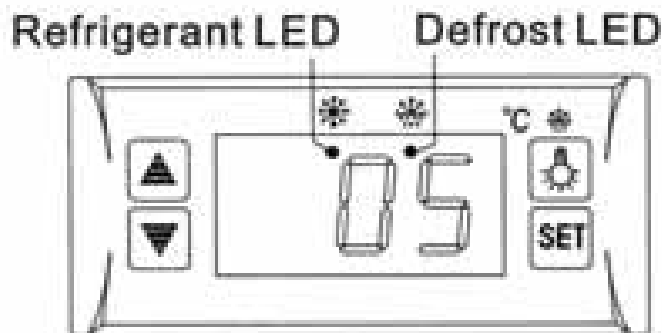
- The design might be improved without notice.
- If the power cord is damaged, it must be replaced by the manufacturer, its service agent or a qualified electrician in order to avoid injury.

Operation

BEFORE USE

Plug the refrigerator in a 110V~ socket exclusively for the unit. After the refrigerator is running, test the air suction to confirm it is sufficiently cold. Then you may put food inside the unit. Make sure the food product is already cooled before placing it in the display case. The unit should not be used to cool food products.



DIGITAL TEMPERATURE CONTROLLER



Features of the Controller:

- It is a mini sized and integrated intelligent controller and applicable to the compressor of one Hp.
- The main functions are: Temperature Display/Temperature Control/Manual, Automatic Defrost by Burning Off/Light Control/Value Storing/Self Testing/Parameter Locking.

Controller Operation:

1. Set Temperature: Press **SET** button, the set temperature is displayed. Press ▲ or ▼ button to modify and store the displayed value. Press **SET** button to exit the adjustment and display the cold-room temperature.
2. If no more button is pressed within 10 seconds, the cold-room temperature will be displayed.
3. Illumination: Press  button, it lights; Press again, it stops. Manual start/stop defrost: Press  button and hold for 6 seconds to defrost or stop defrost.
4. Refrigerant LED: During refrigeration, the LED is on; When the cold room temperature is constant, the LED is off; During the delay start, the LED flashes.
5. Defrost LED: during defrosting, the LED is on; When it stops defrosting, the LED is off, During the delay display of defrost, the LED flashes.

Operation

CAUTION

- Reducing the frequency of opening the refrigerator door will keep more cold air inside the refrigerator.
- Do not block air suction or outlet. Air must continue circulating to increase refrigeration capability.
- Do not over fill or over stock the refrigerator, as it will influence the cooling effect. Adjust the rack height for proper food storage.
- Cool hot food down to room temperature before storing it in the refrigerator.
- Try to reduce open times and keep refrigerator cold and closed, if power is ever off. Only allow a skilled service individual with proper tools to repair damaged power cables. Never touch compressor, as it can result in injury.
- If supply cord is damaged, it must be replaced by the manufacturer, its service agent, or similarly qualified persons in order to avoid a hazard.
- This appliance is not intended for use by persons (including children) with reduced physical, sensory or mental capabilities, or lack of experience and knowledge, unless they have been given supervision or instruction concerning use of the appliance by a person responsible for their safety.
- Children should be supervised to ensure that they do not play with the appliance.

WARNING: Keep ventilation openings, in the appliance enclosure or in the built-in structure, clear of obstruction.

WARNING: Do not use mechanical devices of other means to accelerate the defrosting process, other than those recommended by the manufacturer.

WARNING: Do not damage the refrigerant circuit.

WARNING: Do not use electrical appliances inside the food storage compartments of the appliance, unless they are of the type recommended by the manufacturer.



CAUTION: Risk of fire. The height of the triangle in the symbol shall be at least 15mm.

Maintenance

Keep the refrigerator clean and periodical maintenance is necessary. Always unplug the socket before maintenance. Never use damaged plug or loose socket to prevent from electric shock or short circuit. Never flush the refrigerator. Never use alkali detergent, soap, gasoline, acetone or brush.

1. Clean outside:
Dip soft cloth in neutral detergent (tableware detergent) to clean the outside of the refrigerator and then wipe it with dry soft cloth.
2. Clean inside:
Take rack out for cleaning with water. Use soft cloth to wipe the box.
3. Shut down refrigerator for a long time:
Take all food out and unplug the wall socket. Clean both inside and outside of the refrigerator thoroughly and open the door for sufficient dry. The glass breaks easily. Keep the glass far from children.
4. Replacement of lamp in the light box:
If the LED lamp is damaged, it must be replaced by the manufacturer, or its service agent.

Troubleshooting

Trouble	Cause	Remedy
No refrigeration.	Is the plug in the socket correctly?	Check the plug.
	Is the fuse broken?	Check fuse and replace if needed.
	Is there no power from the socket?	Plug another unit into the socket to check if it works.
Unsatisfactory refrigeration.	Is it in direct sunlight or near a heat source?	Move away from the heat source.
	Is the surrounding area bad for ventilation?	Move to an area with improved ventilation.
	Does the door close correctly? Is the door left open?	Check the door.
	Is the unit too full?	Remove some food.
	Is the temperature controller correct?	Check the controller.
Too much noise.	The fridge is not sitting level.	Move to a flat surface.
	The fridge is vibrating off something else.	Move the unit so it is not touching anything.
	There is a loose part in the refrigerator.	Check the interior for loose items.
Contact Omcan at 1-800-465-0234 for help if simple troubleshooting does not solve the problems.		

The following situations are not problems:

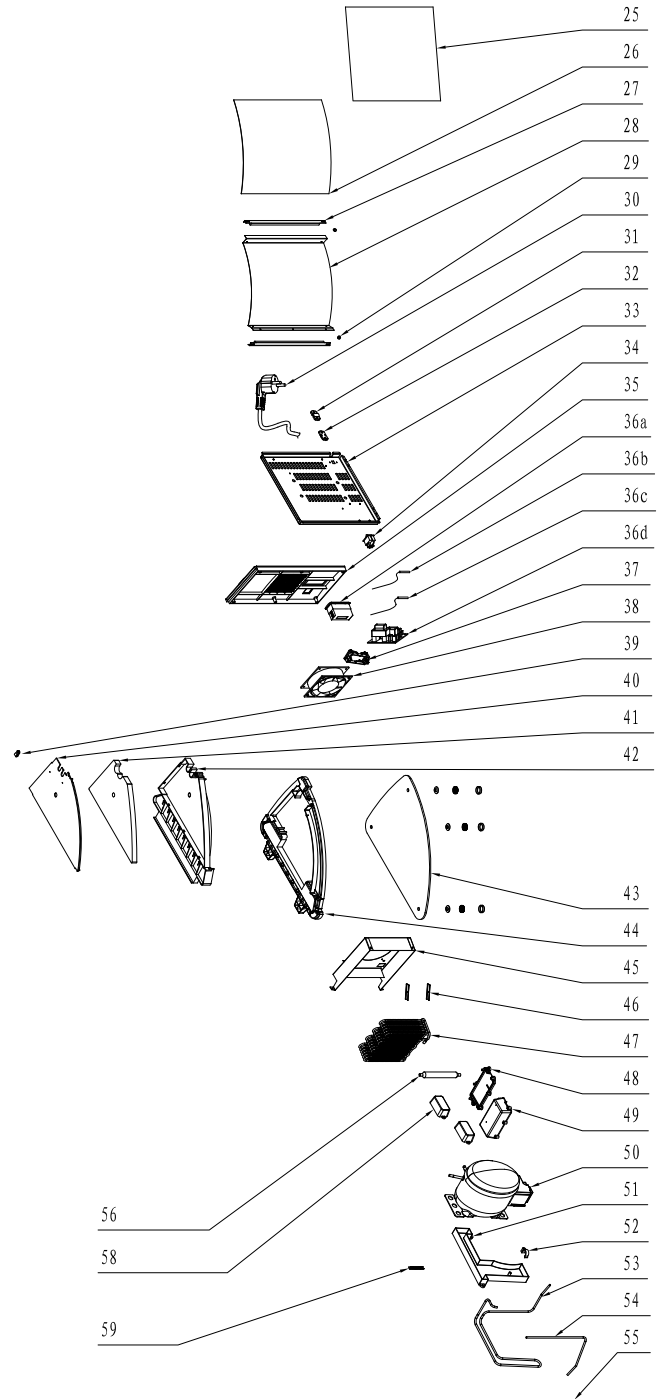
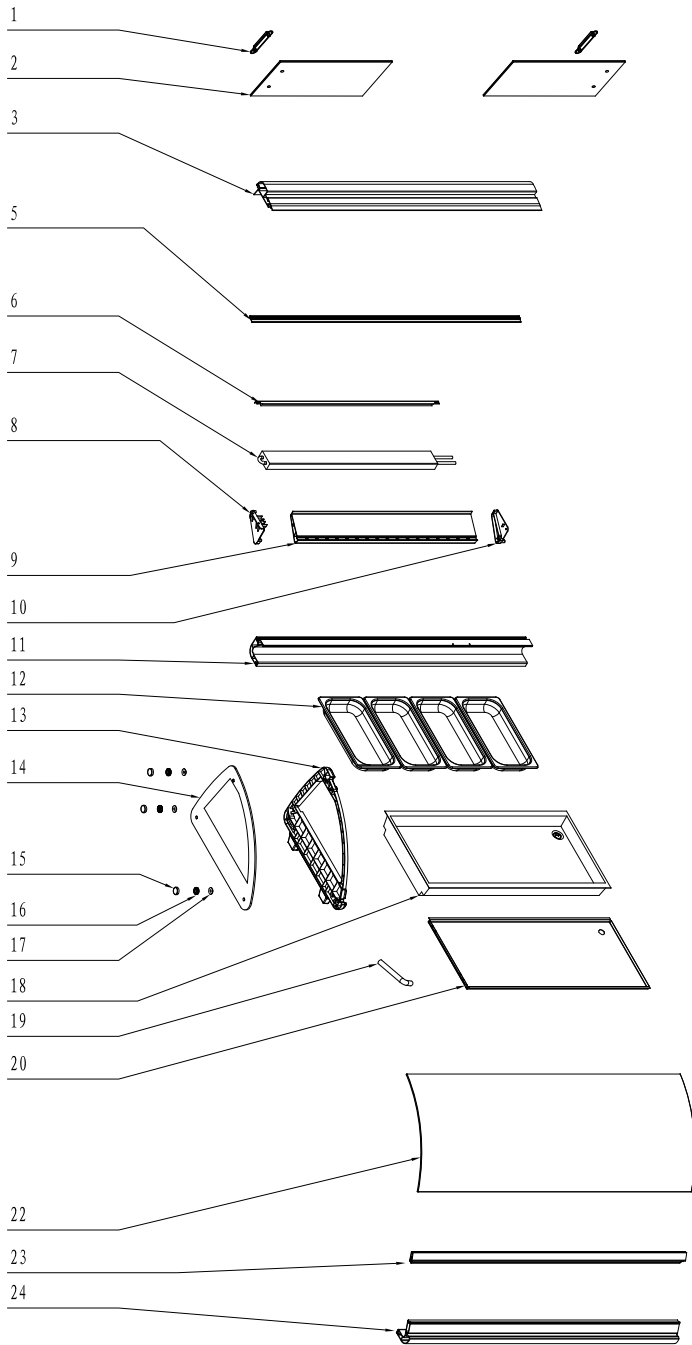
1. The murmur of water is heard when the refrigerator is working. This is normal as the coolant is circulating in the system.
2. Condensation may be found on the outside of the refrigerator. This is not a problem, this is caused by high humidity. Simply use a cloth to wipe it.

REFERENCE

Item Number	Model Number	Description	Manufacturer Model Number
43223	RS-CN-0043-SC	Refrigerated Showcase Sushi with Curved Glass 42 L / 1.48 cu. ft. 110V/60/1 cQPSus	RTS-43L
43224	RS-CN-0062-SC	Refrigerated Showcase Sushi with Curved Glass 52 L / 1.84 cu. ft. 110V/60/1 cQPSus	RTS-63L
43225	RS-CN-0083-SC	Refrigerated Showcase Sushi with Curved Glass 62 L / 2.19 cu. ft. 110V/60/1 cQPSus	RTS-83L
43116	RS-CN-0103-SC	Refrigerated Showcase Sushi with Curved Glass 78 L / 2.75 cu. ft. 110V/60/1 cQPSus	RTS-103L

Parts Breakdown

Model RS-CN-0043-SC 43223



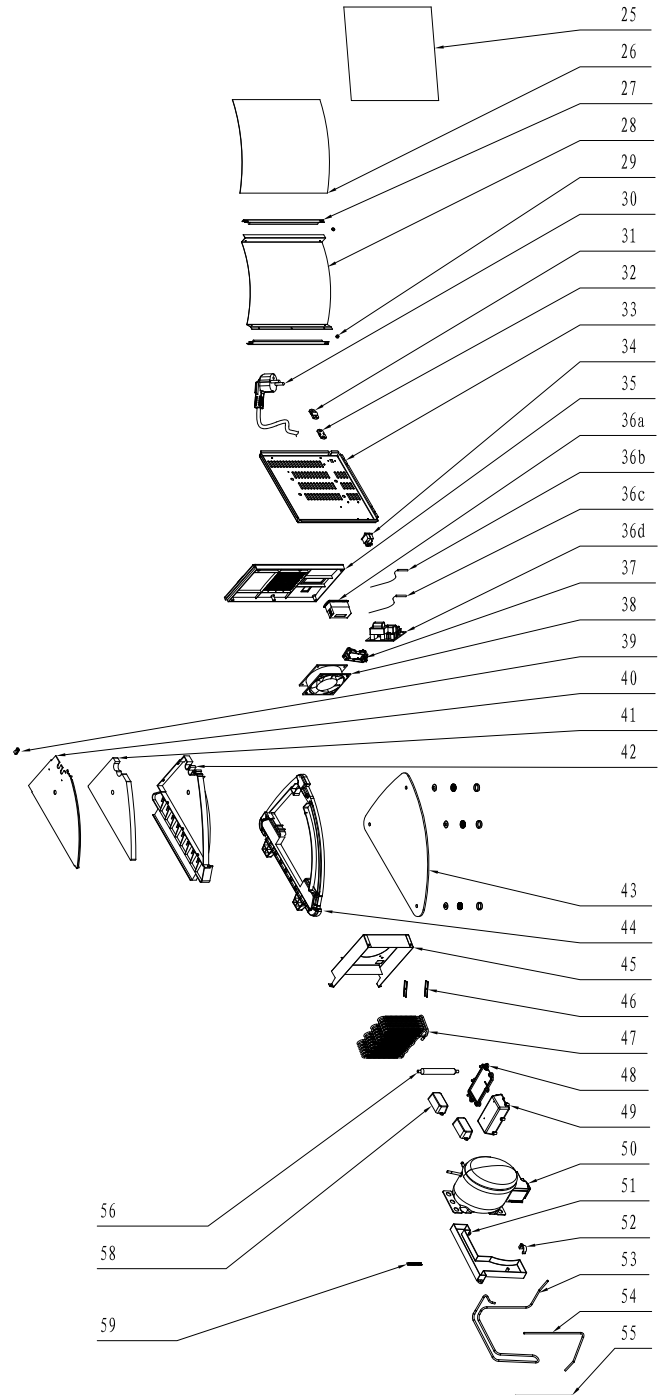
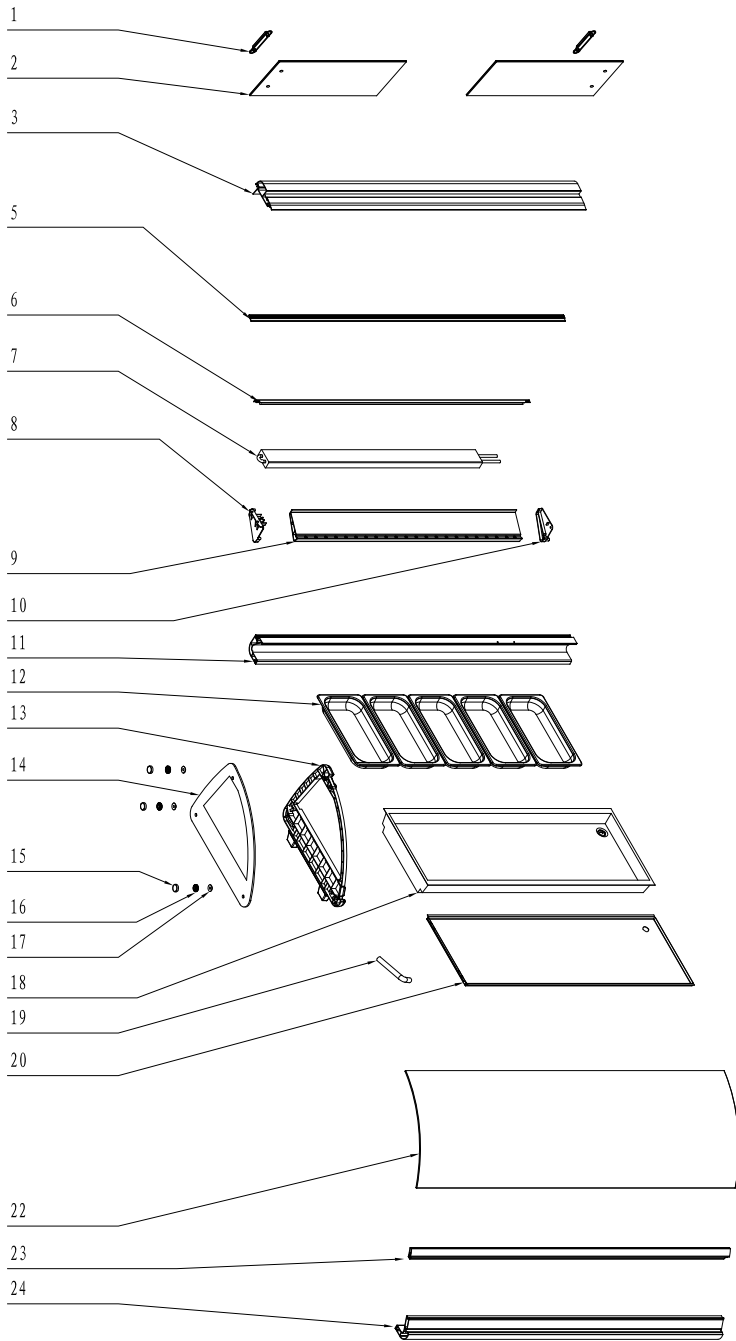
Parts Breakdown

Model RS-CN-0043-SC 43223

Item No.	Description	Position	Item No.	Description	Position	Item No.	Description	Position
60088	Handle for RTS-43L	1	60107	Front Glass for RTS-43L	22	60129	Middle Separator Foam for RTS-43L	41
60089	Door Glass for RTS-43L	2	60108	Lower Strip for Curved Glass for RTS-43L	23	60130	Middle Separator for RTS-43L	42
60090	Upper Pillar for RTS-43L	3	60109	Front Pillar for RTS-43L	24	60131	Right Glass for RTS-43L	43
60091	Damping Strip for Curved Glass for RTS-43L	5	60110	Advertising Paper for RTS-43L	25	60132	Right Plastic Panel for RTS-43L	44
60092	LED Light for RTS-43L	6	60111	PP Board for RTS-43L	26	60133	Guard Plate of Condenser for RTS-43L	45
60093	Top Evaporator for RTS-43L	7	60112	LED Light for RTS-43L	27	60134	Square Gasket for RTS-43L	46
60094	Left Fixer for Upper Water Receiver for RTS-43L	8	60113	Cover of Compressor for RTS-43L	28	60135	Condenser for RTS-43L	47
60095	Pillar for Upper Water Receiver for RTS-43L	9	60114	5mm Protective Ring for RTS-43L	29	60136	Controller Panel for RTS-43L	48
60096	Right Fixer for Upper Water Receiver for RTS-43L	10	60115	Power Cord for RTS-43L	30	60137	Controller Box for RTS-43L	49
60097	Rear Pillar for RTS-43L	11	61245	Wire Clip Cover for RTS-43L	31	60138	Compressor for RTS-43L	50
60098	1/3 GN Pan for RTS-43L	12	61246	Wire Clip Holder for RTS-43L	32	60139	Water Receiver for RTS-43L	51
60099	Left Plastic Panel for RTS-43L	13	60118	Bottom Panel of Compressor for RTS-43L	33	60140	Hook for Insulation Pipe for RTS-43L	52
60100	Left Glass for RTS-43L	14	60119	Switch for RTS-43L	34	60141	Joint Pipe-1 for RTS-43L	53
60101	Decorating Gasket of Nut for RTS-43L	15	60120	Rear Cover for RTS-43L	35	60142	Joint Pipe-11 for RTS-43L	54
60102	Nut Decorating Parts for RTS-43L	16	60121	Complete Temperature Display for RTS-43L	36A-D	60143	Filling Pipe for RTS-43L	55
60103	Big Gasket of Nut for RTS-43L	17	60125	Digital Controller Holder for RTS-43L	37	60144	Dry Filter for RTS-43L	56
60104	Foam Material for RTS-43L	18	60126	Fan Motor for RTS-43L	38	60145	#6 Driver for RTS-43L	58
60105	Water Discharge Pipe for RTS-43L	19	60127	Plastic Cable Clip for RTS-43L	39	60146	Spring for RTS-43L	59
60106	Bottom Panel for RTS-43L	20	60128	Cover of Middle Separator for RTS-43L	40			

Parts Breakdown

Model RS-CN-0062-SC 43224



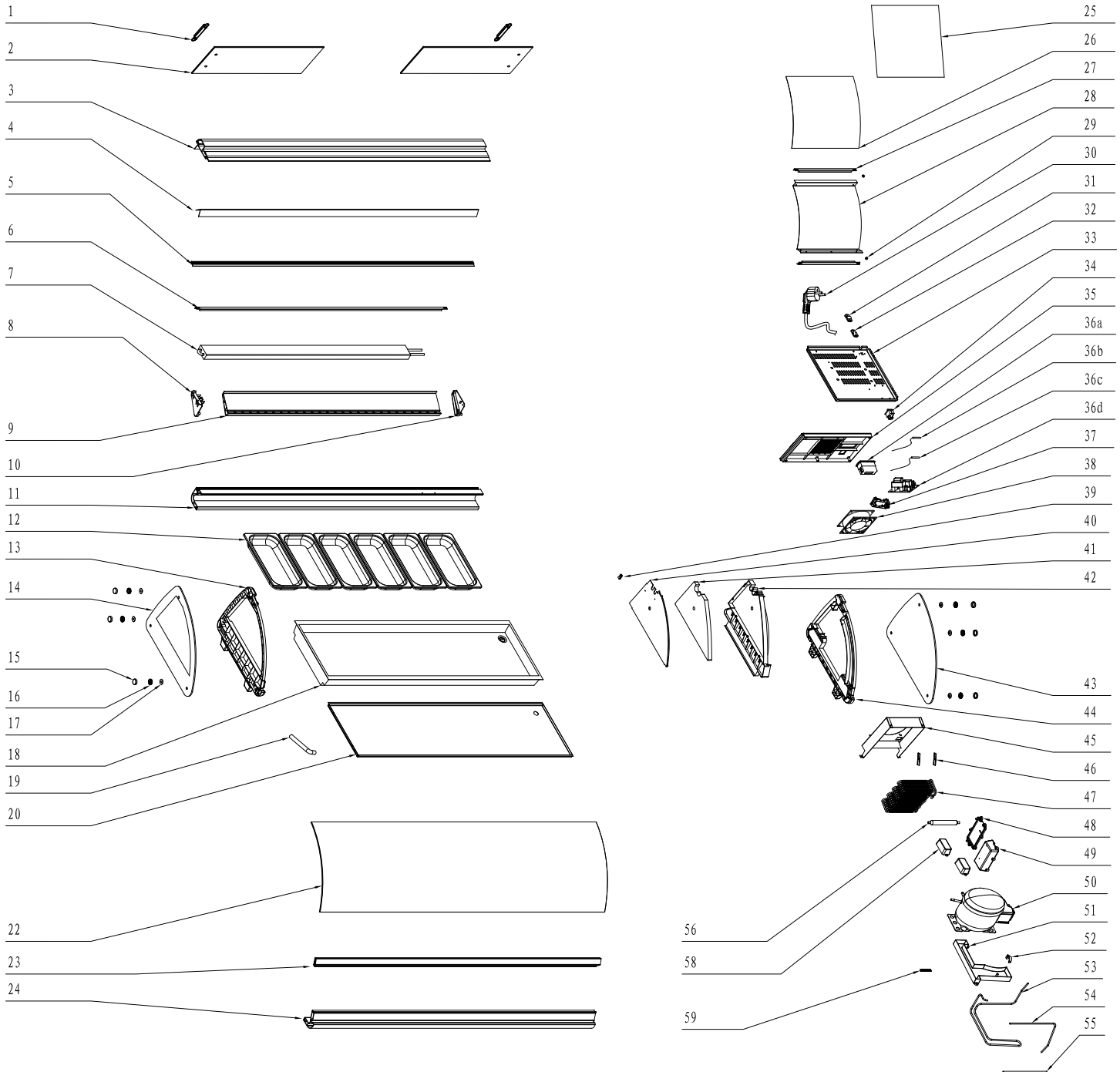
Parts Breakdown

Model RS-CN-0062-SC 43224

Item No.	Description	Position	Item No.	Description	Position	Item No.	Description	Position
60088	Handle for RTS-63L	1	60155	Front Glass for RTS-63L	22	60129	Middle Separator Foam for RTS-63L	41
60147	Door Glass for RTS-63L	2	60156	Lower Strip for Curved Glass for RTS-63L	23	60130	Middle Separator for RTS-63L	42
60148	Upper Pillar for RTS-63L	3	60157	Front Pillar for RTS-63L	24	60131	Right Glass for RTS-63L	43
60149	Damping Strip for Curved Glass for RTS-63L	5	60110	Advertising Paper for RTS-63L	25	60132	Right Plastic Panel for RTS-63L	44
60092	LED Light for RTS-63L	6	60111	PP Board for RTS-63L	26	60133	Guard Plate of Condenser for RTS-63L	45
67379	Top Evaporator for RTS-63L	7	60112	LED Light for RTS-63L	27	60134	Square Gasket for RTS-63L	46
60094	Left Fixer for Upper Water Receiver for RTS-63L	8	60113	Cover of Compressor for RTS-63L	28	60135	Condenser for RTS-63L	47
60151	Pillar for Upper Water Receiver for RTS-63L	9	60114	5mm Protective Ring for RTS-63L	29	60136	Controller Panel for RTS-63L	48
60096	Right Fixer for Upper Water Receiver for RTS-63L	10	60115	Power Cord for RTS-63L	30	60137	Controller Box for RTS-63L	49
60152	Rear Pillar for RTS-63L	11	61245	Wire Clip Cover for RTS-63L	31	60138	Compressor for RTS-63L	50
60098	1/3 GN Pan for RTS-63L	12	61246	Wire Clip Holder for RTS-63L	32	60139	Water Receiver for RTS-63L	51
60099	Left Plastic Panel for RTS-63L	13	60118	Bottom Panel of Compressor for RTS-63L	33	60140	Hook for Insulation Pipe for RTS-63L	52
60100	Left Glass for RTS-63L	14	60119	Switch for RTS-63L	34	60141	Joint Pipe-1 for RTS-63L	53
60101	Decorating Gasket of Nut for RTS-63L	15	60120	Rear Cover for RTS-63L	35	60142	Joint Pipe-11 for RTS-63L	54
60102	Nut Decorating Parts for RTS-63L	16	60121	Complete Temperature Display for RTS-63L	36A-D	60143	Filling Pipe for RTS-63L	55
60103	Big Gasket of Nut for RTS-63L	17	60125	Digital Controller Holder for RTS-63L	37	60144	Dry Filter for RTS-63L	56
60153	Foam Material for RTS-63L	18	60126	Fan Motor for RTS-63L	38	60145	#6 Driver for RTS-63L	58
60105	Water Discharge Pipe for RTS-63L	19	60127	Plastic Cable Clip for RTS-63L	39	60146	Spring for RTS-63L	59
60154	Bottom Panel for RTS-63L	20	60128	Cover of Middle Separator for RTS-63L	40			

Parts Breakdown

Model RS-CN-0083-SC 43225



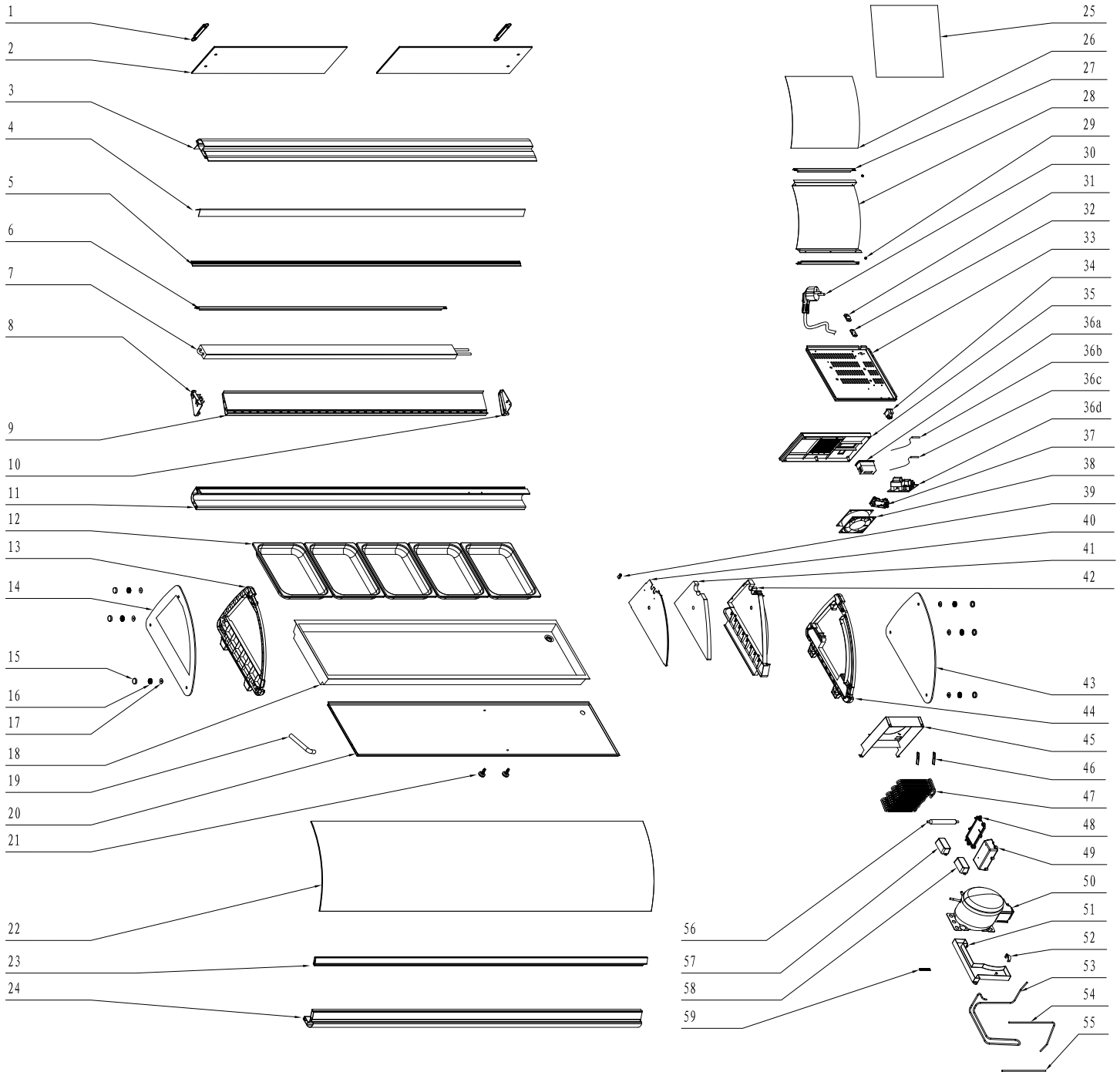
Parts Breakdown

Model RS-CN-0083-SC 43225

Item No.	Description	Position	Item No.	Description	Position	Item No.	Description	Position
60088	Handle for RTS-83L	1	60167	Bottom Panel for RTS-83L	20	60128	Cover of Middle Separator for RTS-83L	40
60158	Door Glass for RTS-83L	2	60168	Front Glass for RTS-83L	22	60129	Middle Separator Foam for RTS-83L	41
60159	Upper Pillar for RTS-83L	3	60169	Lower Strip for Curved Glass for RTS-83L	23	60130	Middle Separator for RTS-83L	42
60160	Supporting Plate of Upper Pillar for RTS-83L	4	60170	Front Pillar for RTS-83L	24	60131	Right Glass for RTS-83L	43
60161	Damping Strip for Curved Glass for RTS-83L	5	60110	Advertising Paper for RTS-83L	25	60132	Right Plastic Panel for RTS-83L	44
60162	LED Light for RTS-83L	6	60111	PP Board for RTS-83L	26	60133	Guard Plate of Condenser for RTS-83L	45
60163	Top Evaporator for RTS-83L	7	60112	LED Light for RTS-83L	27	60134	Square Gasket for RTS-83L	46
60094	Left Fixer for Upper Water Receiver for RTS-83L	8	60113	Cover of Compressor for RTS-83L	28	60135	Condenser for RTS-83L	47
60164	Pillar for Upper Water Receiver for RTS-83L	9	60114	5mm Protective Ring for RTS-83L	29	60136	Controller Panel for RTS-83L	48
60096	Right Fixer for Upper Water Receiver for RTS-83L	10	60115	Power Cord for RTS-83L	30	60137	Controller Box for RTS-83L	49
60165	Rear Pillar for RTS-83L	11	61245	Wire Clip Cover for RTS-83L	31	60138	Compressor for RTS-83L	50
60098	1/3 GN Pan for RTS-83L	12	61246	Wire Clip Holder for RTS-83L	32	60139	Water Receiver for RTS-83L	51
60099	Left Plastic Panel for RTS-83L	13	60118	Bottom Panel of Compressor for RTS-83L	33	60140	Hook for Insulation Pipe for RTS-83L	52
60100	Left Glass for RTS-83L	14	60119	Switch for RTS-83L	34	60141	Joint Pipe-1 for RTS-83L	53
60101	Decorating Gasket of Nut for RTS-83L	15	60120	Rear Cover for RTS-83L	35	60142	Joint Pipe-11 for RTS-83L	54
60102	Nut Decorating Parts for RTS-83L	16	60121	Complete Temperature Display for RTS-83L	36A-D	60143	Filling Pipe for RTS-83L	55
60103	Big Gasket of Nut for RTS-83L	17	60125	Digital Controller Holder for RTS-83L	37	60144	Dry Filter for RTS-83L	56
60166	Foam Material for RTS-83L	18	60126	Fan Motor for RTS-83L	38	60145	#6 Driver for RTS-83L	58
60105	Water Discharge Pipe for RTS-83L	19	60127	Plastic Cable Clip for RTS-83L	39	60146	Spring for RTS-83L	59

Parts Breakdown

Model RS-CN-0103-SC 43116



Parts Breakdown

Model RS-CN-0103-SC 43116

Item No.	Description	Position	Item No.	Description	Position	Item No.	Description	Position
60088	Handle for RTS-103L	1	60181	Adjustable Feet for RTS-103L	21	60129	Middle Separator Foam for RTS-103L	41
60171	Door Glass for RTS-103L	2	60182	Front Glass for RTS-103L	22	60130	Middle Separator for RTS-103L	42
60172	Upper Pillar for RTS-103L	3	60183	Lower Strip for Curved Glass for RTS-103L	23	60131	Right Glass for RTS-103L	43
60160	Supporting Plate of Upper Pillar for RTS-103L	4	60184	Front Pillar for RTS-103L	24	60132	Right Plastic Panel for RTS-103L	44
60173	Damping Strip for Curved Glass for RTS-103L	5	60110	Advertising Paper for RTS-103L	25	60133	Guard Plate of Condenser for RTS-103L	45
60174	LED Light for RTS-103L	6	60111	PP Board for RTS-103L	26	60134	Square Gasket for RTS-103L	46
60175	Top Evaporator for RTS-103L	7	60112	LED Light for RTS-103L	27	60135	Condenser for RTS-103L	47
60094	Left Fixer for Upper Water Receiver for RTS-103L	8	60113	Cover of Compressor for RTS-103L	28	60136	Controller Panel for RTS-103L	48
60176	Pillar for Upper Water Receiver for RTS-103L	9	60114	5mm Protective Ring for RTS-103L	29	60137	Controller Box for RTS-103L	49
60096	Right Fixer for Upper Water Receiver for RTS-103L	10	60115	Power Cord for RTS-103L	30	60138	Compressor for RTS-103L	50
60177	Rear Pillar for RTS-103L	11	61245	Wire Clip Cover for RTS-103L	31	60139	Water Receiver for RTS-103L	51
60178	1/2 GN Pan for RTS-103L	12	61246	Wire Clip Holder for RTS-103L	32	60140	Hook for Insulation Pipe for RTS-103L	52
60099	Left Plastic Panel for RTS-103L	13	60118	Bottom Panel of Compressor for RTS-103L	33	60141	Joint Pipe-1 for RTS-103L	53
60100	Left Glass for RTS-103L	14	60119	Switch for RTS-103L	34	60142	Joint Pipe-11 for RTS-103L	54
60101	Decorating Gasket of Nut for RTS-103L	15	60120	Rear Cover for RTS-103L	35	60143	Filling Pipe for RTS-103L	55
60102	Nut Decorating Parts for RTS-103L	16	60121	Complete Temperature Display for RTS-103L	36A-D	60144	Dry Filter for RTS-103L	56
60103	Big Gasket of Nut for RTS-103L	17	60125	Digital Controller Holder for RTS-103L	37	60145	#6 Driver for RTS-103L	58
60179	Foam Material For RTS-103L	18	60126	Fan Motor for RTS-103L	38	60146	Spring for RTS-103L	59
60105	Water Discharge Pipe for RTS-103L	19	60127	Plastic Cable Clip for RTS-103L	39			
60180	Bottom Panel for RTS-103L	20	60128	Cover of Middle Separator for RTS-103L	40			

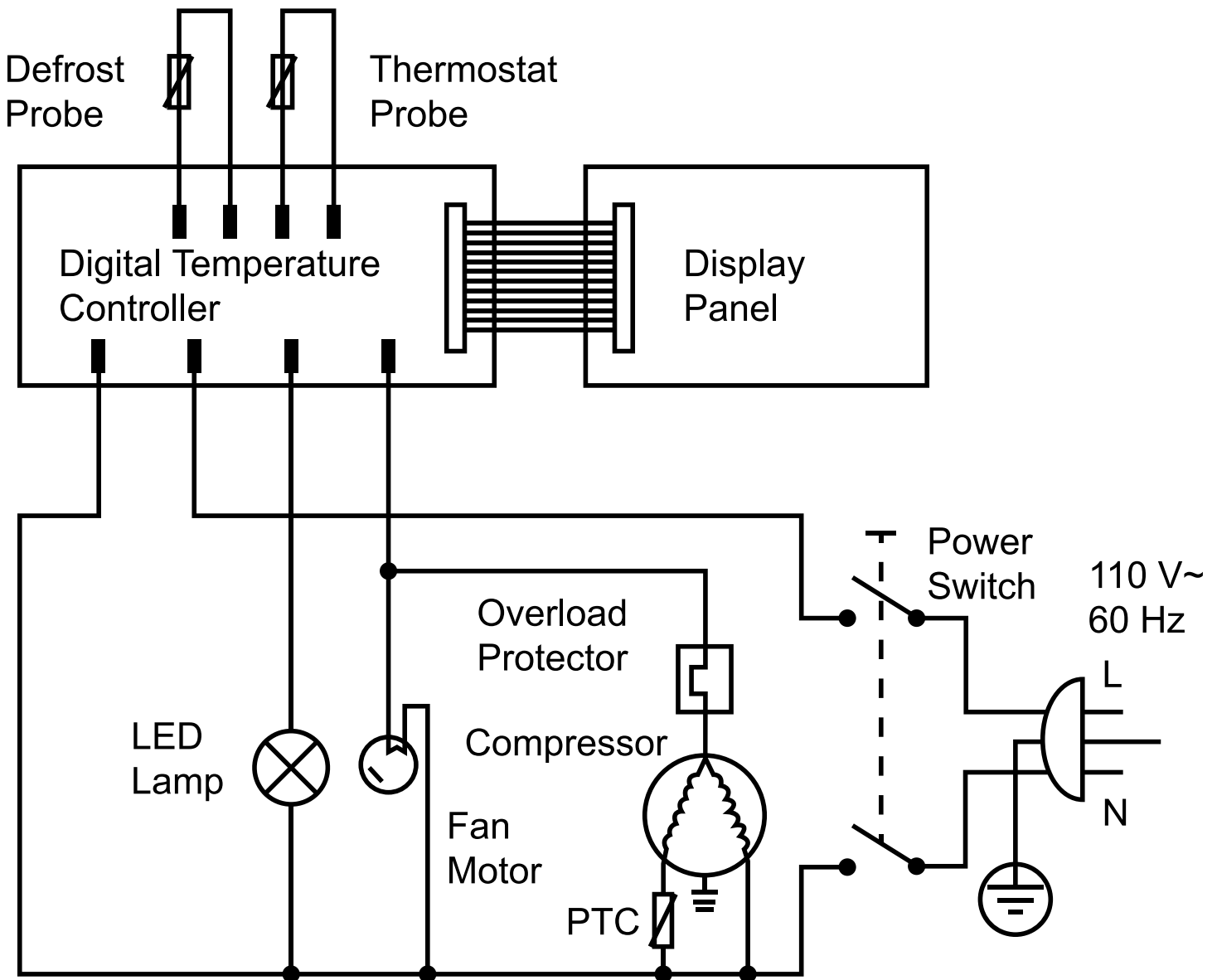
Electrical Schematics

Model RS-CN-0043-SC 43223

Model RS-CN-0062-SC 43224

Model RS-CN-0083-SC 43225

Model RS-CN-0103-SC 43116





Warranty Registration

Thank you for purchasing an Omcan product. To register your warranty for this product, complete the information below, tear off the card at the perforation and then send to the address specified below. You can also register online by visiting:

Merci d'avoir acheté un produit Omcan. Pour enregistrer votre garantie pour ce produit, complétez les informations ci-dessous, détachez la carte au niveau de la perforation, puis l'envoyer à l'adresse spécifiée ci-dessous. Vous pouvez également vous inscrire en ligne en visitant:

Gracias por comprar un producto Omcan usted. Para registrar su garantía para este producto, complete la información a continuación, cortar la tarjeta en la perforación y luego enviarlo a la dirección indicada a continuación. También puede registrarse en línea en:

<https://omcan.com/warranty-registration/>

For mailing in Canada

Pour postale au Canada

Por correo en Canadá

OMCAN

PRODUCT WARRANTY REGISTRATION

3115 Pepper Mill Court,

Mississauga, Ontario

Canada, L5L 4X5

For mailing in the US

Pour diffusion aux États-Unis

Por correo en los EE.UU.

OMCAN

PRODUCT WARRANTY REGISTRATION

4450 Witmer Industrial Estates, Unit 4,

Niagara Falls, New York

USA, 14305

or email to: service@omcan.com



Purchaser's Information

Name: _____

Address: _____

City: _____ Province or State: _____ Postal or Zip: _____

Country: _____

Dealer from which Purchased: _____

Dealer City: _____ Dealer Province or State: _____

Invoice: _____

Model Name: _____ Model Number: _____

Machine Description: _____

Date of Purchase (MM/DD/YYYY): _____

Would you like to extend the warranty? Yes No

Company Name: _____

Telephone: _____

Email Address: _____

Type of Company:

Restaurant Bakery Deli

Butcher Supermarket Caterer

Institution (*specify*): _____

Other (*specify*): _____

Serial Number: _____

Date of Installation (MM/DD/YYYY): _____

Thank you for choosing Omcan | Merci d'avoir choisi Omcan | Gracias por elegir Omcan



Since 1951 Omcan has grown to become a leading distributor of equipment and supplies to the North American food service industry. Our success over these many years can be attributed to our commitment to strengthen and develop new and existing relationships with our valued customers and manufacturers. Today with partners in North America, Europe, Asia and South America, we continually work to improve and grow the company. We strive to offer customers exceptional value through our qualified local sales and service representatives who provide convenient access to over 5,000 globally sourced products.

Depuis 1951 Omcan a grandi pour devenir un des “leaders” de la distribution des équipements et matériel pour l’industrie des services alimentaires en Amérique du Nord. Notre succès au cours de ces nombreuses années peut être attribué à notre engagement à renforcer et à développer de nouvelles et existantes relations avec nos clients et les fabricants de valeur. Aujourd’hui avec des partenaires en Amérique du Nord, Europe, Asie et Amérique du Sud, nous travaillons continuellement à améliorer et développer l’entreprise. Nous nous efforçons d’offrir à nos clients une valeur exceptionnelle grâce à nos ventes locales qualifiées et des représentants de service qui offrent un accès facile à plus de 5000 produits provenant du monde entier.

Desde 1951 Omcan ha crecido hasta convertirse en un líder en la distribución de equipos y suministros de alimentos en América del Norte industria de servicios. Nuestro éxito en estos años se puede atribuir a nuestro compromiso de fortalecer y desarrollar nuevas relaciones existentes con nuestros valiosos clientes y fabricantes. Hoy con socios de América del Norte, Europa, Asia y América del Sur, que trabajan continuamente para mejorar y crecer la empresa. Nos esforzamos por ofrecer a nuestros clientes valor excepcional a través de nuestro local de ventas y representantes de los servicios que proporcionan un fácil acceso a más de 5,000 productos con origen a nivel mundial.

