



Your Solutions Partner

# Specifications

F.O.B. Sedalia, Missouri 65301



**613Q-E4**

*(shown with optional casters)*

### OPTIONS:

- Stainless steel interior
- Stainless steel back enclosure panel
- Seismic feet
- High Voltage (380/415/440/480)
- Casters
- Double stack - shipped assembled
- Porcelain drip tray
- Extra deep oven racks - standard and deep depth
- Prison package—tamper proof screws, lexan hinged cover with lockable clasp
- Extended warranty

DUKE MANUFACTURING CO.

2305 N. Broadway

St. Louis, MO 63102

800.735.3853 Toll Free

314.231.5074 Fax

www.dukemfg.com

SS-1077-613Q -E4 Double Deep-Elec

### Approval Stamp(s):

#### PRODUCT INFORMATION:

PROJECT: \_\_\_\_\_

ITEM: \_\_\_\_\_

QUANTITY: \_\_\_\_\_

MODEL:

#### **Duke Convection Ovens - "Q" Series Double Deck - Deep Depth - Electric**

- **613Q-E4** Double deck, deep depth

#### STANDARD FEATURES

- 6 racks/13 rack positions
- Porcelain interior finish
- 50/50 stainless steel independent doors
- Double pane glass both doors
- 27" angular stainless steel/adjustable leg
- 2 speed motor

#### OVEN SECTION

- Stainless steel front, sides and top
- 1 1/2" insulation on bottom, sides and back
- 3" insulation on top
- Interior lights

#### OVEN CONTROLS

- "V" - Basic snap action thermostat (200°-500°F), 60 minute electric dial timer with continuous sound buzzer, 2-speed fan
- "XX" - Solid state digital time and temperature controls, 12-hour countdown timer, **Cook and Hold** feature, 2-speed fan, Pulse fan capability

#### Certifications



Specification subject to change



DUKE CONVECTION OVENS - "Q" SERIES - DOUBLE - DEEP DEPTH - ELECTRIC

Catalog No. DCO-QELECD

A.I.A. File No. 35-C-13

REV C 09/25/2019

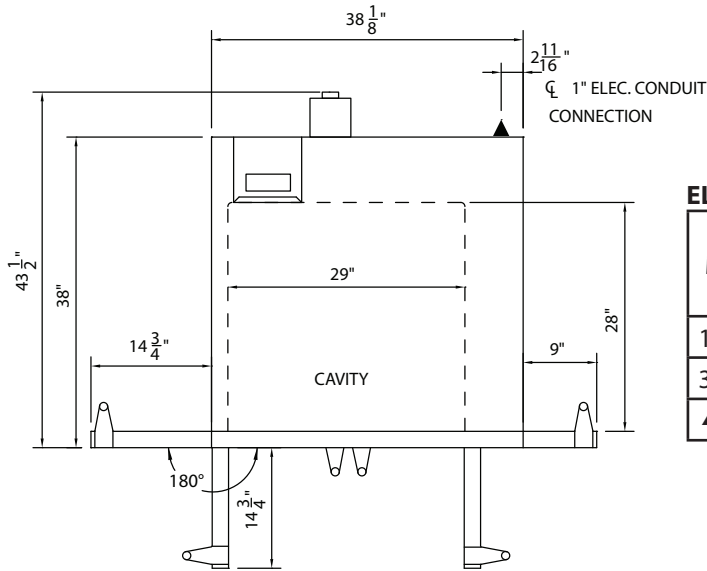
# DUKE CONVECTION OVENS

## "Q" SERIES

DOUBLE DECK - ELECTRIC - DEEP DEPTH

A.I.A. File No. 35-C-13

Catalog No. DCO-QELED

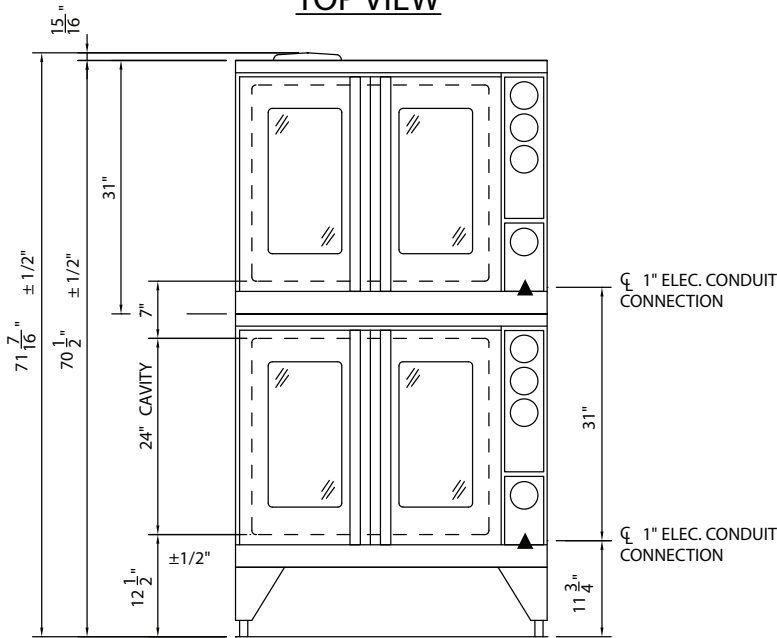


TOP VIEW

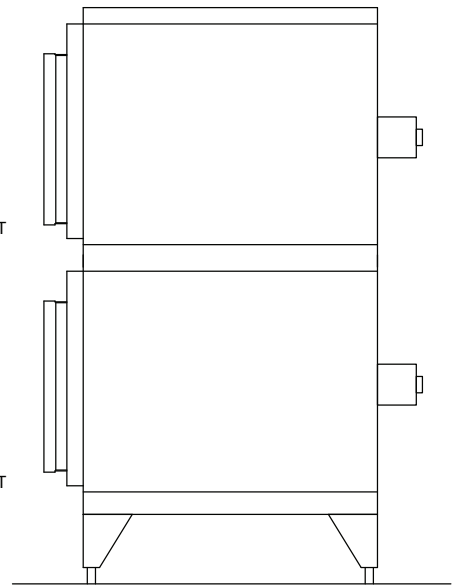
**ELECTRICAL SPECIFICATIONS:**

Model	208 Volt (Amps)	240 Volt (Amps)	480 Volt (Amps)	KW
1 Phase	52.8	45.8	n/a	10.0
3 Phase	30.5	26.5	13.3	10.0

▲ Electronic connection point



FRONT VIEW



RIGHT SIDE VIEW

**DIMENSIONS:**

Freight Class: 85

Model	Height top view		Width		Depth front view		Cube ft. crated	Crated Ship Weight	
	in.	cm	in.	cm	in.	cm		lbs.	kg
613Q-E4	43.5	110.5	38	96.5	70.5	179.1	76.5	1020	464.0

DUKE CONVECTION OVENS - "Q" SERIES - DOUBLE - DEEP DEPTH - ELECTRIC



**Duke Manufacturing Co.**  
2305 N. Broadway  
St. Louis, MO 63102

Phone: 314-231-1130  
Toll Free: 1-800-735-3853  
Fax: 314-231-5074

www.dukemfg.com