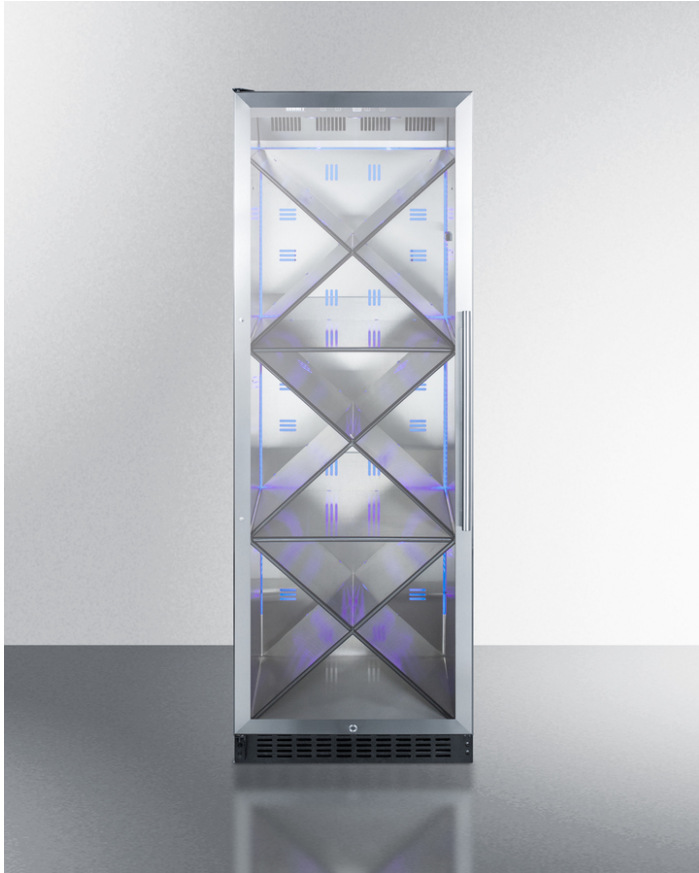


# SCR1401LHX



69.75" x 23.63" x 23.75" (H x W x D)

Full-size commercially listed wine cellar with stainless steel interior, diamond style shelving, digital controls, self-closing glass door, and black cabinet

## Highlights:

Commercially approved to NSF-7 standards

Unique diamond style shelving in stainless steel brings an elevated presentation to commercial wine storage

Digital thermostat offers precise and convenient temperature control with a wide range to accommodate red or white wine

## Product Features:

Commercially approved	Design meets UL-471 commercial standards and is ETL-S listed to NSF-7 standards for commercial use
Slim fit	Just 24" wide and deep for an easy fit in any setting
Diamond style wine racks	Interior features stainless steel shelving in a unique diamond configuration for an elevated presentation
Rubberized safety trim	Each shelf features an industrial rubberized trim in a black finish, ensuring there are no sharp edges while providing a clean look
Stainless steel interior	Walls are constructed from stainless steel for added strength and easy cleanup
Double pane tempered glass door	Heat-safe glass door with stainless steel trim offers full display all the way down to the floor
Interior LED lighting	Fully lit interior with a striking blue LED hue, providing an attractive and energy efficient view
Self-closing door	Door will automatically close when left ajar, preventing items from accidentally being left exposed to ambient temperatures
Digital thermostat	Electronic controls for precise temperature management, with a readout viewable in Celsius or Fahrenheit



## SCR1401LHX Specifications:

Overview	
Height of Cabinet	69.75" (177 cm)
Width	23.63" (60 cm)
Depth	23.75" (60 cm)
Depth with Handle	25.63" (65 cm)
Depth with door at 90°	46.75" (119 cm)
Capacity	12.6 cu.ft. (357 L)
Bottles	80 bottles
Defrost Type	Frost-Free
Door	Glass
Cabinet	Black
US Electrical Safety	ETL
Canadian Electrical Safety	ETL-C
Sanitation	ETL-S
Amps	1.7
Voltage/Frequency	115 V AC/60 Hz
Weight	300.0 lbs. (136 kg)
Shipping Weight	300.0 lbs. (136 kg)
Parts & Labor Warranty	1 Year
Compressor Warranty	5 Years
UPC	761101059839
Wine Cellar	
Number of Zones	1
Door Swing	LHD
Reversible	No
Shelf Type	Steel
Thermostat Type	Digital
Interior Light	Yes
Fan Type	Interior and Exterior
Refrigerant Type	R600a
Refrigerant Amount	1.76 oz.
High Side PSI	270.0
Low Side PSI	105.0
Interior Height 1	59.75" (152 cm)
Interior Width 1	19.5" (50 cm)
Interior Depth 1	16.5" (42 cm)
Compressor Step Height	4.5" (11 cm)
Compressor Step Width	19.5" (50 cm)

Compressor Step Depth	4.5" (11 cm)
Temperature Range	36 to 68°F
Sabbath Mode	Yes

