



Glass Door Merchandisers

Models RE-CN-0045-HC, 0009-HC, 0014-HC, 0023-HC, 0023-H,
0052-HC, FR-CN-0790-HC, 1250-HC, 1250-C

Items 50032, 50033, 50034, 50036, 50037, 50052, 50030, 50031, 38025

Instruction Manual



Revised - 12/20/2017



Toll Free: 1-800-465-0234
Fax: 905-607-0234
Email: service@omcan.com
www.omcan.com



NEMA 5 - 15 125 VAC / 15 AMP RECEPTACLE	
NEMA 5 - 20 125 VAC / 20 AMP RECEPTACLE	

Table of Contents

Model RE-CN-0045-HC / Model RE-CN-0009-HC / Model RE-CN-0014-HC
Model RE-CN-0023-HC / Model RE-CN-0023-H / Model RE-CN-0052-HC
Model FR-CN-0790-HC / Model FR-CN-1250-HC / Model FR-CN-1250-C

Section	Page
General Information -----	3 - 4
Safety and Warranty -----	4 - 5
Technical Specifications -----	6 - 7
Installation -----	7
Maintenance -----	8
Troubleshooting -----	8
Controller Instructions -----	9 - 14
Parts Breakdown -----	15 - 27
Electrical Schematics -----	28 - 31
Notes -----	32 - 34
Warranty Registration -----	36



General Information

Omcan Manufacturing and Distributing Company Inc., Food Machinery of America, Inc. dba Omcan and Omcan Inc. are not responsible for any harm or injury caused due to any person's improper or negligent use of this equipment. The product shall only be operated by someone over the age of 18, of sound mind, and not under the influence of any drugs or alcohol, who has been trained in the correct operation of this machine, and is wearing authorized, proper safety clothing. Any modification to the machine voids any warranty, and may cause harm to individuals using the machine or in the vicinity of the machine while in operation.

CHECK PACKAGE UPON ARRIVAL

Upon receipt of an Omcan shipment please inspect for external damage. If no damage is evident on the external packaging, open carton to ensure all ordered items are within the box, and there is no concealed damage to the machine. If the package has suffered rough handling, bumps or damage (visible or concealed), please note it on the bill of lading before accepting the delivery and contact Omcan within 24 hours, so we may initiate a claim with the carrier. A detailed report on the extent of the damage caused to the machine must be filled out within three days, from the delivery date shown in the shipping documents. Omcan has no recourse for damaged products that were shipped collect or third party.

Before operating any equipment, always read and familiarize yourself with all operation and safety instructions.

Omcan would like to thank you for purchasing this machine. It's of the utmost importance to save these instructions for future reference. Also save the original box and packaging for shipping the equipment if servicing or returning of the machine is required.

Omcan Fabrication et distribution Compañie Limité et Food Machinery d'Amérique, dba Omcan et Omcan Inc. ne sont pas responsables de tout dommage ou blessure causé du fait que toute personne ait utilisé cet équipement de façon irrégulière. Le produit ne doit être exploité que par quelqu'un de plus de 18 ans, saine d'esprit, et pas sous l'influence d'une drogue ou d'alcool, qui a été formé pour utiliser cette machine correctement, et est vêtu de vêtements de sécurité approprié. Toute modification de la machine annule toute garantie, et peut causer un préjudice à des personnes utilisant la machine ou des personnes à proximité de la machine pendant son fonctionnement.

VÉRIFIEZ LE COLIS DÈS RÉCEPTION

Dès réception d'une expédition d'Omcan veuillez inspecter pour dommages externes. Si aucun dommage n'est visible sur l'emballage externe, ouvrez le carton afin de s'assurer que tous les éléments commandés sont dans la boîte, et il n'y a aucun dommage dissimulé à la machine. Si le colis n'a subi aucune mauvaises manipulations, de bosses ou de dommages (visible ou cachée), notez-le sur le bond de livraison avant d'accepter la livraison et contactez Omcan dans les 24 heures qui suivent, pour que nous puissions engager une réclamation auprès du transporteur. Un rapport détaillé sur l'étendue des dommages causés à la machine doit être rempli dans un délai de trois jours, à compter de la date de livraison indiquée dans les documents d'expédition. Omcan n'a aucun droit de recours pour les produits endommagés qui ont été expédiés ou cueilli par un tiers transporteur.

General Information

Avant d'utiliser n'importe quel équipement, toujours lire et vous familiariser avec toutes les opérations et les consignes de sécurité.

Omcan voudrais vous remercier d'avoir choisi cette machine. Il est primordial de conserver ces instructions pour une référence ultérieure. Également conservez la boîte originale et l'emballage pour l'expédition de l'équipement si l'entretien ou le retour de la machine est nécessaire.

Omcan Empresa De Fabricacion Y Distribucion Inc. Y Maquinaria De Alimentos De America, Inc. dba Omcan y Omcan Inc. no son responsables de ningun daño o perjuicio causado por cualquier persona inadecuada o el uso descuidado de este equipo. El producto solo podra ser operado por una persona mayor de 18 años, en su sano juicio y no bajo alguna influencia de droga o alcohol, y que este ha sido entrenado en el correcto funcionamiento de esta máquina, y ésta usando ropa apropiada y autorizada. Cualquier modificación a la máquina anula la garantía y puede causar daños a las personas usando la máquina mientras esta en el funcionamiento.

REVISE EL PAQUETE A SU LLEGADA

Tras la recepcion de un envio Omcan favor inspeccionar daños externos. Si no hay daños evidentes en el empaque exterior, Habra el carton para asegurarse que todos los articulos solicitados estén dentro de la caja y no encuentre daños ocultos en la máquina. Si el paquete ha sufrido un manejo de poco cuidado, golpes o daños (visible o oculto) por favor anote en la factura antes de aceptar la entrega y contacte Omcan dentro de las 24 horas, de modo que podamos iniciar una reclamación con la compañía. Un informe detallado sobre los daños causados a la máquina debe ser llenado en el plazo de tres días, desde la fecha de entrega que se muestra en los documentos de envío. Omcan no tiene ningun recurso por productos dañados que se enviaron a recoger por terceros.

Antes de utilizar cualquier equipo, siempre lea y familiarizarse con todas las instrucciones de funcionamiento y seguridad.

Omcan le gustaría darle las gracias por la compra de esta máquina. Es de la mayor importancia para salvar estas instrucciones para futuras consultas. Además, guarda la caja original y el embalaje para el envío del equipo si servicio técnico o devolución de la máquina que se requiere.

Safety and Warranty

- To minimize shock and fire hazards, be sure not to overload the outlet.
- To minimize electric shock and malfunction, do not spray the unit with water.
- To minimize fire hazards, do not use flammable spray products near the unit.
- After unplugging the unit, wait at least 6 minutes before re-plugging it. It may cause compressor failure if plugged in before 6 minutes waiting period.
- Cautions for cleaning:
 - Unplug the power cord before cleaning.

Safety and Warranty

- Do not unplug-plug the power cord with wet hands.
- Do not use an abrasive cleaners, solvents or polishing agents on plastic parts. Doing so might cause cracking or discoloring.
- When it is not in use:
 - Unplug the power cord.
 - Wipe inside with dry cloth, and you may leave the door slightly open to eliminate moisture and odor.

1 YEAR PARTS AND LABOUR / 5 YEARS PARTS ONLY ON COMPRESSOR WARRANTY

Within the warranty period, contact Omcan Inc. at 1-800-465-0234 to schedule an Omcan authorized service technician to repair the equipment locally.

Unauthorized maintenance will void the warranty. Warranty covers electrical and part failures, not improper use.

Please see www.omcan.com/warranty.html for complete info.

WARNING:

The packaging components are classified as normal solid urban waste and can therefore be disposed of without difficulty.

In any case, for suitable recycling, we suggest disposing of the products separately (differentiated waste) according to the current norms.

DO NOT DISCARD ANY PACKAGING MATERIALS IN THE ENVIRONMENT!

Technical Specifications

GLASS DOOR COOLERS

Model	RE-CN-0045-HC	RE-CN-0009-HC	RE-CN-0014-HC
Temperature Range	0.5°C - 5°C / 33°F - 41°F		
Max Ambient Temp rating	32.2°C / 90°F		
Horsepower	1/4+ HP	1/5 HP	
Electrical	115V / 60Hz / 1		
Amps	4.3	2.88	
Refrigerant	R290		
Isolation Material	R141b		
Cooling System	Ventilated		
# of Doors	2	1	
# of Shelves	8	4	
Shelf Capacity	90 lbs. / 40.8 kgs.		
Exterior Dimensions	53" x 32" x 79.5" 1350 x 810 x 2015mm	21.5" x 21.5" x 63" 550 x 550 x 1600mm	26" x 25.6" x 80.5" 660 x 650 x 2040mm
Interior Dimensions	50" x 28.5" x 62" 1270 x 724 x 1575mm	19" x 18.3" x 47" 483 x 464 x 1194mm	21.3" x 19.3" x 55.1" 540 x 490 x 1400mm
Net Volume	1270 L / 45 cu. ft.	258 L / 9.1 cu. ft.	368 L / 13 cu. ft.
Weight	441 lbs. / 200 kgs.	203 lbs. / 92.1 kgs.	308 lbs. / 139.7 kgs.
Item Number	50032	50033	50034

Model	RE-CN-0023-HC	RE-CN-0023-H	RE-CN-0052-HC
Temperature Range	0.5°C - 5°C / 33°F - 41°F		
Max Ambient Temp rating	32.2°C / 90°F		
Horsepower	1/5 HP		3/4 HP
Electrical	115V / 60Hz / 1		
Amps	3		10.7
Refrigerant	R290		
Isolation Material	R141b		
Cooling System	Ventilated		
# of Doors	1		3
# of Shelves	4		12
Shelf Capacity	90 lbs. / 40.8 kgs.		
Exterior Dimensions	28.5" x 32" x 79.5" 720 x 810 x 2015mm		78.5" x 30" x 80.75" 1988 x 760 x 2050mm
Interior Dimensions	25.2" x 28.3" x 62.3" 640 x 719 x 1582mm		73.5" x 25.6" x 55.7" 1867 x 650 x 1415mm
Net Volume	648 L / 23 cu. ft.		1500 L / 53 cu. ft.
Weight	320 lbs. / 145.2 kgs.		615 lbs. / 279 kgs.
Item Number	50036	50037	50052



Technical Specifications

GLASS DOOR FREEZERS

Model	FR-CN-0790-HC	FR-CN-1250-HC	FR-CN-1250-C
Temperature Range	-23°C - -18°C / -10°F - 0°F		
Max Ambient Temp rating	32.2°F / 90°F		
Horsepower	3/4 HP		
Electrical	115V / 60Hz / 1		
Amps	9.4		
Refrigerant	R290		
Isolation Material	R141b		
Cooling System	Ventilated		
# of Doors	1	2	
# of Shelves	4	8	
Shelf Capacity	90 lbs. / 40.8 kgs.		
Exterior Dimensions	31" x 31.5" x 80.75" 790 x 795 x 2050mm	49" x 26" x 80.5" 1250 x 665 x 2040mm	
Interior Dimensions	25.2" x 28.4" x 62" 640 x 720 x 1575mm	43.3" x 19.3" x 55.1" 1100 x 490 x 1400mm	
Net Volume	648 L / 23 cu. ft.	830 L / 29 cu. ft.	
Weight	364 lbs. / 165.1 kgs.	397 lbs. / 180.1 kgs.	
Item Number	50030	50031	38025

Installation

IMPORTANT!!!PLEASE READ BEFORE INSTALLATION

- The refrigeration system operates most efficiently when installed in an area with cool, dry air circulation.
- There must be at least 6 inches of clearance on both sides and the back of the cabinet.
- Select a location away from the heat and moisture generating equipment such as stoves, ovens, etc.
- Avoid direct sun rays.
- Be sure that the floor where you intend to install that unit is strong and level enough to support the total weight of the unit and its contents.
- To minimize shock and fire hazards, be sure that the unit is properly grounded. For your safety and protection, all units are equipped with a special three-prong grounding plug on the service cord.
- All units are designed for indoor use. Outdoor use may cause significant damage to the unit.

Maintenance

- When loading the unit:
 - Be careful not to block the air duct located at the back and the fan on the ceiling of the unit with contents.
 - Blocking the air flow may cause decrease in performance.
 - For the best performance, maintain at least 4 inches of clearance between the contents and the air duct.
- Set the shelves that come with the unit to fit your needs.
- Temperature controller:
 - The controller is located at the right, front corner of the ceiling, or on the front bottom panel.
 - To adjust temperature please refer to the manual of temperature controller.
- Do not leave the unit door open for long period of time. For the most efficient operation, close the door immediately after the use.

Troubleshooting

SYMPTOMS	POSSIBLE CAUSE
Compressor will not start	Check if the power cord has been plugged in.
	Check for blown fuse.
Poor Performance	Move the unit from direct sun light, and avoid installing heating devices near the unit.
	Install the unit in a well ventilated place with minimum of 6" clearance in the back.
	Check the condenser, and clean if heavy dust is collected.
	Check to see if contents are blocking the air duct.
	Check to see if refrigerant charge is low.
	Make sure the door is completely closed.
No Interior Light	Turn off the light switch and turn it on again.
	Make sure the light is correctly inserted into the sockets.
	Check the light, and replace it if blown.
Unit Noisy	Make sure to install the unit on level surface.
	Make sure to maintain the minimum clearance of 6" from the wall.
	Check for the loose parts or mounting.
	Make sure the tubing is free from any contact to avoid tubing rattle.
Condensation on Cabinet and/or Floor	Reduce the relative humidity in the area where the unit is installed.
	Gasket on door or head section is not sealing properly. Repair or replace gasket as necessary.

Controller Instructions

Digital controller model: PJEZ for cooler



Dimensioni (mm) / Dimensions (mm)

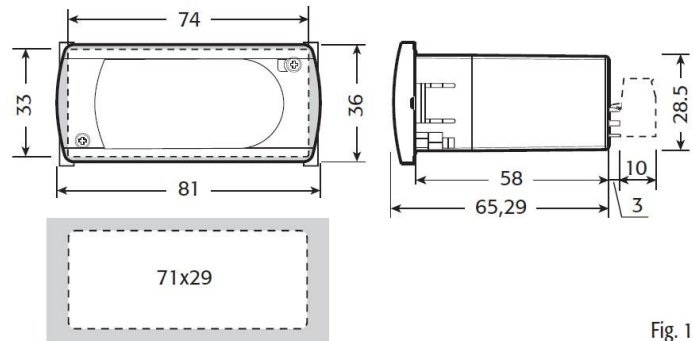







Fig. 1

Display and functions


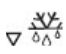

During normal operation, the controller displays the value of the probe set using parameter/4(=1 ambient probe, default, = 2 second probe, = 3 third probe). In addition, the display has LEDs that indicate the activation of the control functions (see Table 1), while the 3 buttons can be used to activate/deactivate some of the functions(see Table 2).

LED's and Associated Functions (Table 1)

Icon	Function	Normal Operation			Start Up
		ON	OFF	Blink	
	Compressor	On	Off	Request	ON
	Fan	On	Off	Request	ON
	Defrost	On	Off	Request	ON
AUX	Aux	Output On	Output Off	-	ON
	Alarm	All	No Alarm	-	ON
	Clock	RTC fitted and enabled, at least 1 time band set	RTC not fitted or disabled, not even 1 time band set	-	ON if RTC fitted

Controller Instructions

Table of Functions activated by the buttons - Models S, X, Y, C (Table 2)

Button		Normal Operation		Start Up	
		Pressing the Button Alone	Pressed Together		
	Up ON/OFF	More than 3 sec: toggle ON/OFF	Start/Stop continuous cycle	-	
	Down Defrost	More than 3 sec: start/stop defrost			
	Set Mute	- 1 sec.: display/set the set point. - more than 3 secs.: access parameter setting menu (enter password) - mute audible alarm (buzzer)	-	Pressed together Start parameter reset procedure	For 1 sec. display firmware vers. code
					For 1 sec. RESET current EZY set

Setting the set point (desired temperature)

- press **SET** for 1 sec, the set value will start flashing after a few moments;
- increase or decrease the value using **UP** or **DOWN**;
- press **SET** to confirm the new value.

Switching the device ON/OFF

Press **UP** for more than 3 sec. The control and defrost algorithms are now disabled and the Instrument displays the message “OFF” alternating with the temperature read by the set probe.

Manual defrost

Press for **DOWN** more than 3 sec (the defrost starts only the temperature conditions are valid).

Continuous cycle

Press **UP** and **DOWN** together for more than 3 sec.

Access and setting type F (frequent) and type C (configuration) parameters.

1. Press **SET** for 3 sec (the display will show “PS”).
2. • To access the type F and C parameter menu, enter the password “22” using **UP/DOWN**, press **SET** to confirm.
• To access the F parameter menu only, press **SET** (without entering the password).
3. Scroll inside the parameter menu using **UP/DOWN**.

Controller Instructions

• To display/set the values of the parameter displayed, press **SET**, then **UP/DOWN** and finally **SET** to confirm the changes (returning to the parameter menu).

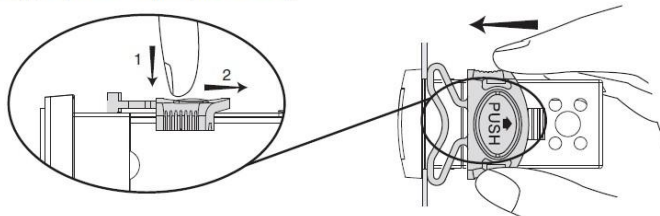
To save all the new values and exit the parameter menu, press **SET** for 3 s.

To exit the menu without saving the changed values (exit by timeout) do not press any button for at least 60 s.

Digital controller model: IR33 for freezer

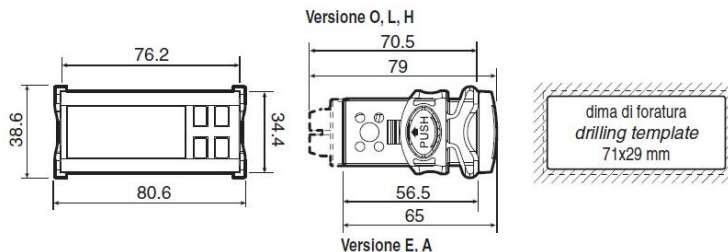


Montaggio a pannello ir33/ir33 panel mounting:



Montaggio a pannello mediante due staffe plastiche a scorrimento laterale
Panel mounting by two lateral sliding plastic brackets

Dimensioni (mm) /Dimensions (mm)






Signals on the display

The blinking status indicates a request for activation that cannot be implemented until the end of the Corresponding delay times.



Icon	Function	ON	OFF	Blink	Startup
	Compressor	Compressor on	Compressor off	Request	
	Fan	Fan on	Fan off	Request	
	Defrost	Defrost in progress	Defrost not required	Request	
AUX	Aux	Auxiliary Output AUX active	Auxiliary Output AUX not active	Anti-sweat heater function active	
	Alarm	Delayed external alarm (before the expiry of the time 'A7')	No alarm present	Alarms in normal operation (eg. high/low temp.) or alarm from ext. digital input immediate or delayed	
	Clock	At least one timed defrost has been set	No timed defrost is present	Clock alarm	On if Real-Time Clock present

Controller Instructions

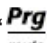

	Light	Auxiliary output light active	Auxiliary output light not active	Anti-sweat heater function active	
	Service		No malfunction	Malfunction (eg. EEPROM error or probe fault)	
HACCP	HACCP	HACCP function	HACCP function enabled	HACCP alarm (HA and/or HF) not enabled	
	Continuous Cycle	Enabled	Not enabled	Request	

Setting the set point (desired temperature value)

To display or set the set point, proceed as follow:

1. press the “Set” button for more than 1 second to display the set point;
2. increase or decrease the value of the set point, using the “ *aux*” and “ *def*” respectively, until reaching the desired value;
3. press the “Set” button again to confirm the new value,



Alarms with manual reset

The alarms with manual reset can be reset by pressing the “ *Prg* *mute*” and “ *aux*” for more than 5 sec.




Manual defrost

As well as the automatic defrost function, a manual defrost can be enabled, if the temperature conditions allow, by pressing the “ *def*” button for more than 5 sec.

Continuous cycle

Pressing the buttons “ *aux*” and “ *def*” simultaneously for more than 5 seconds enables the continuous cycle function. During operation in continuous cycle, the compressor continues to operate for the time “cc” and it stops when it reaches the “cc” time out or the minimum temperature has been reached (AL = minimum temperature alarm threshold). Continuous cycle setting: “cc” parameter (continuous cycle duration): “cc”=0 never active; “c6” parameter (by passing the alarm after the continuous cycle): “cc” = 0 never active; it avoid or delays the low temperature alarm after the continuous cycle.

Accessing the configuration parameter (type C)

1. Pressing the “ *Prg* *mute*” and “Set” buttons at the same time for more than 5 sec, the display will show “00”(password prompt).
2. Use the “ *aux*” or “ *def*” buttons to display the number “22” (parameter access password).
3. Confirm by pressing “Set”.
4. The display will show the first modifiable “C” parameter.

Controller Instructions

Accessing the configuration parameter (type F)

1. Hold the "**Prg**_{mute}" button for more than 5 s (if there are active alarms, first mute the buzzer), the display will show the first modifiable "F" parameter.

Modifying the parameters

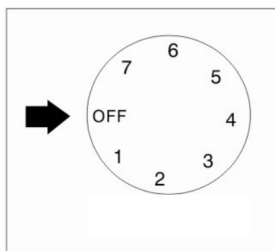
After having displayed the parameter, either type "C" or type "F", proceed as follows:

1. Use the "**▲**_{aux}" or "**▼**_{def}" buttons to scroll the parameters, until reaching the parameter to be modified; when scrolling the parameters, an icon is shown on the display that represents the category of the parameter.
2. Alternatively, press the "**Prg**_{mute}" button to display a menu that can be used to quickly access the family of parameters to be modified.
3. Scrolling the menu using the "**▲**_{aux}" and "**▼**_{def}" buttons displays the codes of the various categories of parameter, accompanied by the corresponding icon on the display(if present).
4. Once having reached the desired category, press "**Set**" to go directly to the first parameter in the chosen category(if no parameter is visible, pressing the "**Set**" button will have no effect).
5. At this stage, modify the parameters or return to the "Category" menu, using the "**Prg**_{mute}" button.
6. Press "**Set**" to display the value associated with the parameter.
7. Increase or decrease the value using the "**▲**_{aux}" or "**▼**_{def}" buttons respectively.
8. Press "**Set**" to temporarily save the new value and return to the display of the parameter.
9. Repeat the operation from point 1 or point 2.
10. If the parameter has sub-parameters, press "**Set**" to display the first sub-parameter.
11. Press the "**▲**_{aux}" or "**▼**_{def}" button to display all the sub-parameters.
12. Press "**Set**" to display the associated value.
13. Increase or decrease the value using the "**▲**_{aux}" or "**▼**_{def}" button respectively.
14. Press "**Set**" to temporarily save the new value and return to the display of the sub-parameter code.
15. Press "**Prg**_{mute}" to return to the display of the parent parameter.

Saving the new values assigned to the parameters

To definitely save the new values of the modified parameters, press the "**Prg**_{mute}" button for more than 5 seconds, thus exiting the parameter setting procedure. All the modification made to the parameters temporarily saved in the RAM, can be cancelled and "normal operation" resumed by not pressing any button for 60 seconds, thus allowing the parameter setting session to expire due to timeout if the Instrument is switched off before pressing the "**Prg**_{mute}" button, all the modifications made to the parameters and temporarily saved will be lost.

Mechanical Controller Instructions



OFF: shut the compressor off

Temperature range from 7 (coldest) to 1 (warmest).

CAUTION: Setting the temperature control to the coldest setting may cause the evaporator coil to freeze and ice up. This will eventually result in a warmer cabinet temperature.

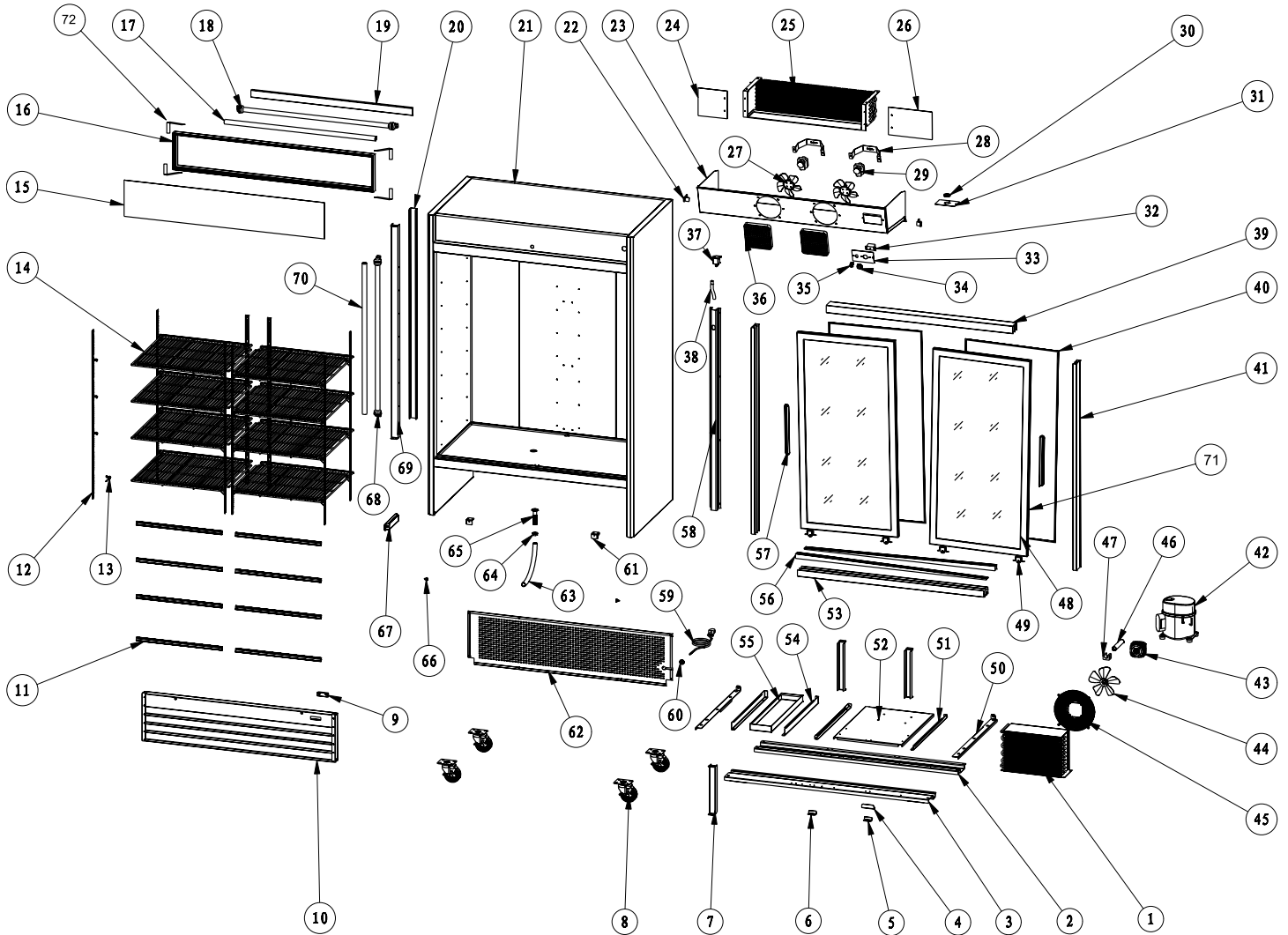
Controller Instructions

REFERENCE

Item Number	Model Number	Description	Manufacturer Model Number
50032	RE-CN-0045-HC	Refrigerator 2 Door Glass 44.8 cu ft 110V/60/1 ETL cETLus Energy Star	G1.2YBM2F-HC
50033	RE-CN-0009-HC	Refrigerator 1 Door Glass 9.1 cu ft 110V/60/1 ETL cETLus	G258BMF-HC
50034	RE-CN-0014-HC	Refrigerator 1 Door Glass 14 cu ft 110V/60/1 ETL cETLus	G368BMF-HC
50036	RE-CN-0023-HC	Refrigerator 1 Door Glass 22.8 cu ft 110V/60/1 ETL cETLus	G648BMF-HC
50037	RE-CN-0023-H	Refrigerator 1 Door Glass 22.8 cu ft 110V/60/1 ETL cETLus Black	G648BMF-BL-HC
50052	RE-CN-0052-HC	Refrigerator 3 Door Glass 52.3 cu ft 110V/60/1 ETL cETLus	SG1.9L3-HC
50030	FR-CN-0790-HC	Freezer Glass Door Single Door 31" / 790mm 110V/60/1 ETL cETLus	D648BMF-HC
50031	FR-CN-1250-HC	Freezer Glass Door Dual Door D Breaker 49" / 1250mm 110V/60/1 ETL cETLus	D768BM2F-HC
38025	FR-CN-1250-C	Freezer Glass Door Dual Door Crankcase Regulator 49" / 1250mm 110V/60/1 ETL cETLus	D768BM2F-CPR

Parts Breakdown

Model RE-CN-0045-HC 50032



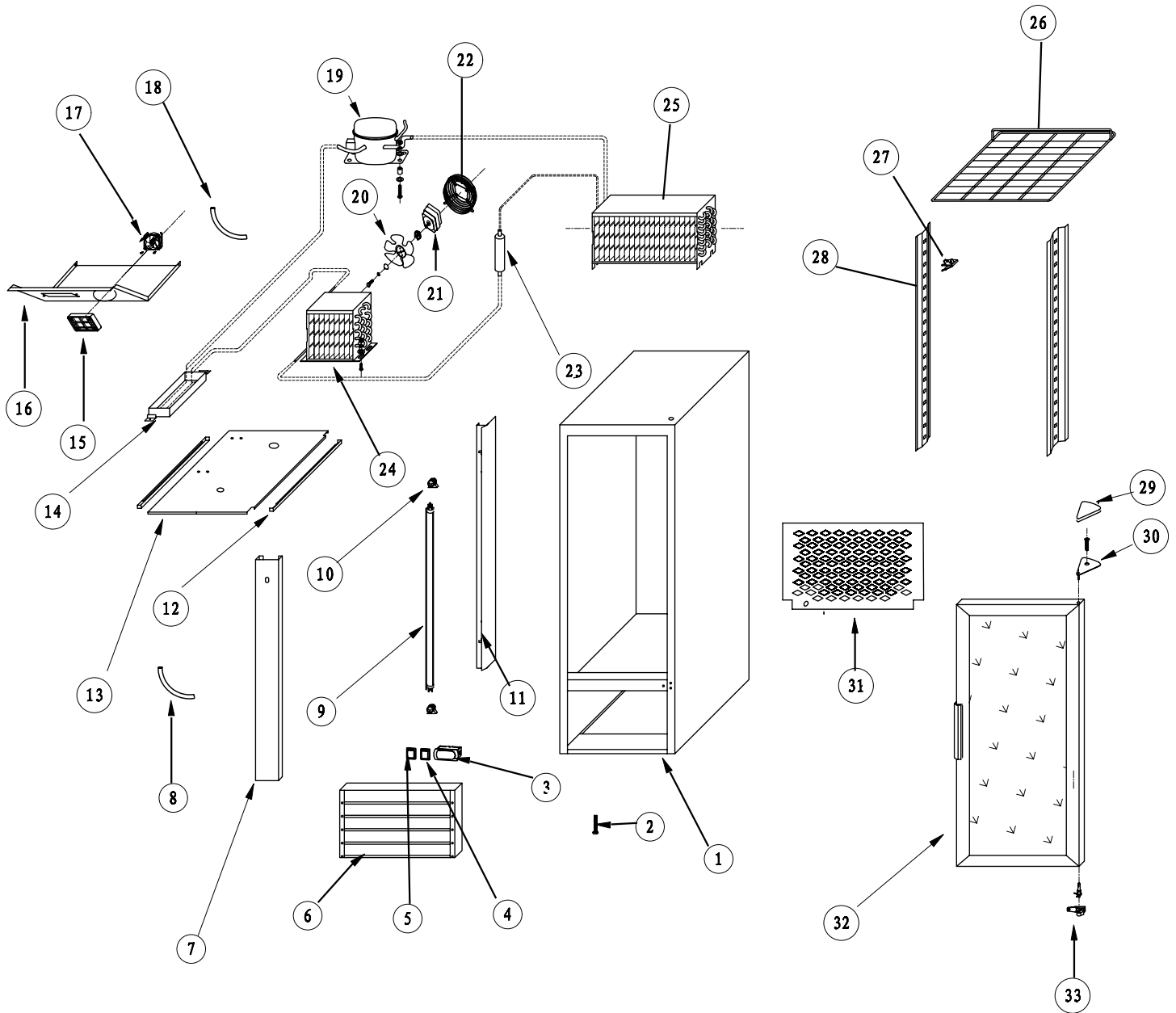
Parts Breakdown

Model RE-CN-0045-HC 50032

Item No.	Description	Position	Item No.	Description	Position	Item No.	Description	Position
27059	Condenser for G1.2YBM2F-HC	1	27085	Evaporator Fan Motor for G1.2YBM2F-HC	27	27109	Link Plate of Castor Mounting Plate for G1.2YBM2F-HC	51
27060	Rear Castor Mounting Plate for G1.2YBM2F-HC	2	27086	Fan Mounting Bracket for G1.2YBM2F-HC	28	27110	Compressor Mounting Plate for G1.2YBM2F-HC	52
27061	Front Castor Mounting Plate for G1.2YBM2F-HC	3	26711	Evaporator Fan Motor for G1.2YBM2F-HC	29	27111	Down Cabinet Frame for G1.2YBM2F-HC	53
27062	Handle of Mounting Plate for G1.2YBM2F-HC	4	27088	Wire Cover for G1.2YBM2F-HC	30	27112	Rack of Water Tray for G1.2YBM2F-HC	54
27063	Stop Block of Mounting Plate for G1.2YBM2F-HC	5	27089	Wire Protection Plate for G1.2YBM2F-HC	31	26450	Outside Water Tray for G1.2YBM2F-HC	55
27064	Stop Block of Water Tray for G1.2YBM2F-HC	6	27090	Mechanical Thermostat for G1.2YBM2F-HC	32	26451	Door Rack Left for G1.2YBM2F-HC	56
27065	Support Plate for G1.2YBM2F-HC	7	27091	Thermostat Panel for G1.2YBM2F-HC	33	26452	Door Handle for G1.2YBM2F-HC	57
26246	Castor for G1.2YBM2F-HC	8	27092	Thermostat Knob for G1.2YBM2F-HC	34	26453	Pipe Cover for G1.2YBM2F-HC	58
27067	Temperature Show for G1.2YBM2F-HC	9	27093	Switch for G1.2YBM2F-HC	35	26454	Power Plug for G1.2YBM2F-HC	59
27068	Down Shutter for G1.2YBM2F-HC	10	27094	Evaporator Fan Net for G1.2YBM2F-HC	36	26455	Wire Cover for G1.2YBM2F-HC	60
27069	Decoration Strip of Shelf for G1.2YBM2F-HC	11	27095	Drain Pipe for G1.2YBM2F-HC	37	26456	Shutter Fastener for G1.2YBM2F-HC	61
27070	K Strip for G1.2YBM2F-HC	12	27096	Soft Drain Pipe for G1.2YBM2F-HC	38	26457	Diamond Shape Cover for G1.2YBM2F-HC	62
26884	K Clip for G1.2YBM2F-HC	13	27097	Upper Cabinet Frame for G1.2YBM2F-HC	39	26458	Soft Drain Pipe for G1.2YBM2F-HC	63
27072	Shelf for G1.2YBM2F-HC	14	27098	Door Seal for G1.2YBM2F-HC	40	26459	Plastic Cover of Drain Hole for G1.2YBM2F-HC	64
27073	Light Board for G1.2YBM2F-HC	15	27099	Left and Right Cabinet Frame for G1.2YBM2F-HC	41	26460	Plastic Drain Pipe for G1.2YBM2F-HC	65
27074	Light Box for G1.2YBM2F-HC	16	64168	Compressor (R290) for G1.2YBM2F-HC	42	26461	Fasten Wheel of Down Shutter for G1.2YBM2F-HC	66
27075	Light Cover for G1.2YBM2F-HC	17	27101	Condenser Fan Motor for G1.2YBM2F-HC	43	26462	Ballast for G1.2YBM2F-HC	67
27076	Light for G1.2YBM2F-HC	18	26474	Condenser Fan for G1.2YBM2F-HC	44	26463	Light for G1.2YBM2F-HC	68
27077	Mounting Plate of Light for G1.2YBM2F-HC	19	27103	Condenser Fan Cover for G1.2YBM2F-HC	45	26464	Front Board of Central Pillar for G1.2YBM2F-HC	69
27078	Backboard of Central Pillar for G1.2YBM2F-HC	20	27104	Filter for G1.2YBM2F-HC	46	26465	Light Cover for G1.2YBM2F-HC	70
27079	Cabinet for G1.2YBM2F-HC	21	27105	Filter Base for G1.2YBM2F-HC	47	31813	Felt Seal of Glass Door for G1.2YBM2F-HC	71
27080	Bracket of Fan Cover for G1.2YBM2F-HC	22	27106	Glass Door Left for G1.2YBM2F-HC	48	39366	L Shape Bracket for Light Box for G1.2YBM2F-HC	72
27081	Fan Cover for G1.2YBM2F-HC	23	37533	Glass Door Right for G1.2YBM2F-HC	48	31550	Screw for G1.2YBM2F-HC	
27082	Left Cover of Evaporator for G1.2YBM2F-HC	24	27107	Big Door Wheel for G1.2YBM2F-HC	49	31551	Plastic Stopper for G1.2YBM2F-HC	
27083	Evaporator for G1.2YBM2F-HC	25	41825	Small Door Wheel for G1.2YBM2F-HC	49			
27084	Right Cover of Evaporator for G1.2YBM2F-HC	26	27108	Heater of Inside Water Tray for G1.2YBM2F-HC	50			

Parts Breakdown

Model RE-CN-0009-HC 50033



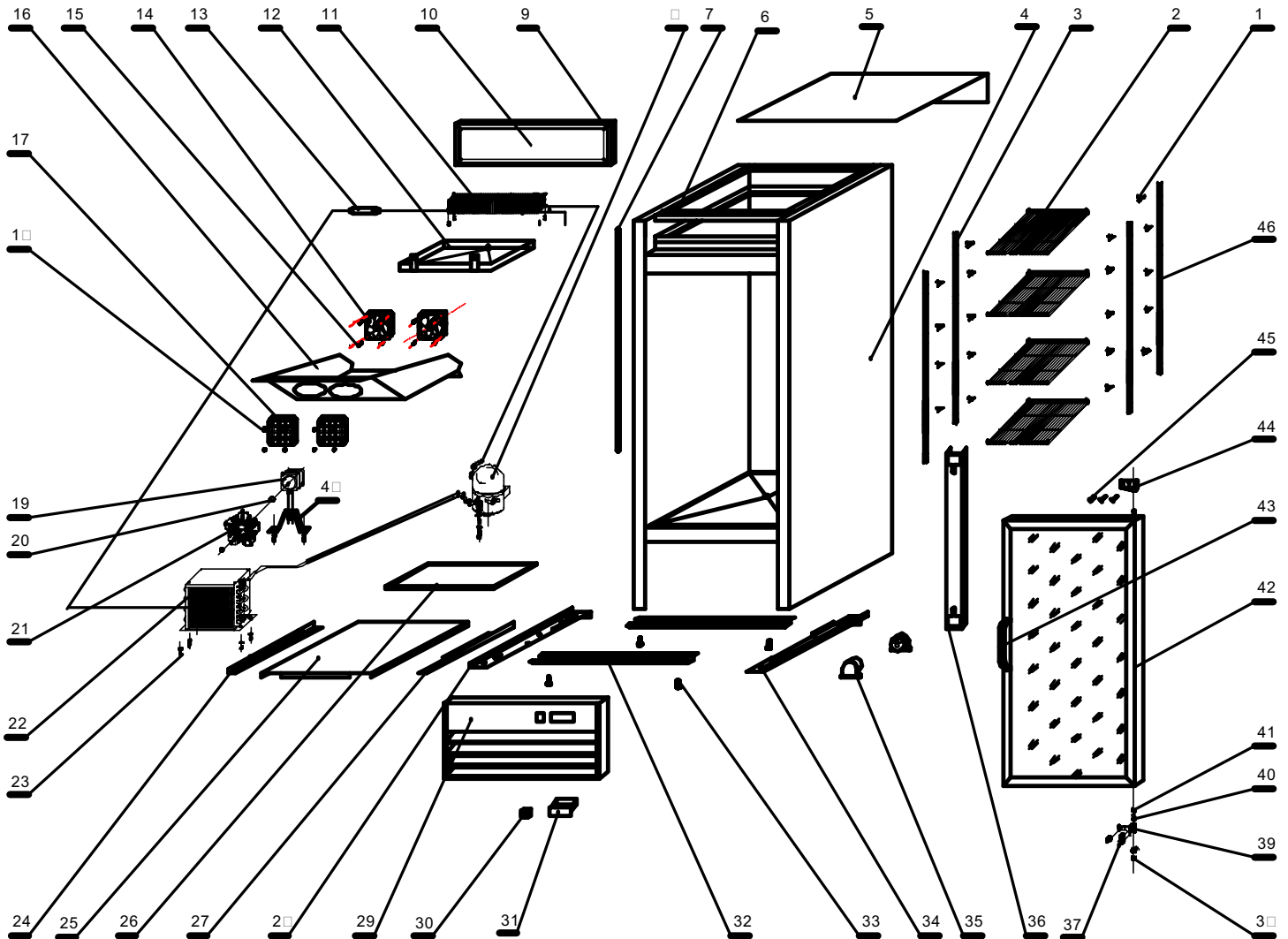
Parts Breakdown

Model RE-CN-0009-HC 50033

Item No.	Description	Position	Item No.	Description	Position	Item No.	Description	Position
28235	Cabinet for G258BMF-HC	1	28246	Track of Compressor Mounting Plate for G258BMF-HC	12	28258	Condenser for G258BMF-HC	24
28236	Screw Feet for G258BMF-HC	2	28247	Compressor Mounting Plate for G258BMF-HC	13	28259	Evaporator for G258BMF-HC	25
27185	Digital Thermostat for G258BMF-HC	3	28248	Exterior Water Tray for G258BMF-HC	14	28260	Shelf for G258BMF-HC	26
28238	Light Switch for G258BMF-HC	4	28249	Evaporator Fan Cover for G258BMF-HC	15	26884	K Clip for G258BMF-HC	27
26192	Power Switch (Green) for G258BMF-HC	5	28250	Evaporator Cover for G258BMF-HC	16	28262	Hanger of K Clip for G258BMF-HC	28
26485	Power Switch (Red) for G258BMF-HC	5	26711	Evaporator Fan Motor for G258BMF-HC	17	28263	Cover of Upper Hinge for G258BMF-HC	29
28240	Control Panel for G258BMF-HC	6	28252	Interior Drain Pipe for G258BMF-HC	18	28264	Upper Hinge for G258BMF-HC	30
28241	Cover of Copper Pipe for G258BMF-HC	7	64167	Compressor (R290) for G258BMF-HC	19	28265	Back Cover for G258BMF-HC	31
28242	Exterior Drain Pipe for G258BMF-HC	8	28254	Condenser Fan for G258BMF-HC	20	28266	Glass Door for G258BMF-HC	32
28243	Fluorescent Light for G258BMF-HC	9	28255	Condenser Fan Motor for G258BMF-HC	21	28267	Bottom Hinge for G258BMF-HC	33
28244	Light Socket for G258BMF-HC	10	28256	Condenser Fan Cover for G258BMF-HC	22			
28245	Light Cover for G258BMF-HC	11	28257	Filter for G258BMF-HC	23			

Parts Breakdown

Model RE-CN-0014-HC 50034



Parts Breakdown

Model RE-CN-0014-HC 50034

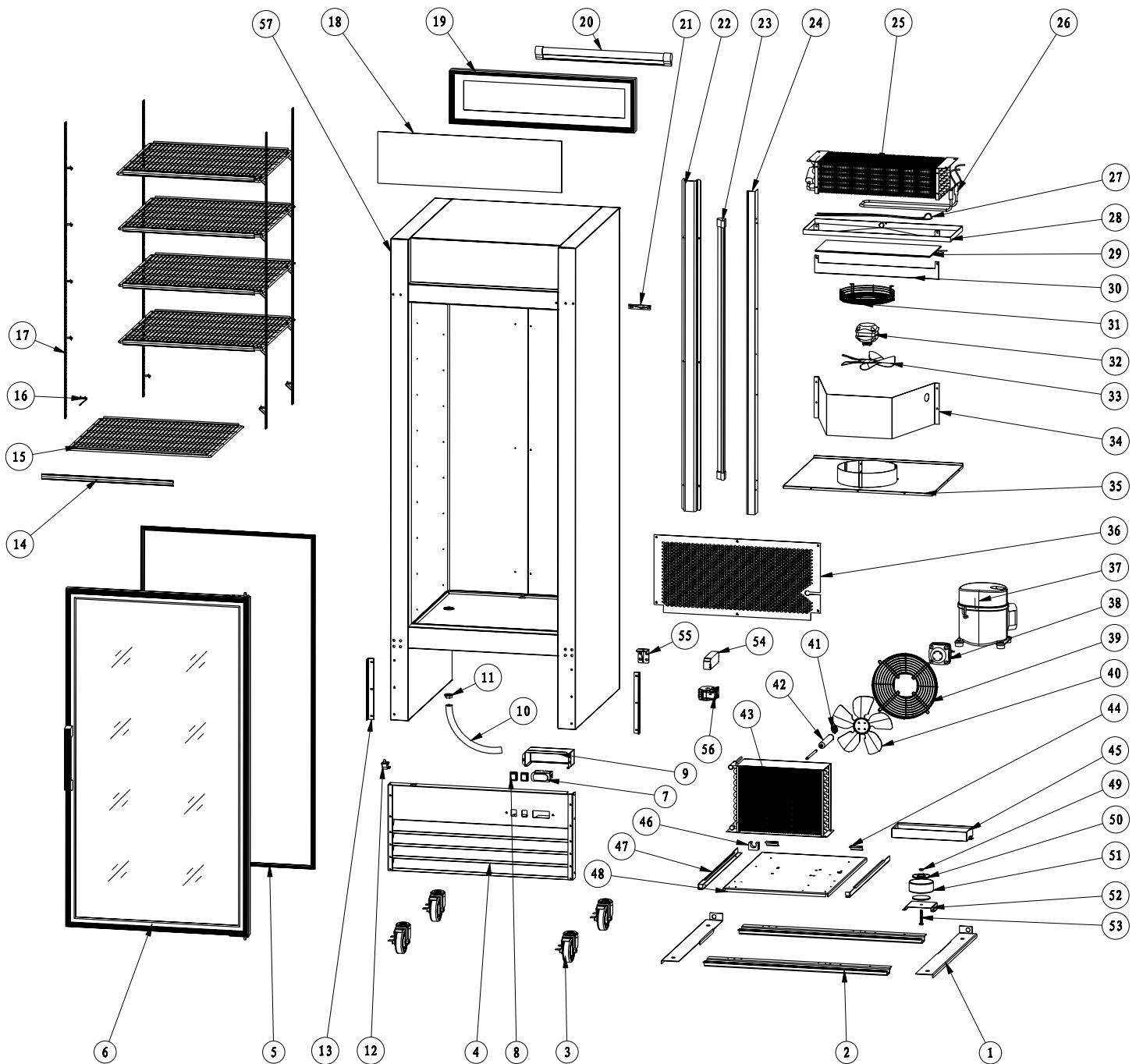
Item No.	Description	Position	Item No.	Description	Position	Item No.	Description	Position
26884	K Clip for G368BMF-HC	1	26715	Screw for G368BMF-HC	18	26731	Link Bar for G368BMF-HC	34
26699	Shelf for G368BMF-HC	2	26716	Condenser Fan Motor for G368BMF-HC	19	26732	Lamp Holder for G368BMF-HC	35
26700	K Clip Hanging Bar for G368BMF-HC	3	26717	Screw Cap for G368BMF-HC	20	26733	Lamp Installing Panel for G368BMF-HC	36
26701	Cabinet for G368BMF-HC	4	26718	Fan for G368BMF-HC	21	26734	Hinge Screw for G368BMF-HC	37
26702	Top Cover for G368BMF-HC	5	26719	Condenser for G368BMF-HC	22	26735	Gasket for G368BMF-HC	38
26703	Top Strengthen Frame for G368BMF-HC	6	26720	Screw for G368BMF-HC	23	26736	Down Hinge for G368BMF-HC	39
26704	Pipe Baffle for G368BMF-HC	7	26721	Installing Panel Bracket for G368BMF-HC	24	26737	Hinge Cover for G368BMF-HC	40
64167	Compressor (R290) for G368BMF-HC	8	26722	Installing Panel for G368BMF-HC	25	26738	Gasket for G368BMF-HC	41
26706	Light Board for G368BMF-HC	9	26723	Outside Water Tray for G368BMF-HC	26	26739	Glass Door for G368BMF-HC	42
26707	Light Board Panel for G368BMF-HC	10	26724	Installing Panel Bracket for G368BMF-HC	27	26740	Door Handle for G368BMF-HC	43
26708	Evaporator for G368BMF-HC	11	26725	Link Bar for G368BMF-HC	28	26741	Upper Hinge for G368BMF-HC	44
26709	Inside Water Tray for G368BMF-HC	12	26726	Down Shutter Panel for G368BMF-HC	29	26742	Hinge Screw for G368BMF-HC	45
26710	Dry Filter for G368BMF-HC	13	26192	Switch (Green) for G368BMF-HC	30	26743	K Clip Hanging Bar for G368BMF-HC	46
26711	Evaporator Fan Motor for G368BMF-HC	14	26485	Switch (Red) for G368BMF-HC	30	27912	Top Light for G368BMF-HC	47
26712	Screw for G368BMF-HC	15	27185	Digital Temp Controller for G368BMF-HC	31	27913	LED Light for G368BMF-HC	48
26713	Evaporator Fan Cover for G368BMF-HC	16	26729	Castor Installing Panel for G368BMF-HC	32	24355	Door Gasket for G368BMF-HC	
26714	Fan Net Cover for G368BMF-HC	17	26730	Screw Foot for G368BMF-HC	33	24356	Spring Hinge for G368BMF-HC	

Parts Breakdown

Model RE-CN-0023-HC 50036

Model RE-CN-0023-H 50037

Model FR-CN-0790-HC 50030



Parts Breakdown

Model RE-CN-0023-HC 50036

Model RE-CN-0023-H 50037

Item No.	Description	Position	Item No.	Description	Position	Item No.	Description	Position
28268	Junction Panel of Castor Mounting Plate for 648BMF-HC	1	28287	LED Light for 648BMF-HC	20	28307	Condenser Fan for 648BMF-HC	40
28269	Castor Mounting Plate for 648BMF-HC	2	28288	Upper Hinge for 648BMF-HC	21	28308	Capillary Tube for 648BMF-HC	41
61386	Castor without Brake for 648BMF-HC	3	28289	Cover of Copper Pipe for 648BMF-HC	22	28309	Filter for 648BMF-HC	42
20468	Castor with Brake for 648BMF-HC	3	28290	LED Light for 648BMF-HC	23	28310	Condenser for 648BMF-HC	43
28271	Control Panel for 648BMF-HC	4	28291	Cover of LED Light for 648BMF-HC	24	28311	Stop Block of Compressor Mounting Plate for 648BMF-HC	44
28272	Door Seal for 648BMF-HC	5	28292	Evaporator for 648BMF-HC	25	28312	Exterior Water Tray for 648BMF-HC	45
28273	Door for 648BMF-HC	6	28293	Defrost Heater for 648BMF-HC	26	28313	Filter Bracket for 648BMF-HC	46
27186	Digital Thermostat for 648BMF-HC	7	28294	Drain Pipe Heater for 648BMF-HC	27	28314	Track of Compressor Mounting Plate for 648BMF-HC	47
26192	Power Switch for 648BMF-HC	8	28295	Interior Water Tray for 648BMF-HC	28	28315	Compressor Mounting Plate for 648BMF-HC	48
28276	Cover of Digital Thermostat for 648BMF-HC	9	28296	Heater of Interior Water Tray for 648BMF-HC	29	28316	Nut for 648BMF-HC	49
28277	Drain Pipe for 648BMF-HC	10	28297	Wind Guider 02 for 648BMF-HC	30	28317	Mounting Plate of Glass Door Heater for 648BMF-HC	50
28278	Connector of Drain Pipe for 648BMF-HC	11	28298	Evaporator Fan Cover for 648BMF-HC	31	28318	Bracket of Glass Door Heater for 648BMF-HC	51
28279	Door Switch for 648BMF-HC	12	28299	Evaporator Fan Motor for 648BMF-HC	32	28319	Glass Door Heater for 648BMF-HC	52
28280	Fastener of Control Panel for 648BMF-HC	13	28300	Evaporator Fan for 648BMF-HC	33	28320	Bolt for 648BMF-HC	53
28281	Clapboard of Shelf for 648BMF-HC	14	28301	Wind Guider for 648BMF-HC	34	28321	LED Light Ballast for 648BMF-HC	54
28282	Shelf for 648BMF-HC	15	28302	Evaporator Cover for 648BMF-HC	35	28322	Bottom Hinge for 648BMF-HC	55
26884	K Clip for 648BMF-HC	16	28303	Back Cover for 648BMF-HC	36	28323	Relay for 648BMF-HC	56
28284	Hanger of K Clip for 648BMF-HC	17	64167	Compressor (R290) for 648BMF-HC	37	28324	Cabinet for 648BMF-HC	57
28285	Light Board for 648BMF-HC	18	28305	Condenser Fan Motor for 648BMF-HC	38			
28286	Light Box for 648BMF-HC	19	28306	Condenser Fan Cover for 648BMF-HC	39			

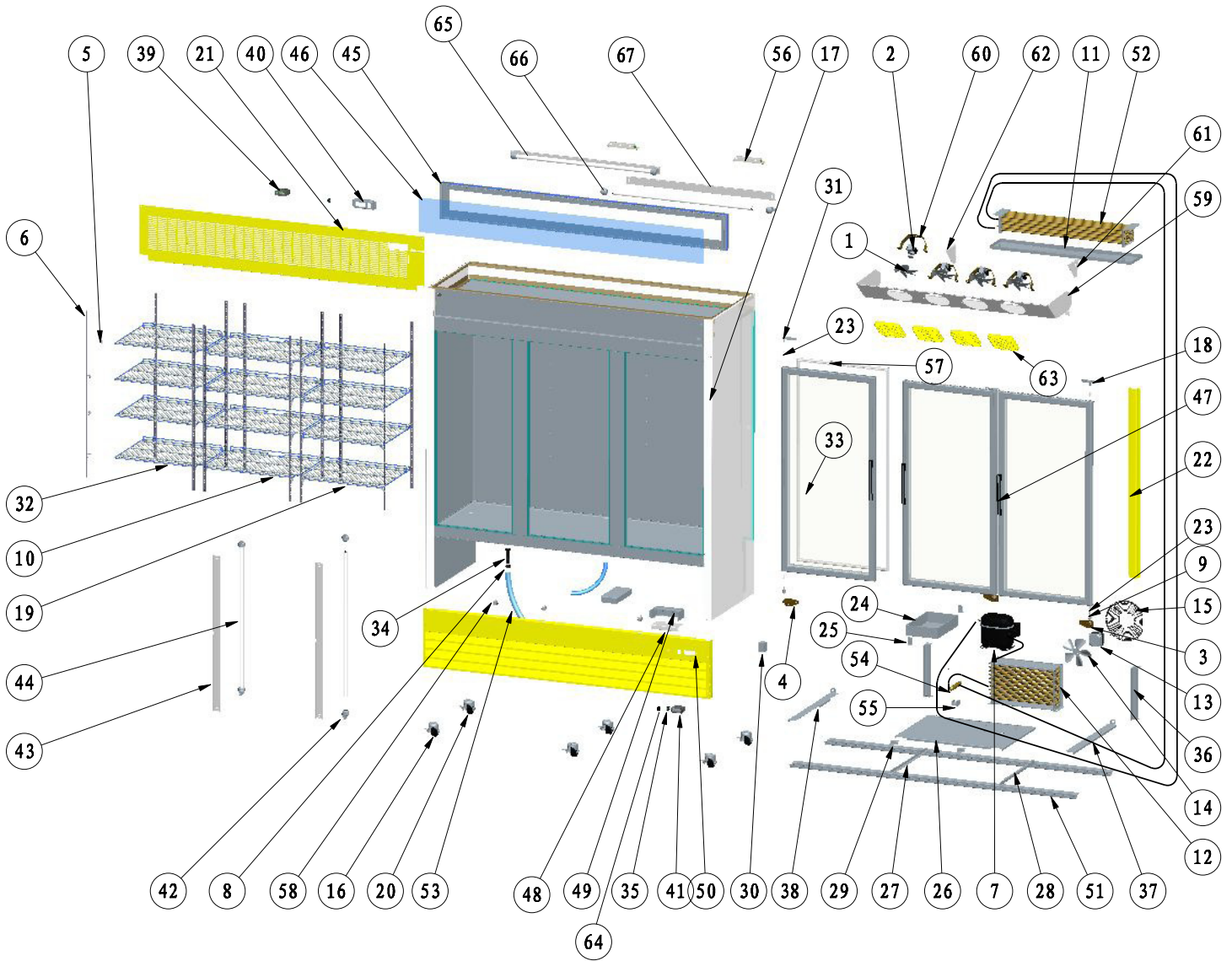
Parts Breakdown

Model FR-CN-0790-HC 50030

Item No.	Description	Position	Item No.	Description	Position	Item No.	Description	Position
28268	Junction Panel of Castor Mounting Plate for 648BMF-HC	1	28287	LED Light for 648BMF-HC	20	28307	Condenser Fan for 648BMF-HC	40
28269	Castor Mounting Plate for 648BMF-HC	2	28288	Upper Hinge for 648BMF-HC	21	28308	Capillary Tube for 648BMF-HC	41
61386	Castor without Brake for 648BMF-HC	3	28289	Cover of Copper Pipe for 648BMF-HC	22	28309	Filter for 648BMF-HC	42
20468	Castor with Brake for 648BMF-HC	3	28290	LED Light for 648BMF-HC	23	28310	Condenser for 648BMF-HC	43
28271	Control Panel for 648BMF-HC	4	28291	Cover of LED Light for 648BMF-HC	24	28311	Stop Block of Compressor Mounting Plate for 648BMF-HC	44
28272	Door Seal for 648BMF-HC	5	28292	Evaporator for 648BMF-HC	25	28312	Exterior Water Tray for 648BMF-HC	45
28273	Door for 648BMF-HC	6	28293	Defrost Heater for 648BMF-HC	26	28313	Filter Bracket for 648BMF-HC	46
27186	Digital Thermostat for 648BMF-HC	7	28294	Drain Pipe Heater for 648BMF-HC	27	28314	Track of Compressor Mounting Plate for 648BMF-HC	47
26192	Power Switch for 648BMF-HC	8	28295	Interior Water Tray for 648BMF-HC	28	28315	Compressor Mounting Plate for 648BMF-HC	48
28276	Cover of Digital Thermostat for 648BMF-HC	9	28296	Heater of Interior Water Tray for 648BMF-HC	29	28316	Nut for 648BMF-HC	49
28277	Drain Pipe for 648BMF-HC	10	28297	Wind Guider 02 for 648BMF-HC	30	28317	Mounting Plate of Glass Door Heater for 648BMF-HC	50
28278	Connector of Drain Pipe for 648BMF-HC	11	28298	Evaporator Fan Cover for 648BMF-HC	31	28318	Bracket of Glass Door Heater for 648BMF-HC	51
28279	Door Switch for 648BMF-HC	12	28299	Evaporator Fan Motor for 648BMF-HC	32	28319	Glass Door Heater for 648BMF-HC	52
28280	Fastener of Control Panel for 648BMF-HC	13	28300	Evaporator Fan for 648BMF-HC	33	28320	Bolt for 648BMF-HC	53
28281	Clapboard of Shelf for 648BMF-HC	14	28301	Wind Guider for 648BMF-HC	34	28321	LED Light Ballast for 648BMF-HC	54
28282	Shelf for 648BMF-HC	15	28302	Evaporator Cover for 648BMF-HC	35	28322	Bottom Hinge for 648BMF-HC	55
26884	K Clip for 648BMF-HC	16	28303	Back Cover for 648BMF-HC	36	28323	Relay for 648BMF-HC	56
28284	Hanger of K Clip for 648BMF-HC	17	64174	Compressor (R290) for 648BMF-HC	37	28324	Cabinet for 648BMF-HC	57
28285	Light Board for 648BMF-HC	18	28305	Condenser Fan Motor for 648BMF-HC	38			
28286	Light Box for 648BMF-HC	19	28306	Condenser Fan Cover for 648BMF-HC	39			

Parts Breakdown

Model RE-CN-0052-HC 50052



Parts Breakdown

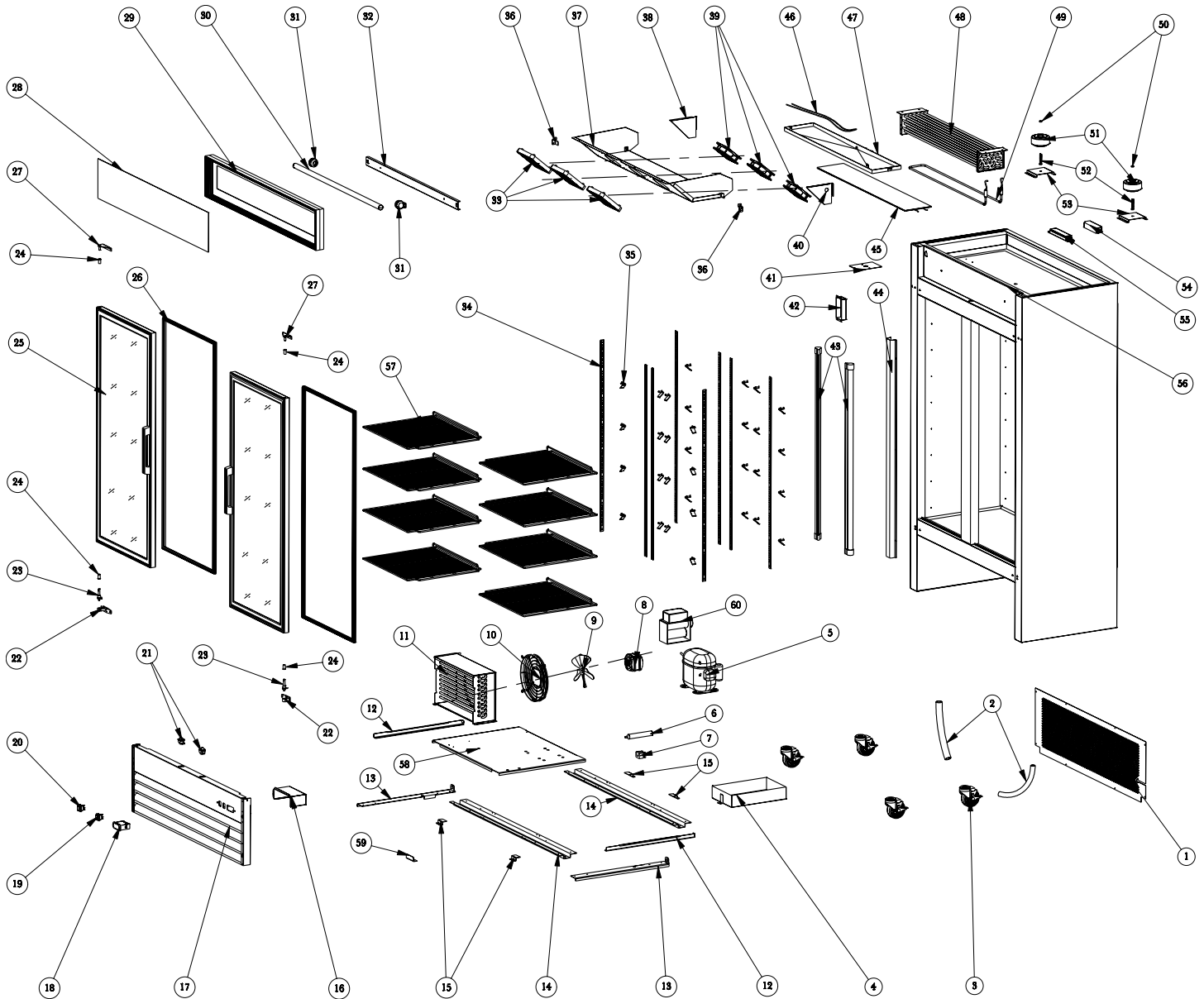
Model RE-CN-0052-HC 50052

Item No.	Description	Position	Item No.	Description	Position	Item No.	Description	Position
27085	Evaporator Fan Blade for SG1.9L3-HC	1	61994	Exterior Water Tray for SG1.9L3-HC	24	62008	Right Glass Door for SG1.9L3-HC	47
27087	Evaporator Fan Motor for SG1.9L3-HC	2	61995	Fixer of Exterior Water Tray for SG1.9L3-HC	25	62009	Bottom Panel of Electrical Box for SG1.9L3-HC	48
61985	Bottom Right Hinge for SG1.9L3-HC	3	61996	Installing Panel for SG1.9L3-HC	26	26481	Electrical Box for SG1.9L3-HC	49
61986	Bottom Left Hinge for SG1.9L3-HC	4	61997	Left Installing Panel Bracket for SG1.9L3-HC	27	62010	Front Grill for SG1.9L3-HC	50
26500	K Clip for SG1.9L3-HC	5	61998	Right Installing Panel Bracket for SG1.9L3-HC	28	62011	Castor Mounting Plate for SG1.9L3	51
26499	K Strip for SG1.9L3-HC	6	28311	Stock Block of Installing Panel for SG1.9L3-HC	29	62012	Evaporator for SG1.9L3-HC	52
64170	Compressor (R290) for SG1.9L3-HC	7	71839	Transformer of Temperature Display for SG1.9L3-HC	30	26467	Drain Hose for SG1.9L3-HC	53
26459	Nut of Bottom Drain Pipe Connector for SG1.9L3-HC	8	61999	Upper Left Hinge for SG1.9L3-HC	31	28257	Dry Filter for SG1.9L3-HC	54
26488	Axis of Door for SG1.9L3-HC	9	62000	Left Shelf for SG1.9L3-HC	32	26472	Fixer of Dry Filter for SG1.9L3	55
61987	Middle Shelf for SG1.9L3-HC	10	62001	Left Glass Door for SG1.9L3-HC	33	26462	Ballast Resistor of Top Light for SG1.9L3-HC	56
61988	Interior Water Tray for SG1.9L3-HC	11	26460	Bottom Drain Pipe Connector for SG1.9L3-HC	34	62013	Door Gasket for SG1.9L3-HC	57
26425	Condenser for SG1.9L3-HC	12	28238	Light Switch for SG1.9L3	35	26486	Door Switch for SG1.9L3-HC	58
26379	Condenser Fan Motor for SG1.9L3-HC	13	62002	Support Bracket of Machine Room for SG1.9L3-HC	36	62014	Evaporator Cover for SG1.9L3-HC	59
26331	Condenser Fan Blade for SG1.9L3-HC	14	62003	Right Link Plate of Castor Mounting Plate for SG1.9L3-HC	37	27086	Fan Mounting Bracket for SG1.9L3-HC	60
26427	Condenser Fan Cover for SG1.9L3-HC	15	62004	Left Link Plate of Castor Mounting Plate for SG1.9L3-HC	38	62015	Right Cover of Evaporator for SG1.9L3	61
26440	Castor with Brake for SG1.9L3-HC	16	27185	Digital Temperature Controller for SG1.9L3-HC	39	62016	Left Cover of Evaporator for SG1.9L3-HC	62
61989	Cabinet for SG1.9L3-HC	17	62017	Controller Panel for SG1.9L3-HC	40	27094	Cover of Evaporator Fan Motor for SG1.9L3-HC	63
61990	Upper Right Hinge for SG1.9L3-HC	18	27067	Temperature Show for SG1.9L3-HC	41	26192	Power Switch for SG1.9L3-HC	64
61991	Right Shelf for SG1.9L3-HC	19	28244	Light Outlet for SG1.9L3-HC	42	26495	Top Light For SG1.9L3-HC	65
26441	Castor with Brake for SG1.9L3-HC	20	62005	Mounting Plate of Interior Light for SG1.9L3-HC	43	26496	Top Light Outlet for SG1.9L3-HC	66
61992	Back Cover for SG1.9L3-HC	21	26463	Interior Light for SG1.9L3-HC	44	26497	Mounting Plate of Top Light for SG1.9L3-HC	67
61993	Return Pipe Cover for SG1.9L3-HC	22	62006	Light Box for SG1.9L3-HC	45			
26489	Axis Cover for SG1.9L3-HC	23	62007	Top Light Panel for SG1.9L3-HC	46			

Parts Breakdown

Model FR-CN-1250-HC 50031

Model FR-CN-1250-C 38025



Parts Breakdown

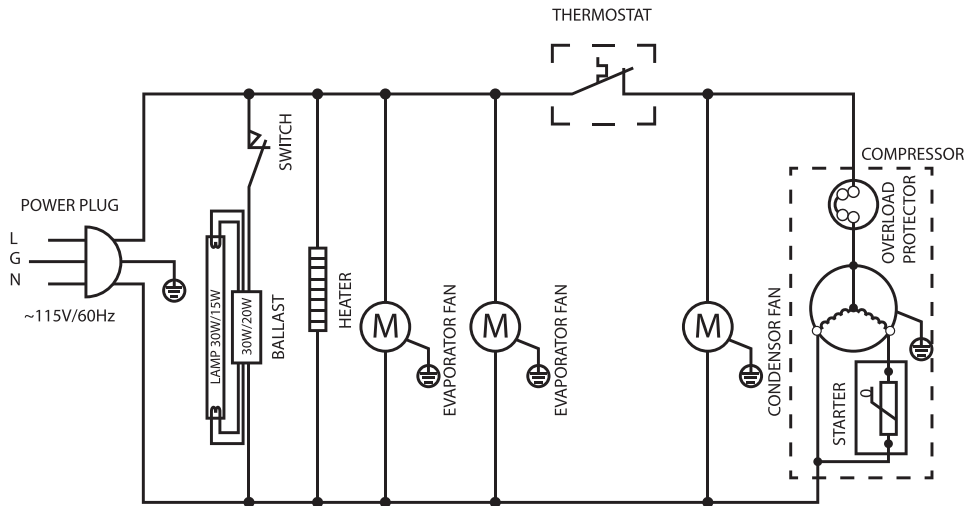
Model FR-CN-1250-HC 50031

Model FR-CN-1250-C 38025

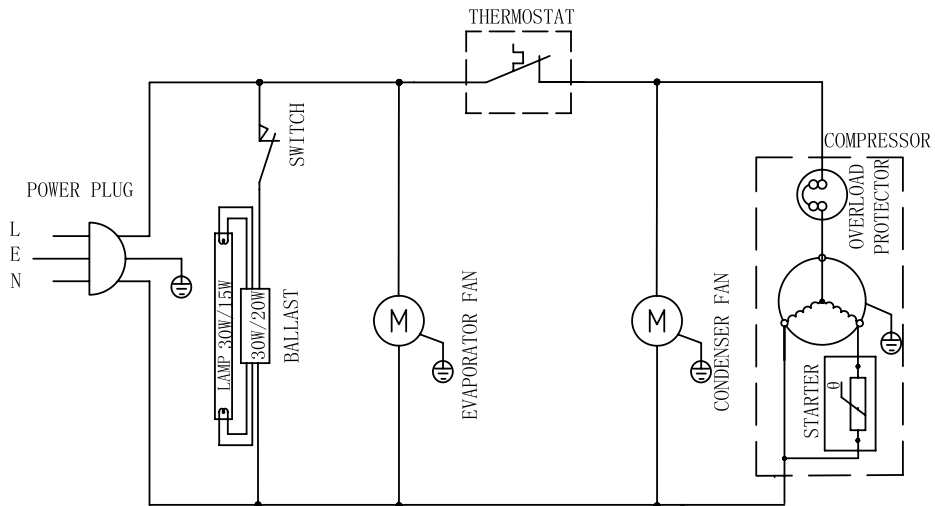
Item No.	Description	Position	Item No.	Description	Position	Item No.	Description	Position
26466	Back Cover for D768BM2F	1	26488	Down Hinge Axis for D768BM2F	23	26509	Return Pipe Cover for D768BM2F	44
26467	Drain-Water Hose for D768BM2F	2	26489	Axis Cover for D768BM2F	24	26510	Interior Water Tray Heater for D768BM2F	45
26468	Caster with Brake for D768BM2F	3	26490	Door Left for D768BM2F	25	26511	Water Drain Heater for D768BM2F	46
26469	Exterior Water-Tray for D768BM2F	4	28668	Door Right for D768BM2F	25	26512	Interior Water Tray for D768BM2F	47
64174	Compressor (R290) for D768BM2F	5	26491	Door Gasket for D768BM2F	26	26513	Evaporator for D768BM2F	48
26471	Dry Filter for D768BM2F	6	26492	Top Hinge (Left and Right) for D768BM2F	27	26514	Defrost Heater for D768BM2F	49
26472	Fixer for Dry Filter for D768BM2F	7	26493	Top Light Panel for D768BM2F	28	26515	Nut for D768BM2F	50
26473	Condenser Fan Motor for D768BM2F	8	26494	Light Frame for D768BM2F	29	26516	Transformer for Glass Door Heater for D768BM2F	51
26474	Blade of Condenser Fan Motor for D768BM2F	9	26495	Top Light for D768BM2F	30	26517	Bolt for D768BM2F	52
26475	Cover of Condenser Fan Motor for D768BM2F	10	26496	Light Outlet for D768BM2F	31	26518	Transformer Fix Panel for D768BM2F	53
26476	Condenser for D768BM2F	11	26497	Assemble Panel of Light for D768BM2F	32	26519	Ballast Resistor for LED Light for D768BM2F	54
26477	Track for Assembly Panel for D768BM2F	12	26498	Cover of Evaporator Fan Motor for D768BM2F	33	26520	Ballast Resistor for Top Light for D768BM2F	55
26478	Support Connector for D768BM2F	13	26499	Supporter for K Clip for D768BM2F	34	26521	Cabinet for D768BM2F	56
26479	Support Panel for Leg for D768BM2F	14	26884	K Clip for D768BM2F	35	26522	Shelf Left for D768BM2F	57
26480	Limiter of Assembly Panel for D768BM2F	15	26501	Fixer for Evaporator Cover for D768BM2F	36	39811	Shelf Right for D768BM2F	57
26481	Digital Cover for D768BM2F	16	26502	Evaporator Cover for D768BM2F	37	26523	Assembly Panel for D768BM2F	58
26482	Grill for D768BM2F	17	26503	Fan Motor Left Panel for D768BM2F	38	26524	Assembly Puller for D768BM2F	59
26483	Digital Temperature Controller for D768BM2F	18	26711	Evaporator Fan Motor for D768BM2F	39	26525	Compressor Starter for D768BM2F	60
26484	Light Switch for D768BM2F	19	26505	Fan Motor Right Panel for D768BM2F	40	31489	Press Switch for D768BM2F	61
26485	Power Switch for D768BM2F	20	26506	Wire Protector for D768BM2F	41	43982	Contact for D768BM2F	
26486	Door Switch for D768BM2F	21	26507	Cover of Wire Box for D768BM2F	42	24362	Spring Hinge for D768BM2F	
26487	Down Hinge for D768BM2F	22	26508	LED Light for D768BM2F	43	26514	Thermal Fuse for D768BM2F	

Electrical Schematics

Model RE-CN-0045-HC 50032

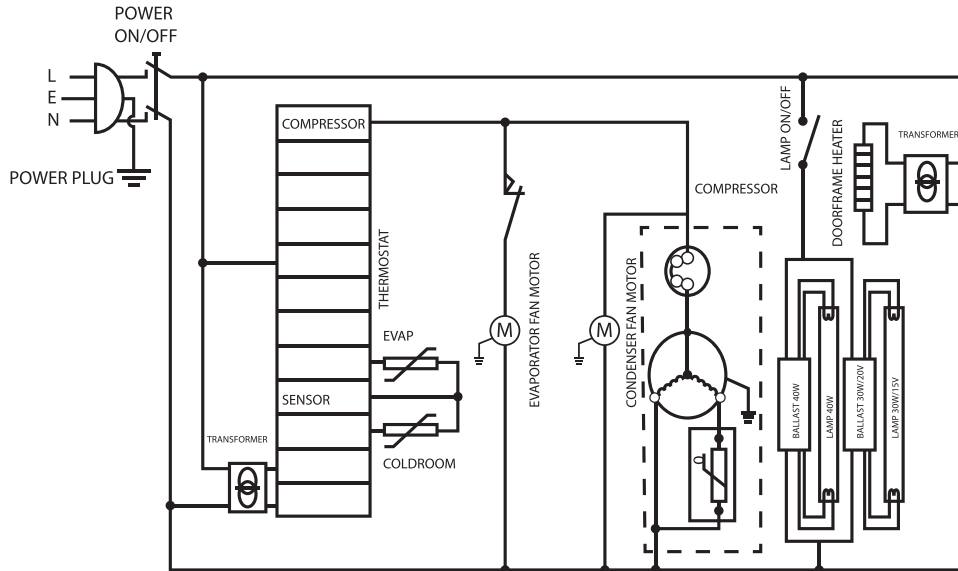


Model RE-CN-0009-HC 50033



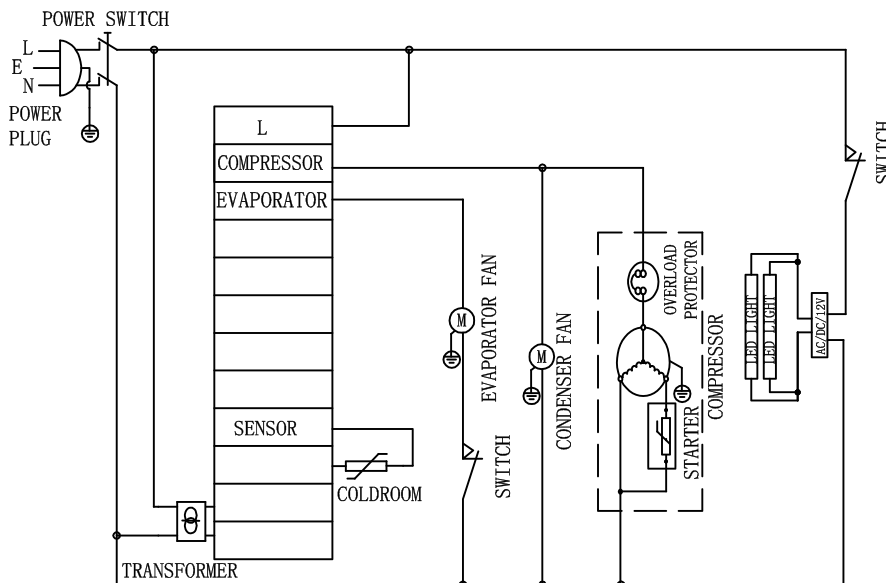
Electrical Schematics

Model RE-CN-0014-HC 50034



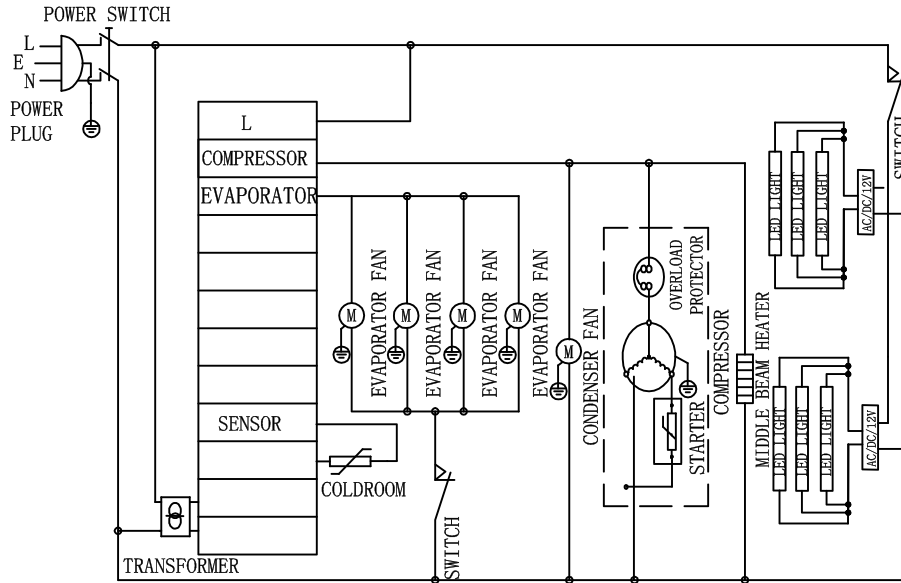
Model RE-CN-0023-HC 50036

Model RE-CN-0023-H 50037

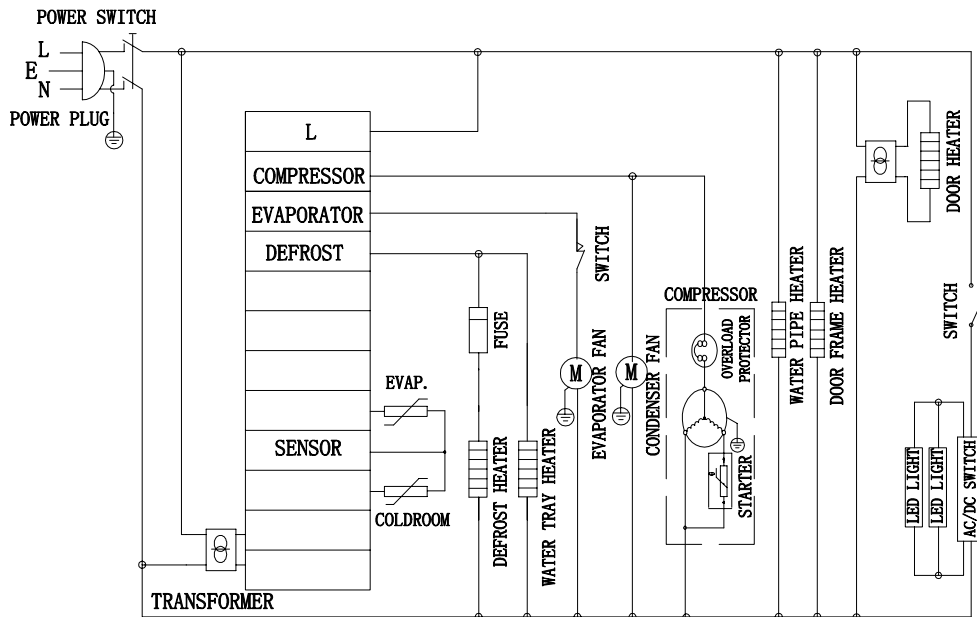


Electrical Schematics

Model RE-CN-0052-HC 50052

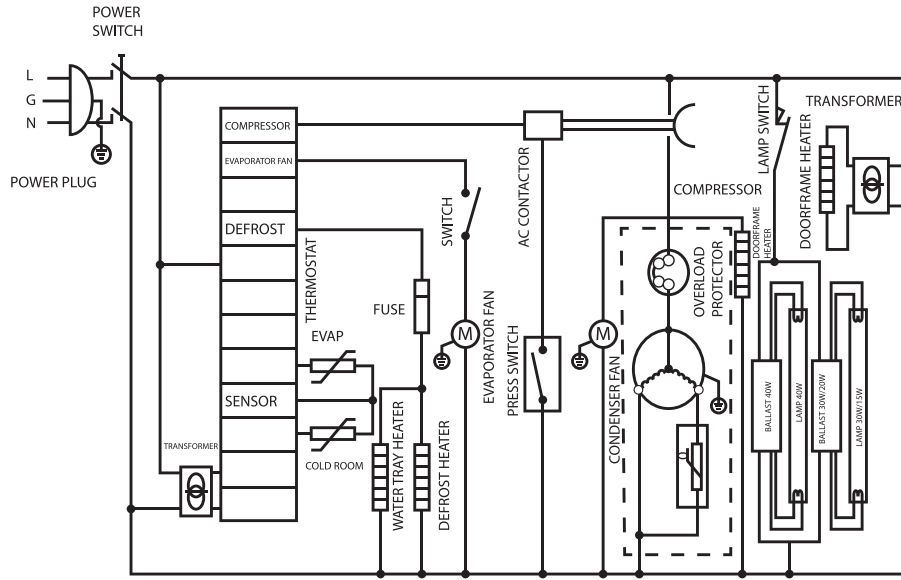


Model FR-CN-0790-HC 50030

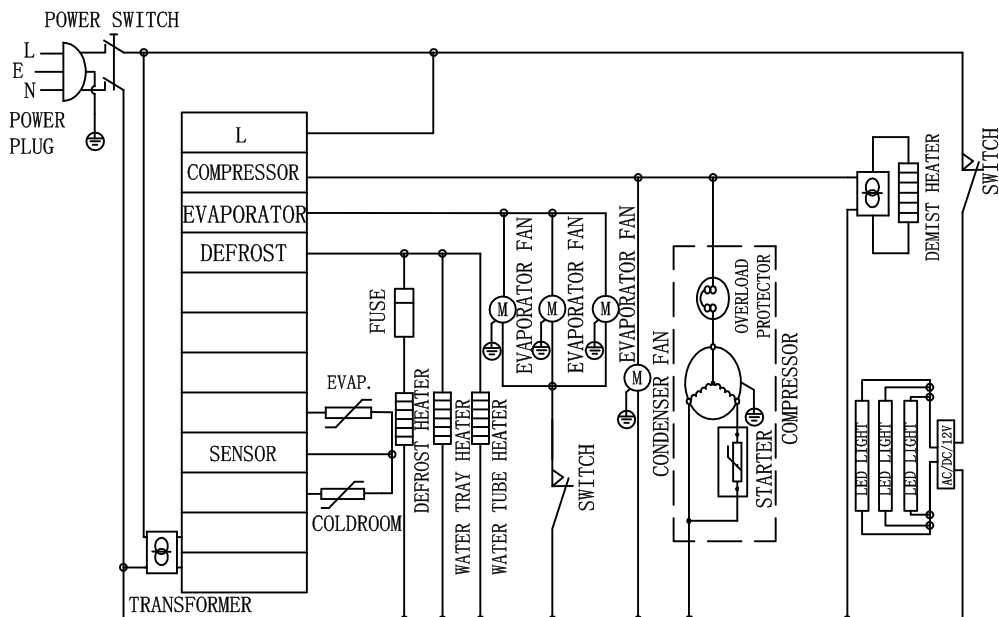


Electrical Schematics

Model FR-CN-1250-HC 50031



Model FR-CN-1250-C 38025





Warranty Registration

Thank you for purchasing an Omcan product. To register your warranty for this product, complete the information below, tear off the card at the perforation and then send to the address specified below. You can also register online by visiting:

Merci d'avoir acheté un produit Omcan. Pour enregistrer votre garantie pour ce produit, complétez les informations ci-dessous, détachez la carte au niveau de la perforation, puis l'envoyer à l'adresse spécifiée ci-dessous. Vous pouvez également vous inscrire en ligne en visitant:

Gracias por comprar un producto Omcan usted. Para registrar su garantía para este producto, complete la información a continuación, cortar la tarjeta en la perforación y luego enviarlo a la dirección indicada a continuación. También puede registrarse en línea en:

www.omcan.com/warrantyregistration.html

For mailing in Canada

Pour postale au Canada

Por correo en Canadá

OMCAN

PRODUCT WARRANTY REGISTRATION

3115 Pepper Mill Court,

Mississauga, Ontario

Canada, L5L 4X5

For mailing in the US

Pour diffusion aux États-Unis

Por correo en los EE.UU.

OMCAN

PRODUCT WARRANTY REGISTRATION

4450 Witmer Industrial Estates, Unit 4,

Niagara Falls, New York

USA, 14305

or email to: service@omcan.com



Purchaser's Information

Name: _____

Address: _____

City: _____ Province or State: _____ Postal or Zip: _____

Country: _____

Dealer from which Purchased: _____

Dealer City: _____ Dealer Province or State: _____

Invoice: _____

Model Name: _____ Model Number: _____

Machine Description: _____

Date of Purchase (MM/DD/YYYY): _____

Would you like to extend the warranty? Yes No

Company Name: _____

Telephone: _____

Email Address: _____

Type of Company:

Restaurant Bakery Deli

Butcher Supermarket Caterer

Institution (specify): _____

Other (specify): _____

Serial Number: _____

Date of Installation (MM/DD/YYYY): _____

Thank you for choosing Omcan | Merci d'avoir choisi Omcan | Gracias por elegir Omcan



Since 1951 Omcan has grown to become a leading distributor of equipment and supplies to the North American food service industry. Our success over these many years can be attributed to our commitment to strengthen and develop new and existing relationships with our valued customers and manufacturers. Today with partners in North America, Europe, Asia and South America, we continually work to improve and grow the company. We strive to offer customers exceptional value through our qualified local sales and service representatives who provide convenient access to over 3, 500 globally sourced products.

Depuis 1951 Omcan a grandi pour devenir un des “leaders” de la distribution des équipements et matériel pour l’industrie des services alimentaires en Amérique du Nord. Notre succès au cours de ces nombreuses années peut être attribué à notre engagement à renforcer et à développer de nouvelles et existantes relations avec nos clients et les fabricants de valeur. Aujourd’hui avec des partenaires en Amérique du Nord, Europe, Asie et Amérique du Sud, nous travaillons continuellement à améliorer et développer l’entreprise. Nous nous efforçons d’offrir à nos clients une valeur exceptionnelle grâce à nos ventes locales qualifiées et des représentants de service qui offrent un accès facile à plus de 3500 produits provenant du monde entier.

Desde 1951 Omcan ha crecido hasta convertirse en un líder en la distribución de equipos y suministros de alimentos en América del Norte industria de servicios. Nuestro éxito en estos años se puede atribuir a nuestro compromiso de fortalecer y desarrollar nuevas relaciones existentes con nuestros valiosos clientes y fabricantes. Hoy con socios de América del Norte, Europa, Asia y América del Sur, que trabajan continuamente para mejorar y crecer la empresa. Nos esforzamos por ofrecer a nuestros clientes valor excepcional a través de nuestro local de ventas y representantes de los servicios que proporcionan un fácil acceso a más de 3, 500 productos con origen a nivel mundial.

