



Wine Coolers

*Models WC-CN-0181-D, 0192-S, 0040-D, 0051-S
Items 45258, 45259, 45260, 45261*
Instruction Manual



Revised - 02/20/2019



Toll Free: 1-800-465-0234
Fax: 905-607-0234
Email: service@omcan.com
www.omcan.com

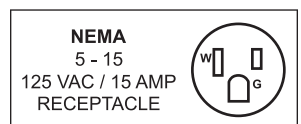


Table of Contents

Model WC-CN-0181-D / Model WC-CN-0192-S
Model WC-CN-0040-D / Model WC-CN-0051-S

Section	Page
General Information -----	3 - 4
Safety and Warranty -----	4 - 5
Technical Specifications -----	6
Installation -----	6 - 8
Operation -----	9 - 10
Maintenance -----	10
Troubleshooting -----	10 - 11
Parts Breakdown -----	12 - 19
Electrical Schematics -----	20 - 23
Notes -----	24 - 26
Warranty Registration -----	27



General Information

Omcan Manufacturing and Distributing Company Inc., Food Machinery of America, Inc. dba Omcan and Omcan Inc. are not responsible for any harm or injury caused due to any person's improper or negligent use of this equipment. The product shall only be operated by someone over the age of 18, of sound mind, and not under the influence of any drugs or alcohol, who has been trained in the correct operation of this machine, and is wearing authorized, proper safety clothing. Any modification to the machine voids any warranty, and may cause harm to individuals using the machine or in the vicinity of the machine while in operation.

CHECK PACKAGE UPON ARRIVAL

Upon receipt of an Omcan shipment please inspect for external damage. If no damage is evident on the external packaging, open carton to ensure all ordered items are within the box, and there is no concealed damage to the machine. If the package has suffered rough handling, bumps or damage (visible or concealed), please note it on the bill of lading before accepting the delivery and contact Omcan within 24 hours, so we may initiate a claim with the carrier. A detailed report on the extent of the damage caused to the machine must be filled out within three days, from the delivery date shown in the shipping documents. Omcan has no recourse for damaged products that were shipped collect or third party.

Before operating any equipment, always read and familiarize yourself with all operation and safety instructions.

Omcan would like to thank you for purchasing this machine. It's of the utmost importance to save these instructions for future reference. Also save the original box and packaging for shipping the equipment if servicing or returning of the machine is required.

Omcan Fabrication et distribution Compañie Limité et Food Machinery d'Amerique, dba Omcan et Omcan Inc. ne sont pas responsables de tout dommage ou blessure causé du fait que toute personne ait utilisé cet équipement de façon irrégulière. Le produit ne doit être exploité que par quelqu'un de plus de 18 ans, saine d'esprit, et pas sous l'influence d'une drogue ou d'acohol, qui a été formé pour utiliser cette machine correctement, et est vêtu de vêtements de sécurité approprié. Toute modification de la machine annule toute garantie, et peut causer un préjudice à des personnes utilisant la machine ou des personnes à proximité de la machine pendant son fonctionnement.

VÉRIFIEZ LE COLIS DÈS RÉCEPTION

Dès réception d'une expédition d'Omcan veuillez inspecter pour dommages externes. Si aucun dommage n'est visible sur l'emballage externe, ouvrez le carton afin de s'assurer que tous les éléments commandés sont dans la boîte, et il n'y a aucun dommage dissimulé à la machine. Si le colis n'a subi aucune mauvaises manipulations, de bosses ou de dommages (visible ou cachée), notez-le sur le bond de livraison avant d'accepter la livraison et contactez Omcan dans les 24 heures qui suivent, pour que nous puissions engager une réclamation auprès du transporteur. Un rapport détaillé sur l'étendue des dommages causés à la machine doit être rempli dans un délai de trois jours, à compter de la date de livraison indiquée dans les documents d'expédition. Omcan n'a aucun droit de recours pour les produits endommagés qui ont été expédiées ou cueilli par un tiers transporteur.

General Information

Avant d'utiliser n'importe quel équipement, toujours lire et vous familiariser avec toutes les opérations et les consignes de sécurité.

Omcan voudrais vous remercier d'avoir choisi cette machine. Il est primordial de conserver ces instructions pour une référence ultérieure. Également conservez la boîte originale et l'emballage pour l'expédition de l'équipement si l'entretien ou le retour de la machine est nécessaire.

Omcan Empresa De Fabricacion Y Distribucion Inc. Y Maquinaria De Alimentos De America, Inc. dba Omcan y Omcan Inc. no son responsables de ningun daño o perjuicio causado por cualquier persona inadecuada o el uso descuidado de este equipo. El producto solo podra ser operado por una persona mayor de 18 años, en su sano juicio y no bajo alguna influencia de droga o alcohol, y que este ha sido entrenado en el correcto funcionamiento de esta máquina, y ésta usando ropa apropiada y autorizada. Cualquier modificación a la máquina anula la garantía y puede causar daños a las personas usando la máquina mientras esta en el funcionamiento.

REVISE EL PAQUETE A SU LLEGADA

Tras la recepcion de un envio Omcan favor inspeccionar daños externos. Si no hay daños evidentes en el empaque exterior, Habra el carton para asegurarse que todos los articulos solicitados estén dentro de la caja y no encuentre daños ocultos en la máquina. Si el paquete ha sufrido un manejo de poco cuidado, golpes o daños (visible o oculto) por favor anote en la factura antes de aceptar la entrega y contacte Omcan dentro de las 24 horas, de modo que podamos iniciar una reclamación con la compañía. Un informe detallado sobre los daños causados a la máquina debe ser llenado en el plazo de tres días, desde la fecha de entrega que se muestra en los documentos de envío. Omcan no tiene ningun recurso por productos dañados que se enviaron a recoger por terceros.

Antes de utilizar cualquier equipo, siempre leer y familiarizarse con todas las instrucciones de operación y seguridad.

Omcan quisiera darles las gracias por la compra de esta máquina. Es de la máxima importancia para guardar estas instrucciones para referencias en el futuro. También guarde la caja original y el embalaje para envío del equipo si el mantenimiento o la devolución de la máquina es necesaria.

Safety and Warranty

Basic precautions when using:

1. Only use your wine cabinet for intended purposes, as described in this guide.
2. Never unplug the wine cabinet by pulling out the power cord; grip the plug firmly and pull straight out to remove from wall socket.
3. Immediately repair or replace any worn or damaged cord; never use a cord that is split or which shows signs of wear along its length or on its ends.
4. This appliance is not intended for use by people (including children) with reduced physical, sensory, or



Safety and Warranty

mental capabilities, or lack of experience and knowledge unless they have been given supervision or instruction concerning use of the appliance by a person responsible for their safety.

5. Children should be supervised to ensure that they do not play with the appliance. Do not allow children to climb on, sit on or stand on the wine cabinet, nor hang from its shelves. They could damage the cabinet.
6. Do not use an extension cord. Do not operate this device if its power cable or plug is damaged if it does not work properly or if it is damaged or has work properly or if it is damaged or has been dropped. If the power cable is damaged, it will need to be replaced by the manufacturer or his service agency or a similar qualified person to avoid any danger.
7. Do not place other appliance inside the cabinet.

WARNING: Refrigerant and foaming material is flammable. Please take care when going through installation, operation, and maintenance.

1 YEAR PARTS AND LABOUR WARRANTY

Within the warranty period, contact Omcan Inc. at 1-800-465-0234 to schedule an Omcan authorized service technician to repair the equipment locally.

Unauthorized maintenance will void the warranty. Warranty covers electrical and part failures, not improper use.

Please see <https://omcan.com/disclaimer> for complete info.

WARNING:

The packaging components are classified as normal solid urban waste and can therefore be disposed of without difficulty.

In any case, for suitable recycling, we suggest disposing of the products separately (differentiated waste) according to the current norms.

DO NOT DISCARD ANY PACKAGING MATERIALS IN THE ENVIRONMENT!

Technical Specifications

Model	WC-CN-0181-D	WC-CN-0192-S
Temperature Range	5°C - 20°C / 41°F - 68°F	
Inner Humidity	40% - 60%	
Bottle Capacity	181	192
Rated Current (A)	1.4	
Refrigerant	R600a	
Electrical	115V / 60Hz	
Unit Dimensions	27.6" x 23.4" x 73.4" / 700 x 595 x 1865mm	
Net Weight	224.7 lbs. / 101.9 kg.	228 lbs. / 103.4 kg.
Gross Weight	237 lbs. / 107.5 kg.	240 lbs. / 108.9 kg.
Packaging Dimensions	30" x 26" x 80.3" / 762 x 660 x 2040mm	
Item Number	45258	45259

Model	WC-CN-0040-D	WC-CN-0051-S
Temperature Range	5°C - 20°C / 41°F - 68°F	
Inner Humidity	40% - 60%	
Bottle Capacity	40	51
Rated Current (A)	0.9	
Refrigerant	R600a	
Electrical	115V / 60Hz	
Unit Dimensions	22.6" x 23.4" x 32.3" / 574 x 595 x 820mm	
Net Weight	98 lbs. / 44.5 kg.	100 lbs. / 45.4 kg.
Gross Weight	110 lbs. / 49.9 kg.	110.4 lbs. / 50.1 kg.
Packaging Dimensions	25.2" x 26" x 35.8" 640 x 660 x 910mm	25.2" x 26" x 35.8" 640 x 660 x 910mm
Item Number	45260	45261

Installation

WINE CABINET INSTALLATION

1. When you receive the cabinet, make sure when you unpack it there is no flaws in its external appearance (from shocks, deformation, etc.)
2. Open the door and check all interior fittings and supplied items if they are all complete (shelves, instruction,

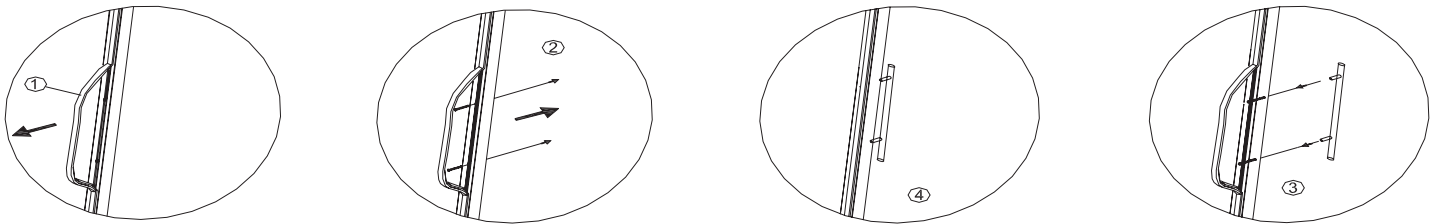
Installation

control panel, etc.) Please install it according to the following points if the shelves or shelf brackets fall off during transit.

3. After checking and there's no problem, then please carry to the final place which should be taken cared as follows:
 - a. Leaving space of minimum 5 cm between your wine cabinet and left and right wall; at least 8 cm between back of cabinet and the wall.
 - b. Position the wine cabinet on a flat level surface; if not, adjust the feet of wine cabinet to keep level.
4. Away from sources of heat and high humidity areas (laundry room and bathroom, etc.)
5. Do not tilt it at an angle of more than 45 / 113 degrees when moving the cabinet. Allow a minimum 10-minute interval between transit and re-starting.
6. Make sure the ventilation is free if you wish to install your cabinet into a worktable; otherwise, it will reduce the effect of usage.
7. Please check the plug and cable before you connect the power.

INSTALLING THE HANDLE

Install the handle according to the following four steps:



1. Move door seal out in the place of installing the handle.
2. Take screws from manual bag and put it in the appointed place.
3. Fasten door handle by screw driver.
4. Refit the door seal to the relevant position.

WOOD SHELF CHANGING

Once wood shelf needs to be changed, please check which kind of slider and which one is used.

If slider is (A), take out the shelf only and change another new shelf - it will be okay. Please make sure the wood hole needs to match the slider hook.



If slider is (B):

1. Unscrew the wood shelf from slider.
2. Take out the old wood shelf and change new one.
3. Screw the wood shelf again from shelf bottom as previous then it is okay.



Installation

INSTALLING OR REMOVING THE DOOR

Before beginning, please remove the power plug from the socket, follow the below images (Pictures A-H) to remove the door.

In order to reassemble the door, follow the below images in reverse order.



A

B

C



D

E

F



G





H

TEMPERATURE SETTING

- The item will be used under the room temperature ranging from 16°C to 32°C (61°F to 90°F).
- Temperature setting range of cabinet is 5°C to 20°C (41°F to 68°F). Customers can reset the temperature according to their actual demands. Both the wine cabinet and the indicator will turn on until the desired temperature is achieved. Single Temperature Zone is the same operation.
- Pushing the temperature key up and down for 5 seconds, then temperature display mode will be exchange between °C and °F.
- The temperature of the top compartment must be set lower than the bottom compartment, or at the same temperature as the bottom compartment, but it should not set at temperature higher than the bottom compartment.







CONTROL PANEL FOR SINGLE ZONE





-  ON/OFF of the whole system.
-  ON/OFF of Inside Cabinet LED light.
-  Temperature Up setting.
-  Temperature Down setting.

CONTROL PANEL FOR DUAL ZONE

Upper Control Panel

-  ON/OFF of the up zone system.
-  ON/OFF of Inside Cabinet LED light.
-  Temperature Up setting.
-  Temperature Down setting.

Down Control Panel

-  ON/OFF of the down zone system.
-  ON/OFF of Inside Cabinet LED light.
-  Temperature Up setting.
-  Temperature Down setting.

LOADING AND STORAGE OF WINE BOTTLE

Bottle Loading Method

- Wooden shelf capacity: 5, 9 or 11 bottles per shelf.
- Bottom shelf capacity: 8 or 12 bottles per shelf.
- Maintain a minimum 20 mm between bottle and back plate.
- Ensure storage bottle bottom dia. 78 mm and 300 mm height; otherwise, less bottle loading.

Operation

Ensure bottle and shelf safety

- Spread your bottles out as evenly as possible over the shelves, so weight is not concentrated in one point; and make sure your bottles will not touch the back of the cabinet.
- Make sure bottles are not grouped together at the top or bottom of the cabinet.
- Following loading instructions provided, according to the type of storage fixtures with which your cabinet is equipped and never stack bottles on a sliding shelf.
- Due to humidity which will be fluctuated based on room humidity and temperature, please make special film to pack before storage inside cabinet, which will ensure the label of bottle could not be damage.

Maintenance

In order to ensure best performance and long-lasting reliable working item, please follow the simple maintenance and cleaning operation as follows:

- Make sure the power cord is unplugged before cleaning the back of your cabinet or before moving it.
- Clean the inside of your cabinet thoroughly once a year after unplugging and unloading it. Use water and a mild cleaning item then rinse carefully.
- To assure that your wine cooler provides a long-lasting reliable performance, you should check it regularly and inform your dealer if anything unusual is found.

Troubleshooting

PROBLEM	SOLUTION
Not working.	Check if it is plugged in or not.
	Fuse break.
	No power.
Cooling problem.	Heat source near the item.
	Ventilation not well.
	Door is not close well or the door is open for so long.
	There is a door sealing problem or deformation.
	Bottles are loading too much in same shelf.
	The air inlet or outlet is blocked.
	Control setting problem.
Ventilation space in the right and left casing is not enough.	
Noisy.	Wine cabinet place is not flat.
	Item is touching the wall.
	Some parts are loose or taken off.

Troubleshooting

If problem still occurs after checking above, please try to contact service provider or dealer.

Note: Normal operation for following circumstances:

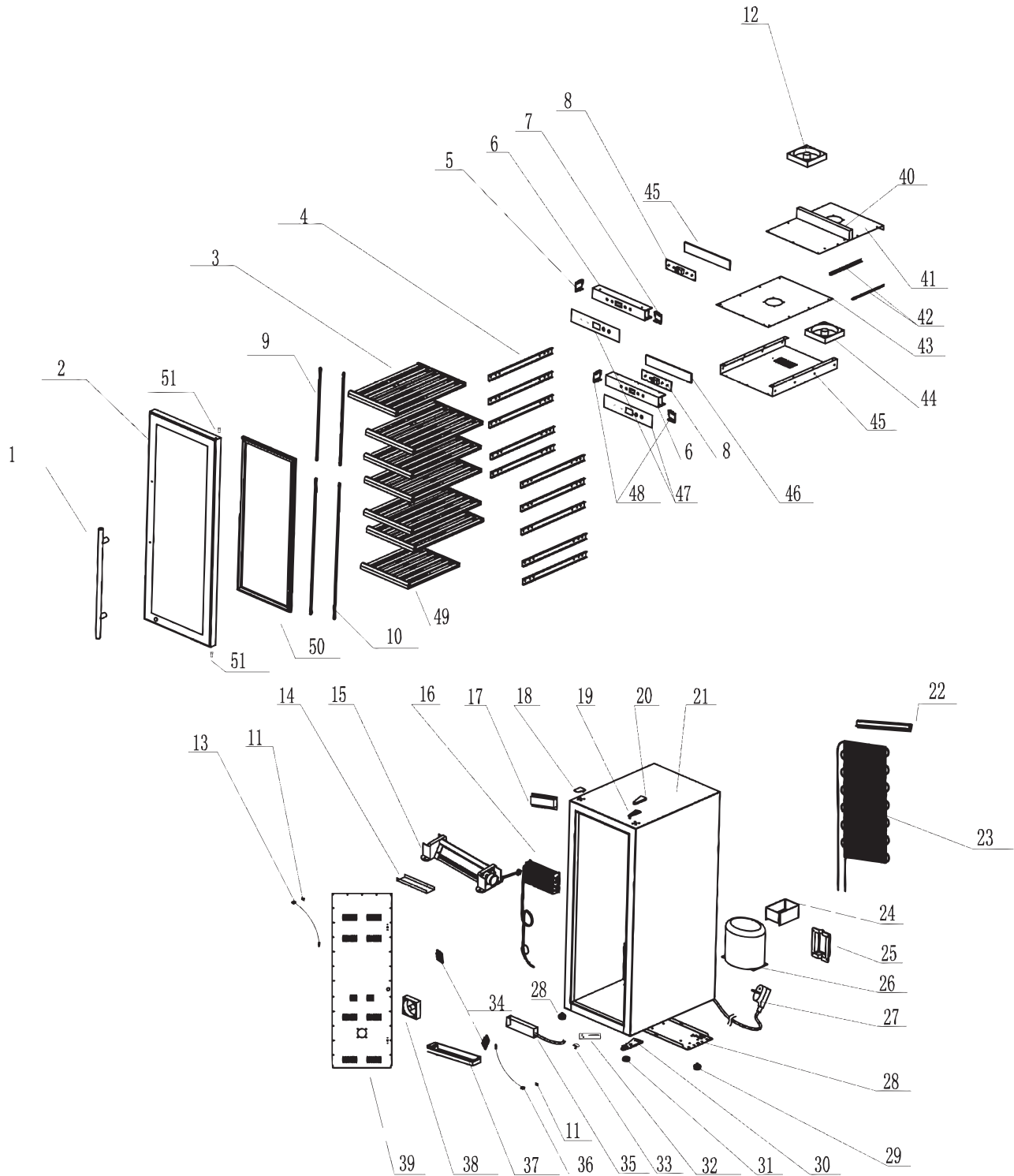
1. Compressor won't start:
Compressor will not start if room temperature is lower than desired temperature, but the cabinet will still work with heater inside until desired temperature is achieved.
2. Compressor re-start:
Compressor will stop working when cooling system in the cabinet reaches presetting temperature and restarts working until the desired temperature is achieved. Allow a minimum 5 minute interval before re-starting.
3. Dew on the surface of cabinet:
The surface of the wine cabinet, especially the glass door, appears to have some frost if the cabinet is in a damp room. This is due to the moisture in the air coming into contact with the cabinet. Please wipe it away with dry cloth.
4. Liquid sound:
 - The sound of the compressor when it starts or stops working.
 - The flowing sound of refrigerant in the refrigeration system.
 - The evaporating sound of refrigerant in the evaporator.
5. Condensation formed inside the cabinet:
Under the environment with high level of humidity or the door of wine cabinet has been left open for a long period of time (or opened frequently), there are much condensation - please wipe off the water from the door and walls, and leave the door closed as long as possible.
6. Heat function on bottom zone:
Heat function on bottom zone will automatically be on when:
 - Setting temperature is upper than room temperature.
 - Inside bottom temperature is lower than setting temperature.
7. Indicator Light:
When temperature inside cabinet is out of range of setting temperature, both up and down indicator lights will be on. Once temperature reaches setting temperature, the light will automatically turn off.

REFERENCE

Item Number	Model Number	Description	Manufacturer Model Number
45258	WC-CN-0181-D	Wine Cooler 181 Bottle Capacity Dual Zone 115V/60Hz cSGSus	SW-180
45259	WC-CN-0192-S	Wine Cooler 192 Bottle Capacity Single Zone 115V/60Hz cSGSus	SW-192
45260	WC-CN-0040-D	Wine Cooler 40 Bottle Capacity Dual Zone 115V/60Hz cSGSus	SW-40
45261	WC-CN-0051-S	Wine Cooler 51 Bottle Capacity Single Zone 115V/60Hz cSGSus	SW-51

Parts Breakdown

Model WC-CN-0181-D 45258



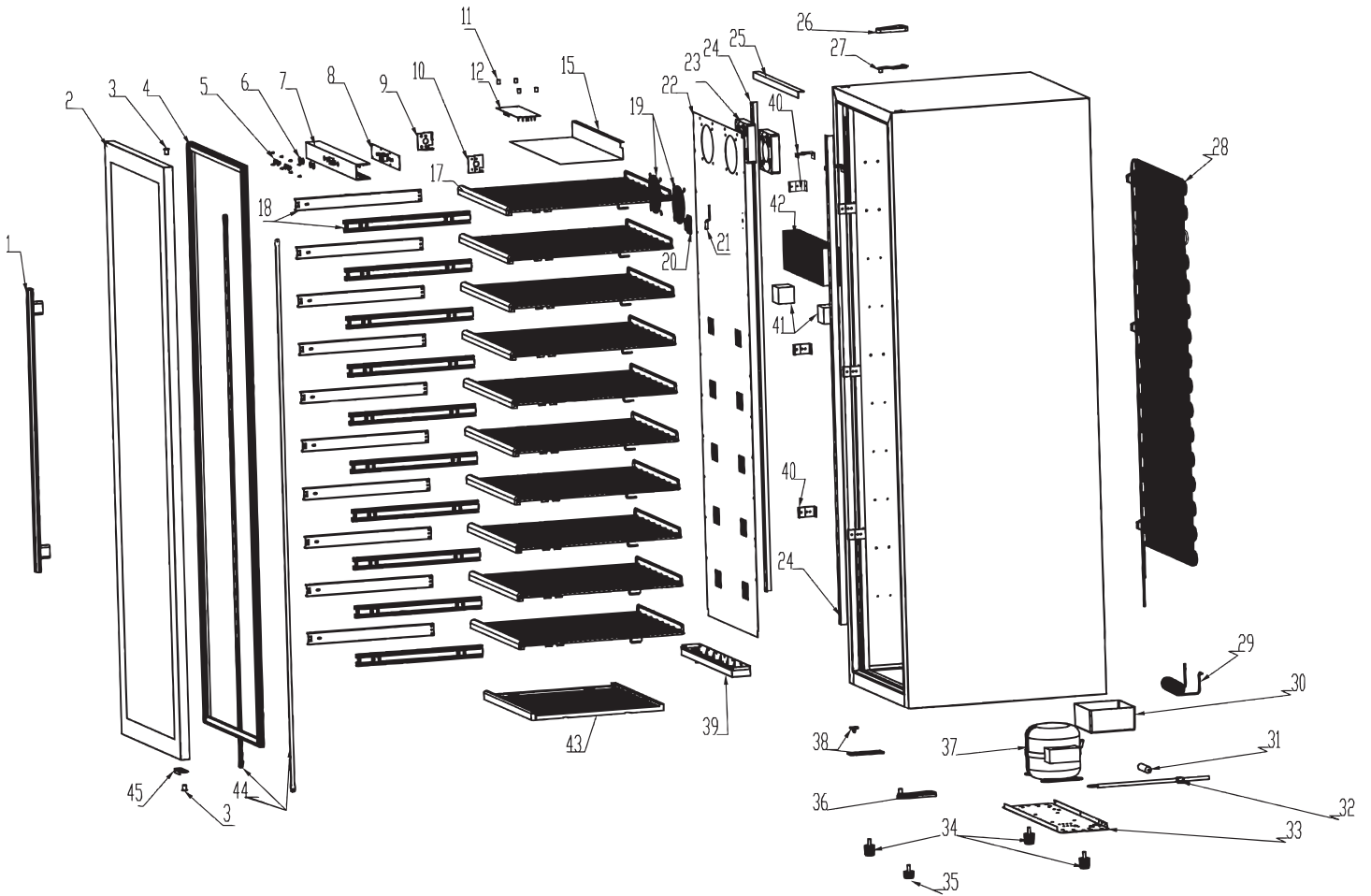
Parts Breakdown

Model WC-CN-0181-D 45258

Item No.	Description	Position	Item No.	Description	Position	Item No.	Description	Position
79668	Handle for SW-180	1	79687	Hinge Cover for SW-180	20	79701	8025 Fan for SW-180	38
79669	Door Assemble for SW-180	2	79688	Casing for SW-180	21	68802	Back Ventilation Board for SW-180	39
79671	Upper Wood Shelf for SW-180	3	68799	Condenser Strip for SW-180	22	79703	Sealing (Froming) for SW-180	40
79672	Sliding Trace for SW-180	4	79690	Condenser for SW-180	23	79704	Top Ventilation Board for SW-180	41
79676	Fixation Electrical Box for SW-180	5, 7	79691	Water Tray for SW-180	24	79705	Fixed Plate for SW-180	42
79674	Control Box for SW-180	6	79692	Hidden Line Box for SW-180	25	79706	Up Cover (Mid. Board) for SW-180	43
79675	Display PCB for SW-180	8	79693	Compressor for SW-180	26	79701	8025 Fan for SW-180	44
68795	Upper Zone LED Light Strip for SW-180	9	79694	Power Supply Cord for SW-180	27	79707	Bottom Cover for SW-180	45
68796	Lower Zone LED Light Strip for SW-180	10	79695	Compressor Support Plate for SW-180	28	79677	Control Box PVC for SW-180	46
68797	Sensor Cap Foam for SW-180	11	79696	Front Foot for SW-180	29	79710	Control Panel Sticker for SW-180	47
79681	Fan-1 for SW-180	12	79697	Down Hinge for SW-180	30	79708	Fixation Electrical Box (Down) for SW-180	48
79682	Up-Sensor for SW-180	13	79696	Front Foot for SW-180	31	79709	Bottom Wood Shelf for SW-180	49
79683	Sealing PVC for SW-180	14	68800	Lock Bracket for SW-180	32	79670	Door Gasket for SW-180	50
68798	Motor General Assembly Drawing for SW-180	15	68801	Plastic Cushion for SW-180	33	79712	Shaft Sleeve for SW-180	51
79684	Evaporator for SW-180	16	79700	Sensor Cap for SW-180	34	79713	Carton for SW-180	52
79689	Electric Board for SW-180	17	79698	Heating PTC for SW-180	35	68725	Slanted Shelf for SW-180	53
79685	Top Cover for SW-180	18	79699	Down Sensor for SW-180	36	68726	Starting Components for the Compressor LG MA53LBCG for SW-180	54
79686	Upper Hinge for SW-180	19	79711	Watershed Plate for SW-180	37			

Parts Breakdown

Model WC-CN-0192-S 45259



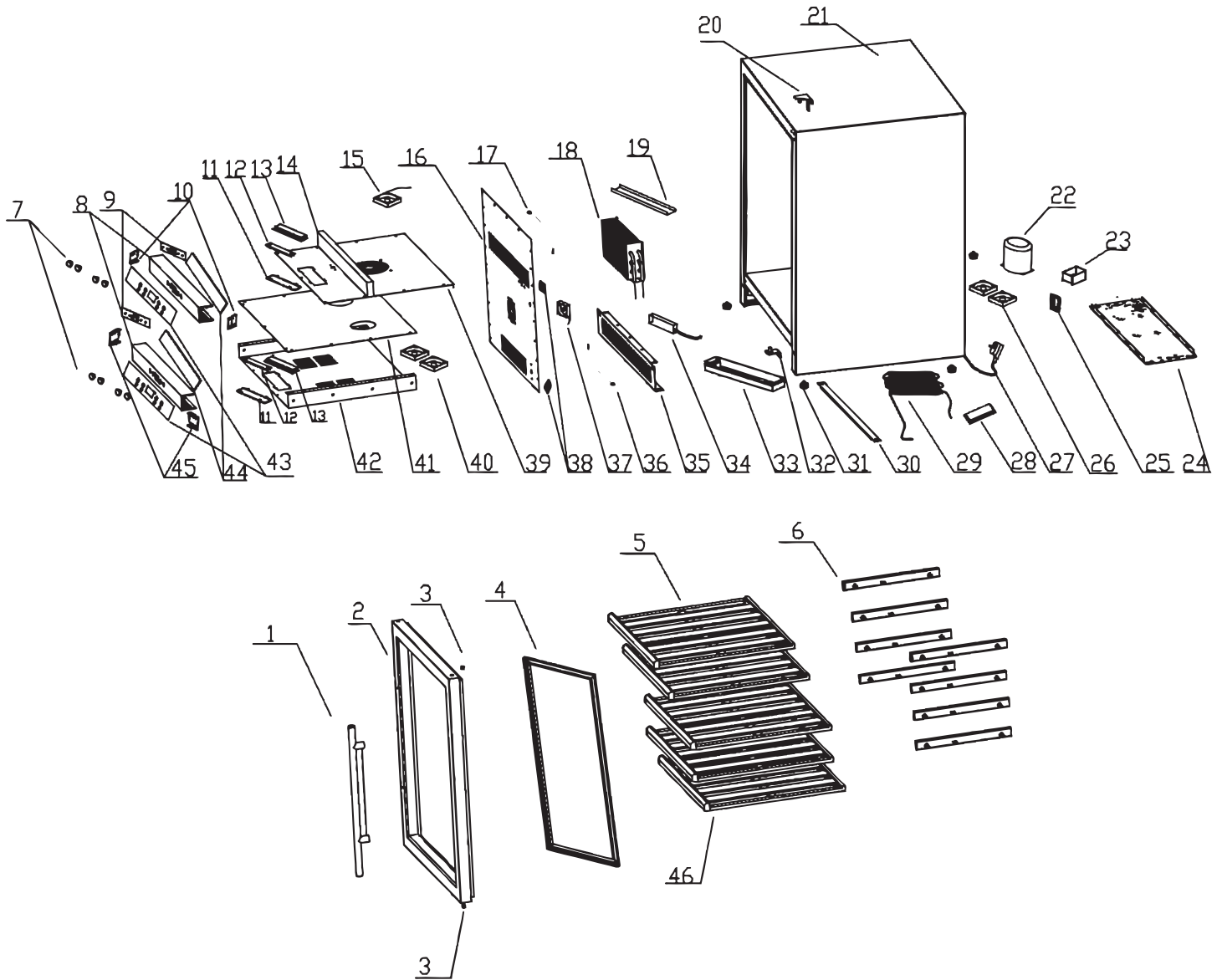
Parts Breakdown

Model WC-CN-0192-S 45259

Item No.	Description	Position	Item No.	Description	Position	Item No.	Description	Position
79668	Handle for SW-192	1	68732	Fan Cover for SW-192	19	79696	20mm Adjustable Foot for SW-192	34
79669	Door Assemble for SW-192	2	79700	Sensor Cap for SW-192	20	79696	15mm Adjustable Foot for SW-192	35
79712	Shaft Sleeve for SW-192	3	79682	Sensor for SW-192	21	79697	Down Hinge for SW-192	36
79670	Door Gasket for SW-192	4	79702	Back Ventilation Board for SW-192	22	79693	Compressor for SW-192	37
79673	Button for SW-192	5	79681	12025 Fan for SW-192	23	68737	Lock Bracket for SW-192	38
68727	Button Nut for SW-192	6	68733	Back Ventilation Board Holder for SW-192	24	79711	Watershed Plate for SW-192	39
79674	Electric Box for SW-192	7	68734	Back Ventilation Board Holder - Up for SW-192	25	68738	Back Ventilation Board Holder for SW-192	40
79675	Display PCB for SW-192	8	79687	Hinge Cover for SW-192	26	79683	Evaporator's Sealing for SW-192	41
68728	Left Support Frame of Upper Electric Box for SW-192	9	79686	Upper Hinge for SW-192	27	79684	Evaporator for SW-192	42
68729	Right Support Frame of Upper Electric Box for SW-192	10	79690	Condenser for SW-192	28	79709	Bottom Wood Shelf for SW-192	43
68730	Holder for SW-192	11	68735	Exhaust Pipe for SW-192	29	79679	LED Light Strip for SW-192	44
79689	Electric Board for SW-192	12	79691	Water Tray for SW-192	30	68739	Door Limit Block for SW-192	45
79704	Top Ventilation Board for SW-192	15	68736	Dry Filter for SW-192	31	79710	Control Panel Sticker for SW-192	46
68731	Upper Wire Metal Shelf for SW-192	17	79694	Power Supply Cord for SW-192	32			
79672	Sliding Trace for SW-192	18	79695	Compressor Support Plate for SW-192	33			

Parts Breakdown

Model WC-CN-0040-D 45260



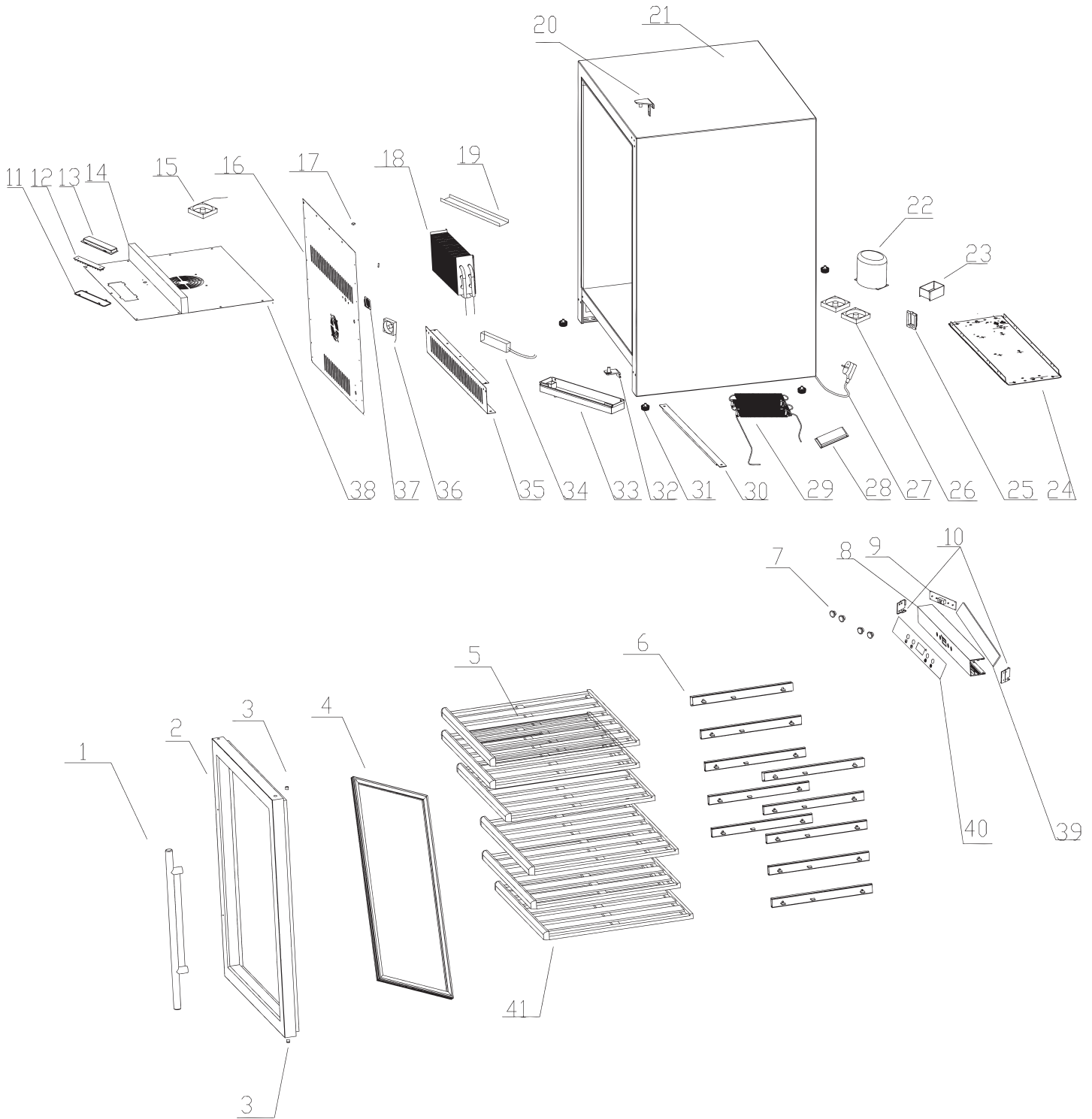
Parts Breakdown

Model WC-CN-0040-D 45260

Item No.	Description	Position	Item No.	Description	Position	Item No.	Description	Position
79714	Handle for SW-40	1	79730	Up-Sensor for SW-40	17	79711	Watershed Plate for SW-40	33
79715	Door Assemble for SW-40	2	79731	Evaporator for SW-40	18	79698	Heating PTC for SW-40	34
79712	Shaft Sleeve for SW-40	3	79732	Sealing PVC for SW-40	19	79748	Head Board for SW-40	35
79717	Door Gasket for SW-40	4	79686	Upper Hinge for SW-40	20	79749	Down Sensor for SW-40	36
79718	Upper Wood Shelf for SW-40	5	79734	Casing for SW-40	21	79701	8025 Fan-1 for SW-40	37
79719	Sliding Trace for SW-40	6	79735	Compressor for SW-40	22	79700	Sensor Cap for SW-40	38
68803	Button for SW-40	7	79691	Water Tray for SW-40	23	79752	Top Ventilation Board for SW-40	39
79674	Control Box for SW-40	8	79737	Compressor Support Plate for SW-40	24	79701	8025 Fan-2 for SW-40	40
79675	Display PCB for SW-40	9	79692	Hidden Line Box for SW-40	25	79754	Up Cover (Mid.Board) for SW-40	41
79676	Fixation Electrical Box (Up) for SW-40	10	79701	8025 Fan-2 for SW-40	26	79755	Bottom Cover (Mid.Board) for SW-40	42
68804	Light Cover for SW-40	11	79694	Power Supply Cord for SW-40	27	79710	Control Panel Sticker for SW-40	43
79725	LED Light for SW-40	12	79689	Electric Board for SW-40	28	79677	Control Box PVC for SW-40	44
68805	Bottom Light Box for SW-40	13	79742	Condenser for SW-40	29	79708	Fixation Electrical Box (Down) for SW-40	45
79677	Sealing for SW-40	14	79743	Bottom Reinforcing Bar for SW-40	30	79759	Bottom Wood Shelf for SW-40	46
79728	Fan-1 for SW-40	15	79696	Foot for SW-40	31	79760	Carton for SW-40	47
79729	Back Ventilation Board for SW-40	16	79745	Down Hinge for SW-40	32			

Parts Breakdown

Model WC-CN-0051-S 45261



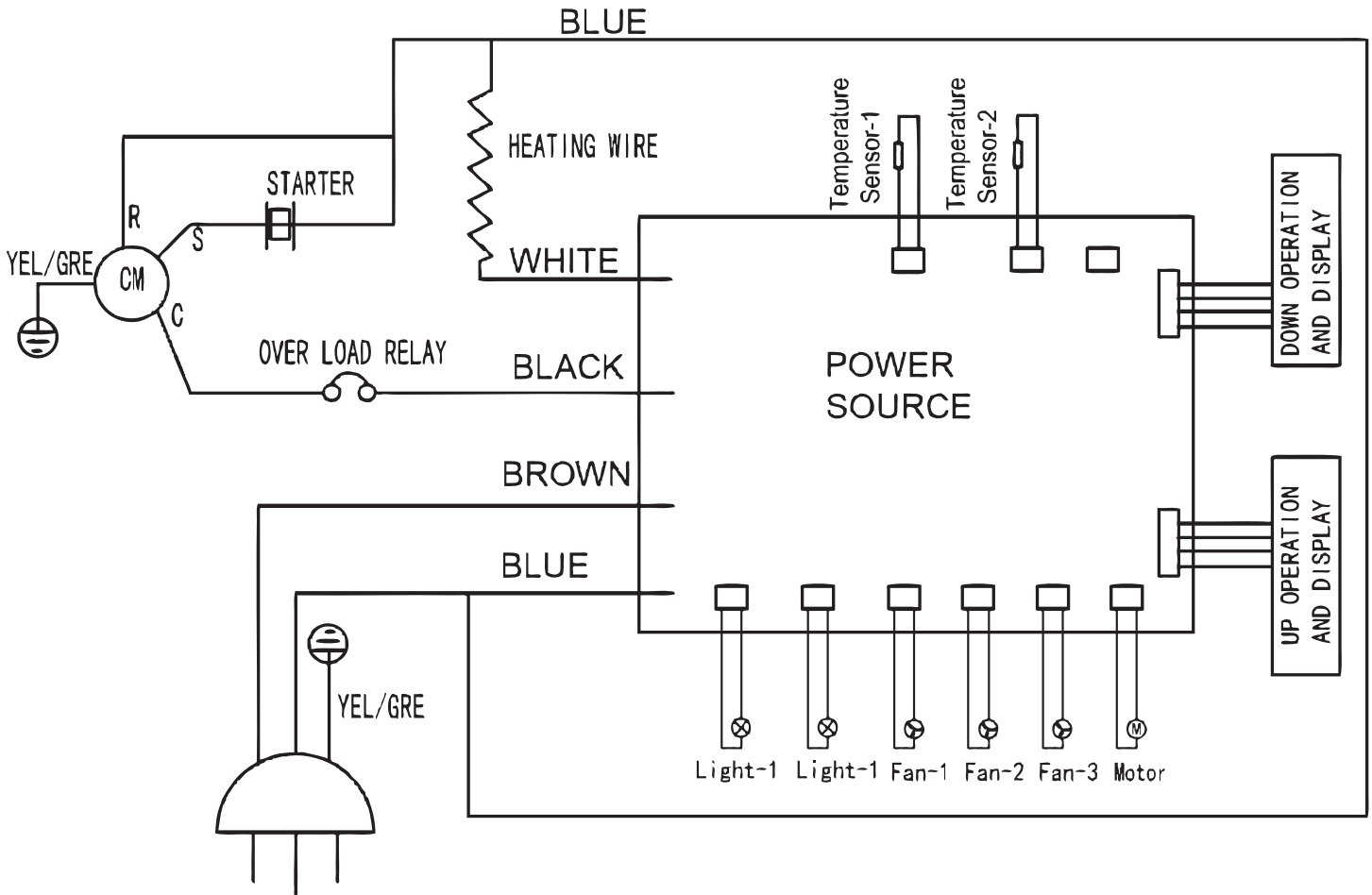
Parts Breakdown

Model WC-CN-0051-S 45261

Item No.	Description	Position	Item No.	Description	Position	Item No.	Description	Position
79714	Handle for SW-51	1	79728	Fan-1 for SW-51	15	79742	Condenser for SW-51	29
79715	Door Assemble for SW-51	2	79729	Back Ventilation Board for SW-51	16	79743	Bottom Reinforcing Bar for SW-51	30
79712	Shaft Sleeve for SW-51	3	79730	Up-Sensor for SW-51	17	79696	Foot for SW-51	31
79717	Door Gasket for SW-51	4	79731	Evaporator for SW-51	18	79745	Down Hinge for SW-51	32
79718	Upper Wood Shelf for SW-51	5	79732	Sealing PVC for SW-51	19	79711	Watershed Plate for SW-51	33
79719	Sliding Trace for SW-51	6	79686	Upper Hinge for SW-51	20	79698	Heating PTC for SW-51	34
68803	Button for SW-51	7	79734	Casing for SW-51	21	79748	Head Board for SW-51	35
79674	Control Box for SW-51	8	79735	Compressor for SW-51	22	79701	8025 Fan-1 for SW-51	36
79675	Display PCB for SW-51	9	79691	Water Tray for SW-51	23	79700	Sensor Cap for SW-51	37
79676	Fixation Electrical Box (Up) for SW-51	10	79737	Compressor Support Plate for SW-51	24	79752	Top Ventilation Board for SW-51	38
68804	Light Cover for SW-51	11	79692	Hidden Line Box for SW-51	25	79677	Control Box PVC for SW-51	39
79725	LED Light for SW-51	12	79701	8025 Fan-2 for SW-51	26	79710	Control Panel Sticker for SW-51	40
68805	Bottom Light Box for SW-51	13	79694	Power Supply Cord for SW-51	27	79759	Bottom Wood Shelf for SW-51	41
79677	Sealing for SW-51	14	79689	Electric Board for SW-51	28	79760	Carton for SW-51	42

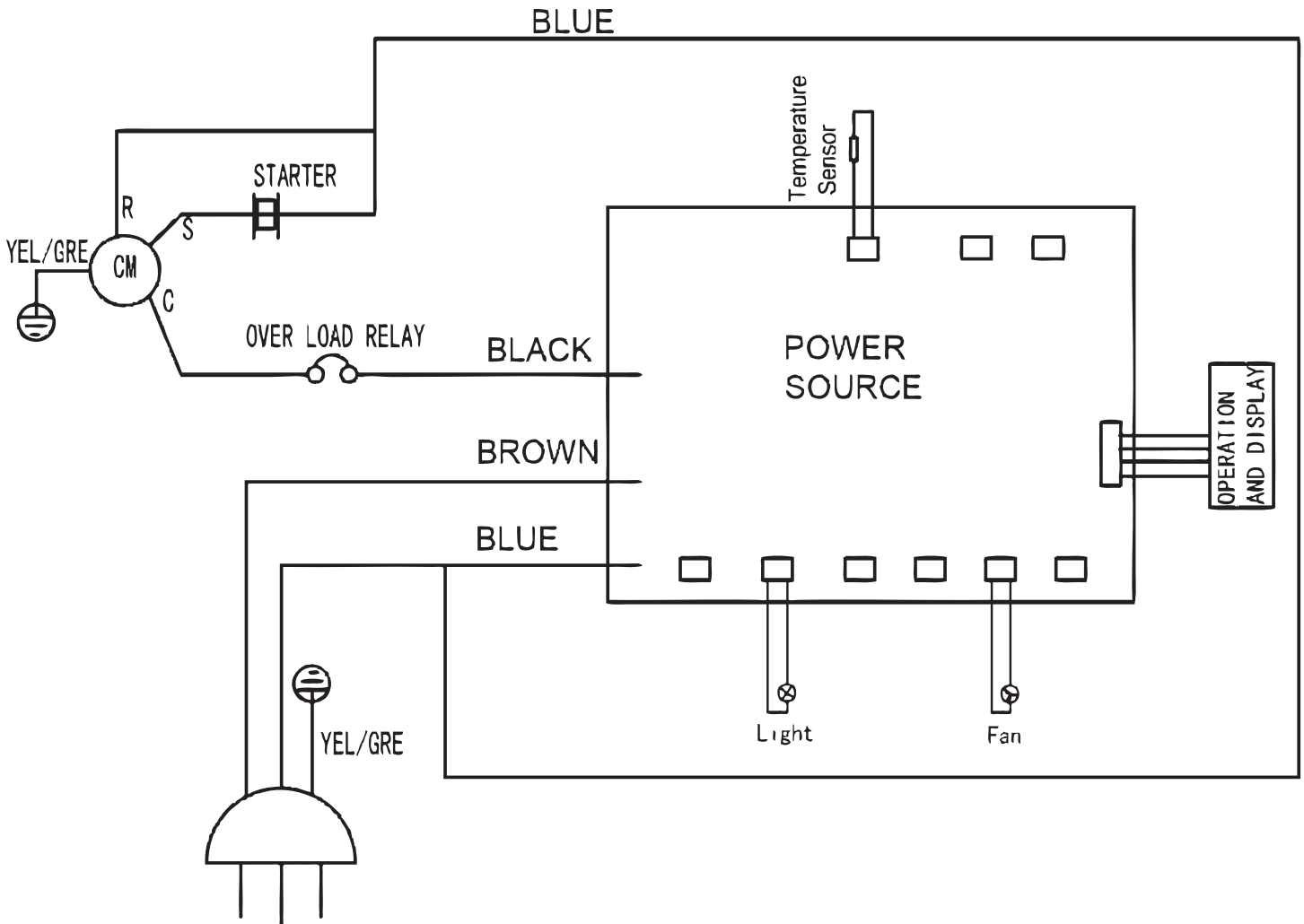
Electrical Schematics

Model WC-CN-0181-D 45258



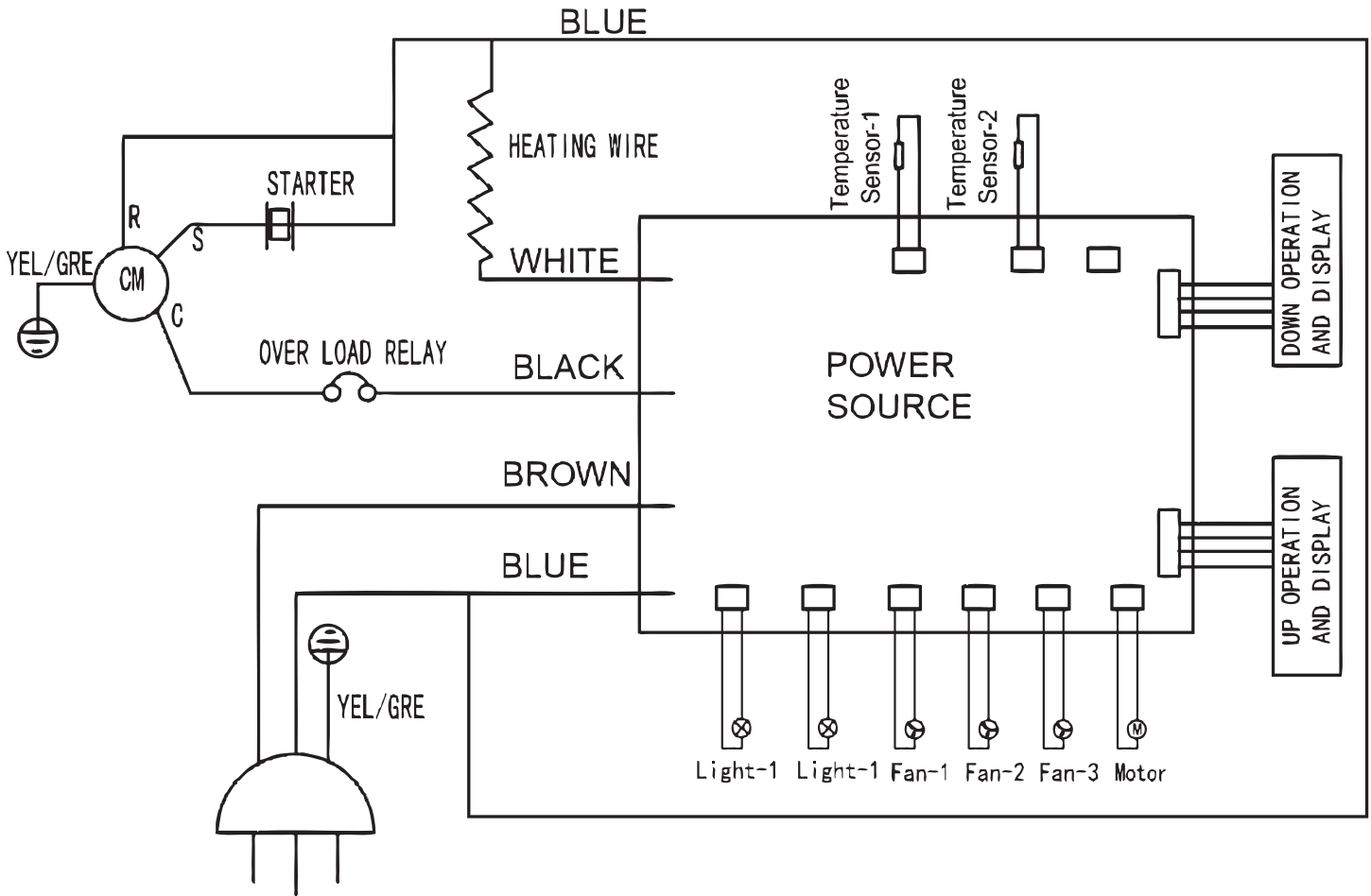
Electrical Schematics

Model WC-CN-0192-S 45259



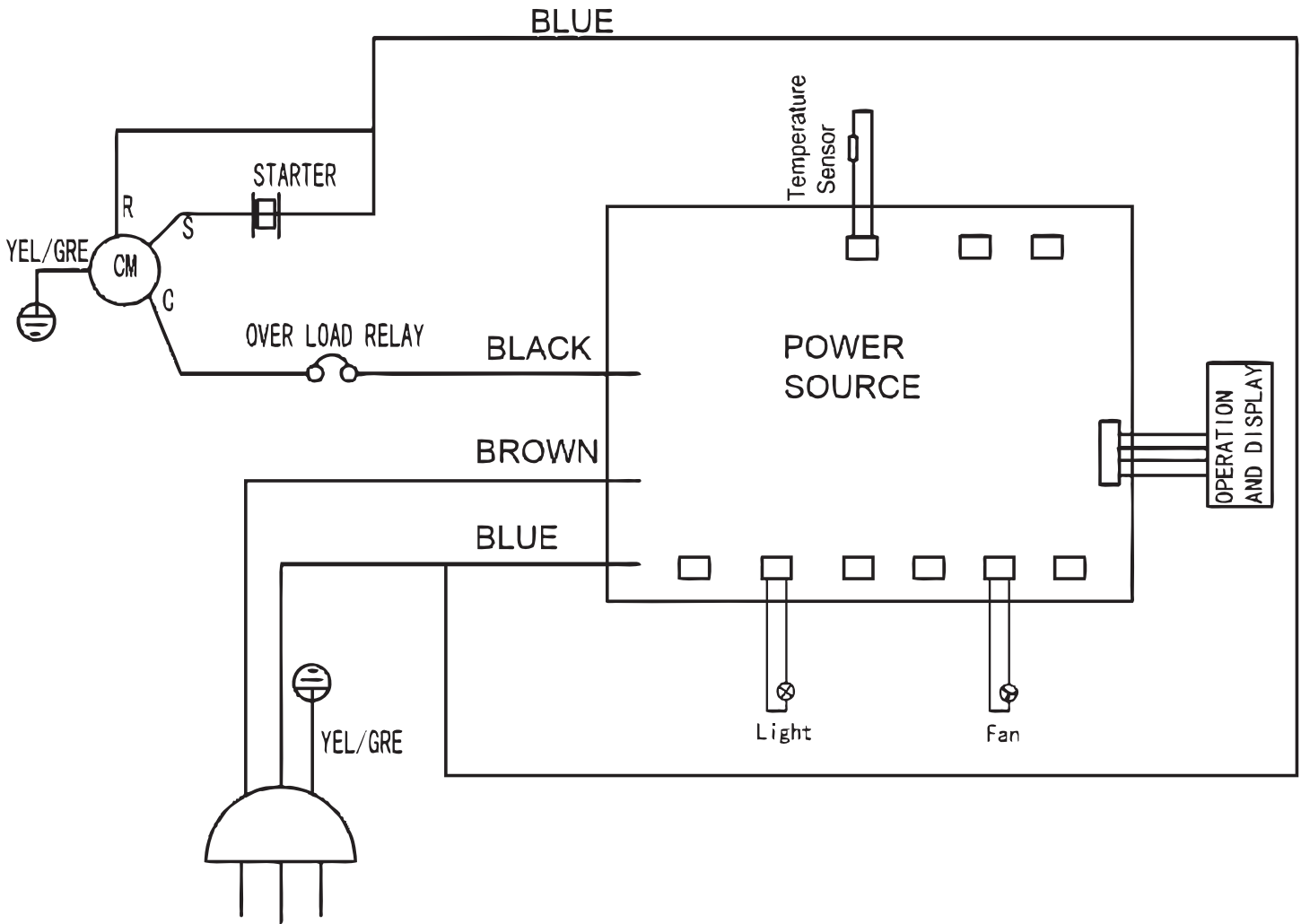
Electrical Schematics

Model WC-CN-0040-D 45260



Electrical Schematics

Model WC-CN-0051-S 45261



Notes



Warranty Registration

Thank you for purchasing an Omcan product. To register your warranty for this product, complete the information below, tear off the card at the perforation and then send to the address specified below. You can also register online by visiting:

Merci d'avoir acheté un produit Omcan. Pour enregistrer votre garantie pour ce produit, complétez les informations ci-dessous, détachez la carte au niveau de la perforation, puis l'envoyer à l'adresse spécifiée ci-dessous. Vous pouvez également vous inscrire en ligne en visitant:

Gracias por comprar un producto Omcan usted. Para registrar su garantía para este producto, complete la información a continuación, cortar la tarjeta en la perforación y luego enviarlo a la dirección indicada a continuación. También puede registrarse en línea en:

<https://omcan.com/warranty-registration/>

For mailing in Canada

Pour postale au Canada

Por correo en Canadá

OMCAN

PRODUCT WARRANTY REGISTRATION

3115 Pepper Mill Court,

Mississauga, Ontario

Canada, L5L 4X5

For mailing in the US

Pour diffusion aux États-Unis

Por correo en los EE.UU.

OMCAN

PRODUCT WARRANTY REGISTRATION

4450 Witmer Industrial Estates, Unit 4,

Niagara Falls, New York

USA, 14305

or email to: service@omcan.com



Purchaser's Information

Name: _____

Address: _____

City: _____ Province or State: _____ Postal or Zip: _____

Country: _____

Dealer from which Purchased: _____

Dealer City: _____ Dealer Province or State: _____

Invoice: _____

Model Name: _____ Model Number: _____

Machine Description: _____

Date of Purchase (MM/DD/YYYY): _____

Would you like to extend the warranty? Yes No

Company Name: _____

Telephone: _____

Email Address: _____

Type of Company:

Restaurant Bakery Deli

Butcher Supermarket Caterer

Institution (*specify*): _____

Other (*specify*): _____

Serial Number: _____

Date of Installation (MM/DD/YYYY): _____

Thank you for choosing Omcan | Merci d'avoir choisi Omcan | Gracias por elegir Omcan



Since 1951 Omcan has grown to become a leading distributor of equipment and supplies to the North American food service industry. Our success over these many years can be attributed to our commitment to strengthen and develop new and existing relationships with our valued customers and manufacturers. Today with partners in North America, Europe, Asia and South America, we continually work to improve and grow the company. We strive to offer customers exceptional value through our qualified local sales and service representatives who provide convenient access to over 5,000 globally sourced products.

Depuis 1951 Omcan a grandi pour devenir un des “leaders” de la distribution des équipements et matériel pour l’industrie des services alimentaires en Amérique du Nord. Notre succès au cours de ces nombreuses années peut être attribué à notre engagement à renforcer et à développer de nouvelles et existantes relations avec nos clients et les fabricants de valeur. Aujourd’hui avec des partenaires en Amérique du Nord, Europe, Asie et Amérique du Sud, nous travaillons continuellement à améliorer et développer l’entreprise. Nous nous efforçons d’offrir à nos clients une valeur exceptionnelle grâce à nos ventes locales qualifiées et des représentants de service qui offrent un accès facile à plus de 5000 produits provenant du monde entier.

Desde 1951 Omcan ha crecido hasta convertirse en un líder en la distribución de equipos y suministros de alimentos en América del Norte industria de servicios. Nuestro éxito en estos años se puede atribuir a nuestro compromiso de fortalecer y desarrollar nuevas relaciones existentes con nuestros valiosos clientes y fabricantes. Hoy con socios de América del Norte, Europa, Asia y América del Sur, que trabajan continuamente para mejorar y crecer la empresa. Nos esforzamos por ofrecer a nuestros clientes valor excepcional a través de nuestro local de ventas y representantes de los servicios que proporcionan un fácil acceso a más de 5,000 productos con origen a nivel mundial.

